



Grandstream Networks, Inc.

GXV3175 IP Multimedia Phone

GUI Customization Guide



TABLE OF CONTENTS
GXV3175 GUI CUSTOMIZATION GUIDE

INTRODUCTION.....	1
OVERVIEW	1
HOW TO CUSTOMIZE GXV3175 LCD GUI.....	1
CONFIGURATION GUIDE.....	2
CONFIG SETTING	2
APP SETTING	3
<i>Add a GMI Application</i>	4
SYSTEM SETTING.....	6
PHONEBOOK SETTING	7
LAYOUT SETTING	8
SCREEN SETTING	9
ACCOUNT SETTING.....	10
SCREEN SAVER SETTING	11
MAINTENANCE SETTING	12

TABLE OF FIGURES
GXV3175 GUI CUSTOMIZATION GUIDE

Figure 1: Config Setting Interface	2
Figure 2: App Setting Interface	3
Figure 3: App Setting → Add a GMI Application	4
Figure 4: App Setting → GMI Application Example.....	5
Figure 5: System Setting Interface.....	6
Figure 6: Phonebook Setting Interface	7
Figure 7: Layout Setting Interface.....	8
Figure 8: Screen Setting Interface	9
Figure 9: Account Setting Interface.....	10
Figure 10: Screen Saver Setting Interface.....	11
Figure 11: Maintenance Setting Interface	12

INTRODUCTION

OVERVIEW

Grandstream GXV3175 IP Multimedia Phone allows users to customize the GUI desktop layout as well as GUI configurations on the phone, offering users with flexibility and control. The GUI configuration includes display/hide certain applications, configure parameters on the phone with specific configuration items, control the display appearance and enable/disable some applications and much more.

This document describes how to use the Grandstream Graphical GUI Customization Tool to customize the GXV3175 GUI settings and applications. This tool allows users to do the following on applications running on GXV3175:

- Turn on/off applications
- Set up parameters
- Personalize phone display
- Turn on/off certain functions on applications

The Grandstream GXV31xx Graphical GUI Customization Tool is available for download from the following link: [GXV31xx GUI Customization Tool](#) .

HOW TO CUSTOMIZE GXV3175 LCD GUI

1. Unzip the tool package. Double click on “Grandstream VoIP Phone Config Tool.exe” to start up the tool. Single click on GXV3175 picture to get into the GXV3175 GUI customization interface.
2. Set up the parameters and application configurations.
3. Generate the GXV3175 custom file “gxv3170cust” by clicking on “File → Save As”. The tool also allows users to read and edit the existing custom files.
4. Put the generated custom file “gxv3170cust” on your HTTP/TFTP/HTTPS server.
5. Point the phone's firmware upgrade path to the directory on the server where the custom file locates.
6. Reboot the phone to trigger the upgrade.
7. After booting up, GXV3175 LCD shall display the customized GUI.

CONFIGURATION GUIDE

CONFIG SETTING

The following figure shows the "Config Setting" section on the GUI Config Tool. Users could enable or disable the specific configuration setting here for the GXV3175. Basically, it allows users to select the settings to be used on the phone.

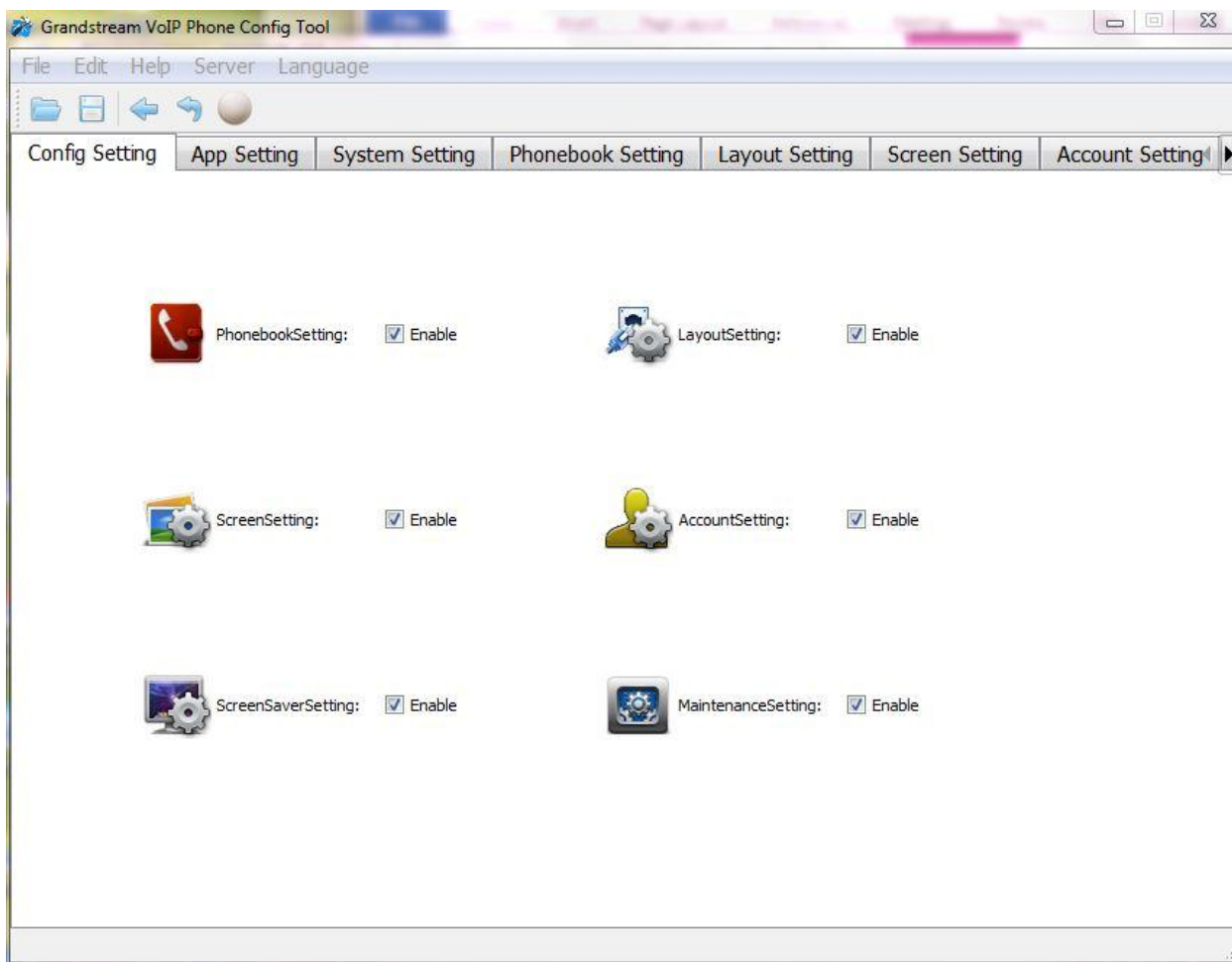


Figure 1: Config Setting Interface

APP SETTING

The following figure shows the "App Setting" section on the Config Tool.

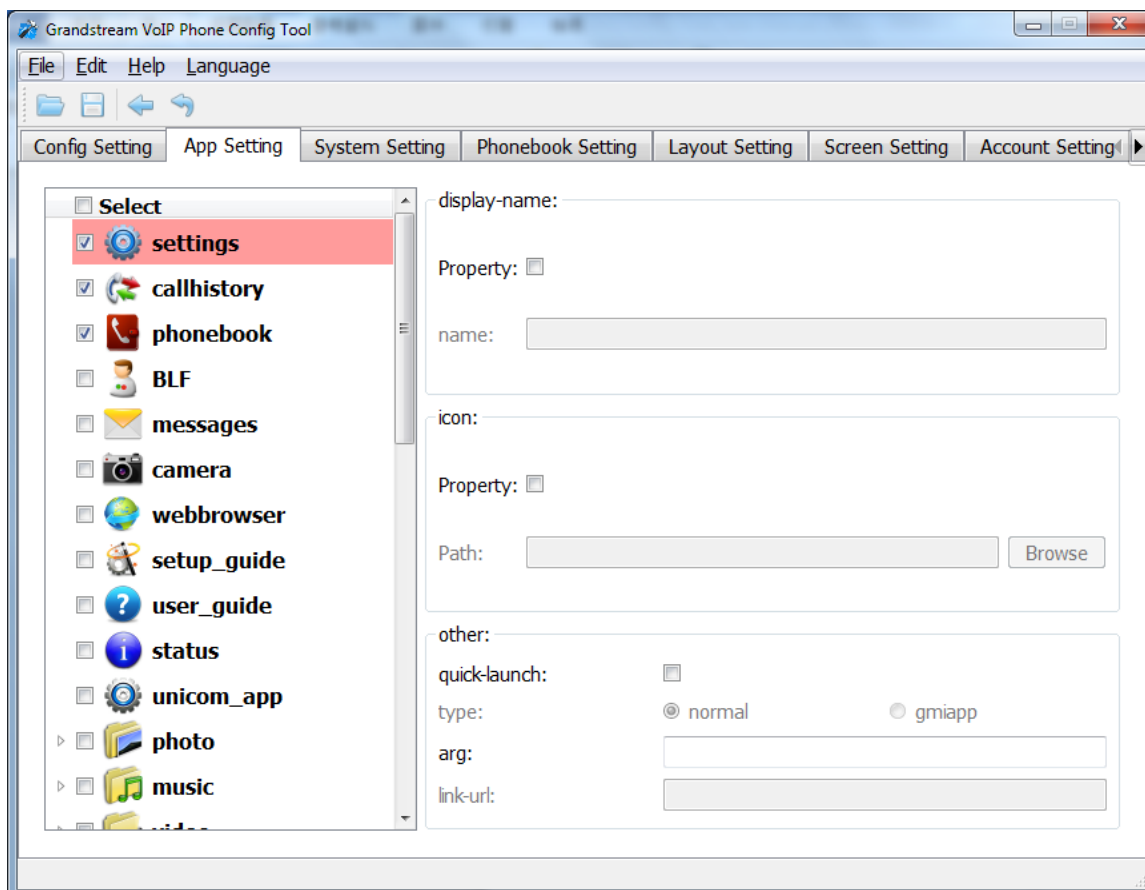


Figure 2: App Setting Interface

In this section, users could configure the following:

- Edit menu layout structure
- Enable or disable specific application
- Edit options to be displayed on GUI interface for a specific application, which includes icon and text for description purpose. (Default settings will be applied if there is no change made)
- Add submenu or link by right-clicking on the left panel list

Note:

On the left panel list, "Settings", "Callhistory" and "Phonebook" are mandatory.

Add a GMI Application

To add a GMI application, with the cursor located within the left panel, right-click the mouse, a drop-down menu will appear, with two options “add submenu” and “add link”. Click on “add link”, a pop-up window “AddLink” will be shown like the following. Browse and select an “Icon”, enter a “Display Name”, and click on “Add”.

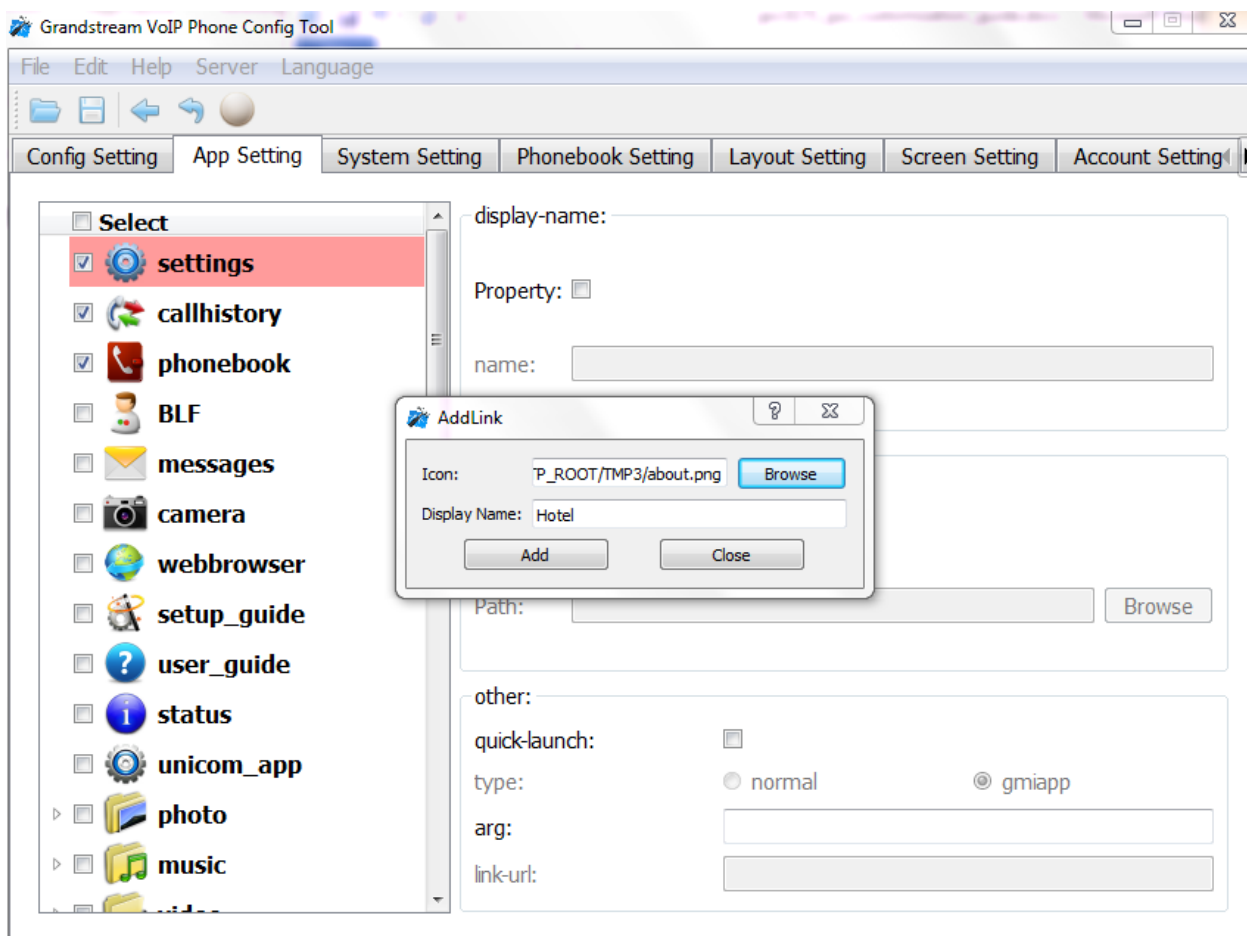


Figure 3: App Setting → Add a GMI Application

A Hotel application with the icon and display name shows up in the left panel. On the right panel, display-name and icon are filled with the information entered previously. Under “other”, users have the choice to check “quick-launch” or not. For “type”, please select “gmiapp”. For “link-url”, users can enter <file:///sda1/Hotel/index.html> for a local application. If it is a remote GMI application, users need to enter a HTTP URL like <http://www.ipvideotalk.com/V2>. For more details on the GXV3175 GMI Configuration, please refer to:

[GXV3175 GMI Guide](#)

[GXV3175 GMI Example 1](#)

[GXV3175 GMI Example 2](#)

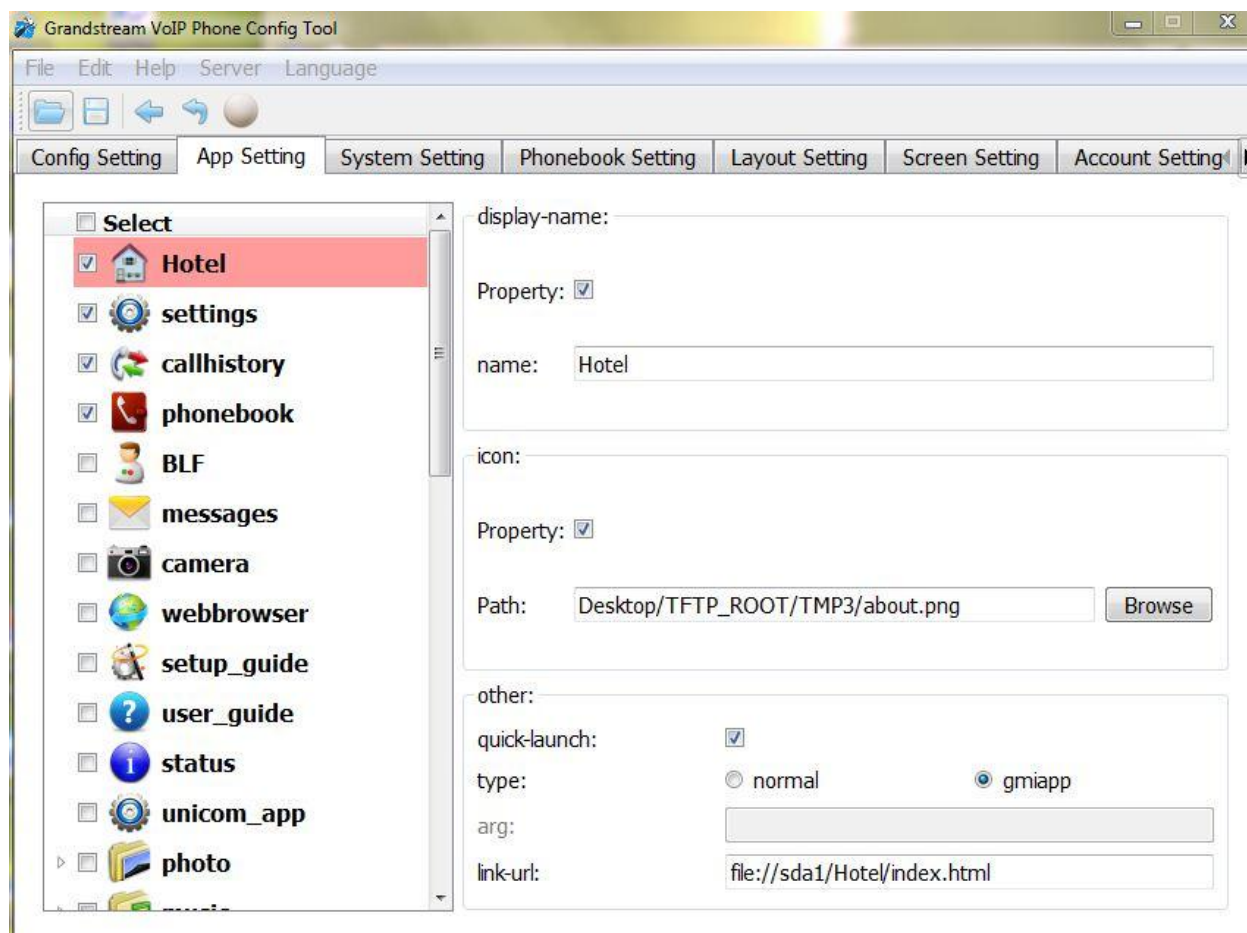


Figure 4: App Setting → GMI Application Example

SYSTEM SETTING

The following figure shows the "System Setting" section on the Config Tool. By clicking on the checkbox for each item, users could enable or disable the corresponding setting under GXV3175 "System Setting" menu.

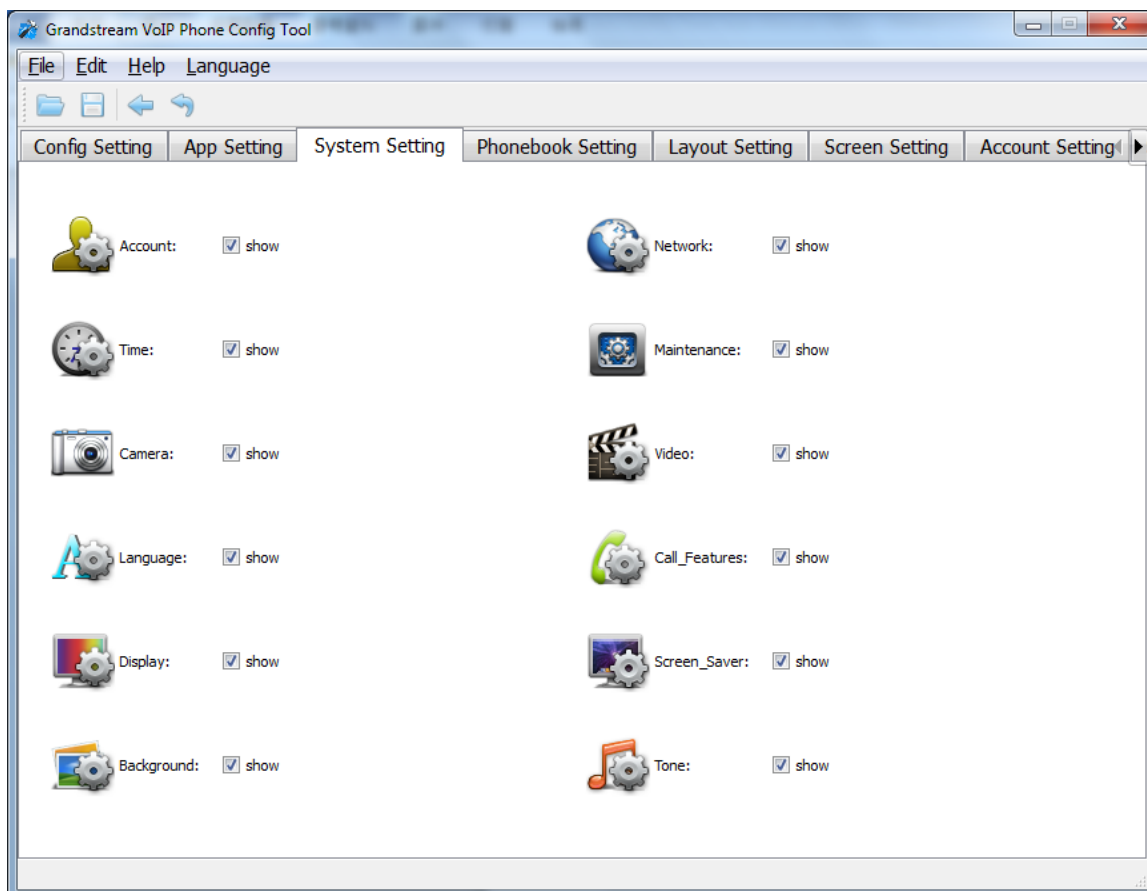


Figure 5: System Setting Interface

PHONEBOOK SETTING

The following figure shows the "Phonebook Setting" section on the Config Tool. As can be seen, in this section, parameters for phonebook download (Mode, URL and etc), import or export can be set up for the GXV3175.

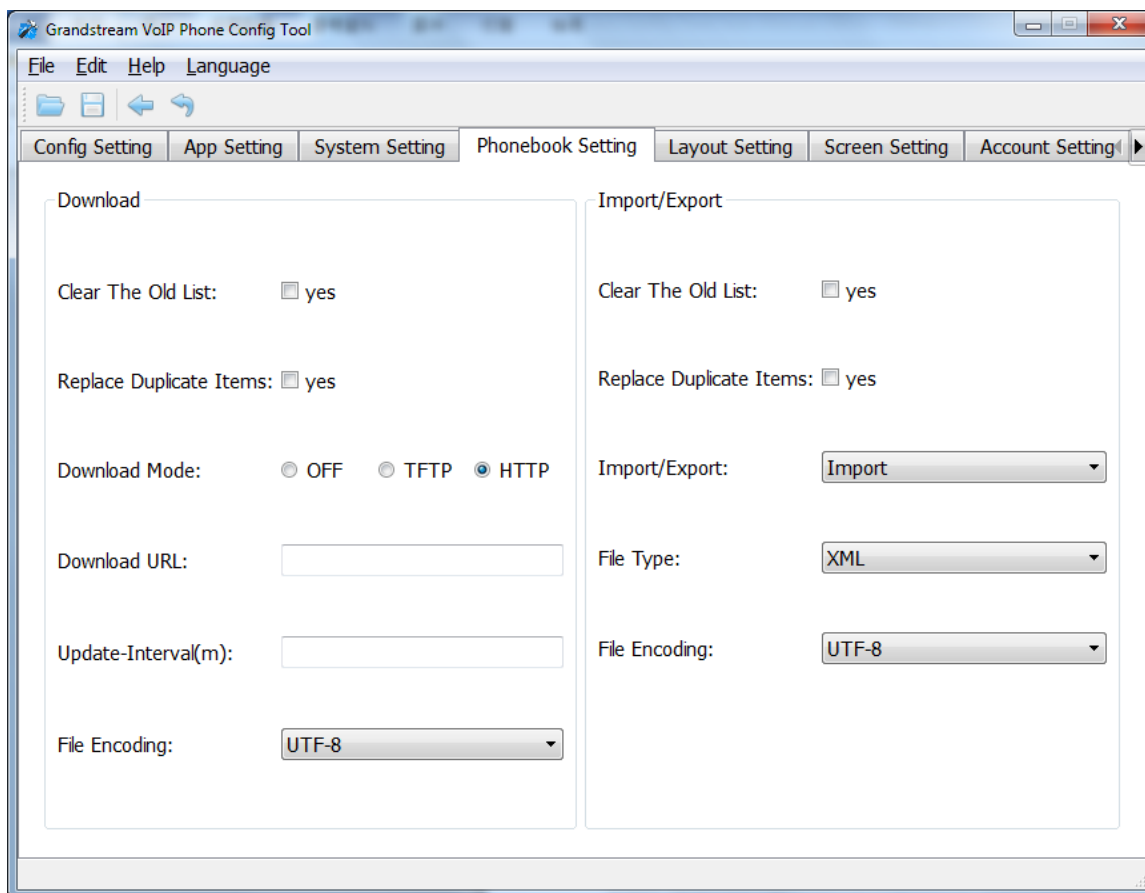


Figure 6: Phonebook Setting Interface

LAYOUT SETTING

The following figure shows the "Layout Setting" section on the Config Tool. Users could customize the following for the GXV3175 desktop layout:

- Directly drag and place the application icons in the bottom list to the desktop as widgets
- Define and tune the x, y coordinates after placing the widgets
- Right-click on the widgets to remove it from the desktop

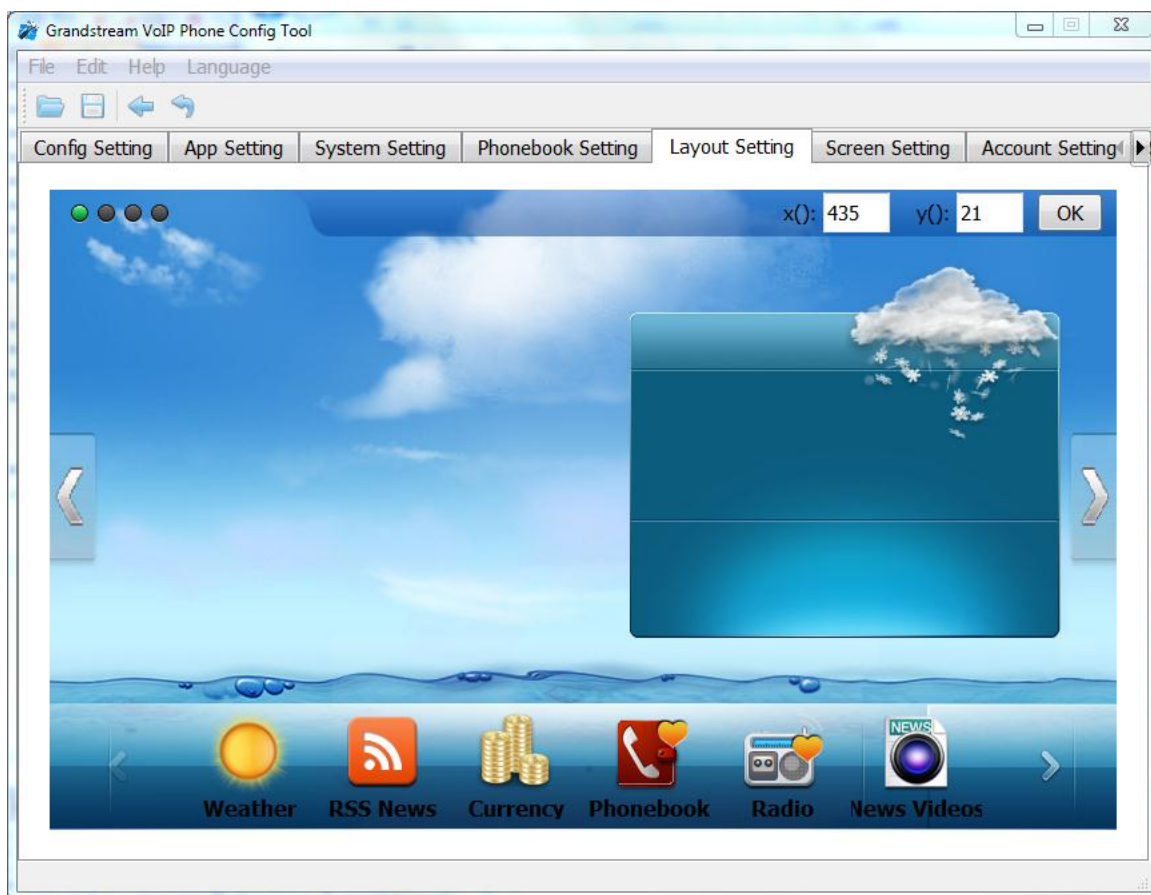


Figure 7: Layout Setting Interface

SCREEN SETTING

The following figure shows the "Screen Setting" section on the Config Tool. Users could customize the background image on the four idle screens for GXV3175.

- Click Up or Down to select the image for each screen
- Click on Choose to import images from local directory

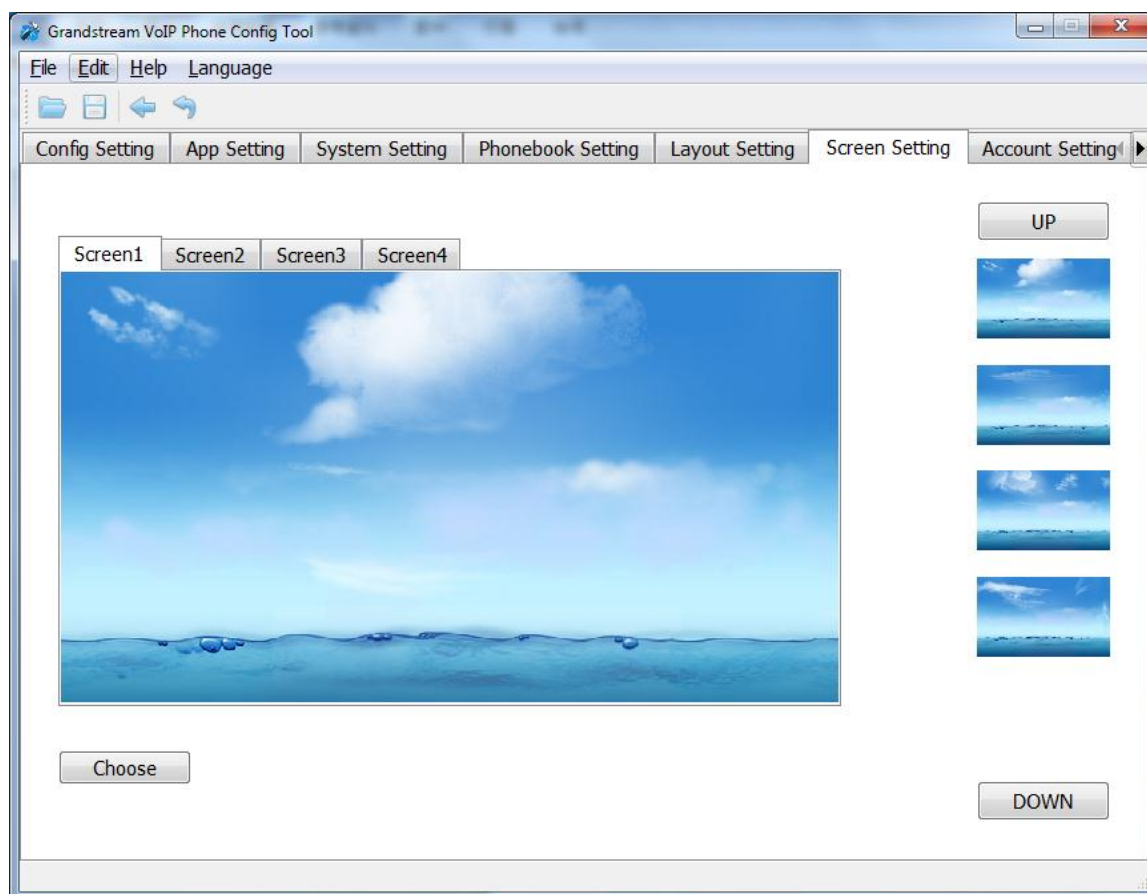


Figure 8: Screen Setting Interface

ACCOUNT SETTING

The following figure shows the "Account Setting" section on the Config Tool. Users could enter the account information here to register the account on GXV3175.

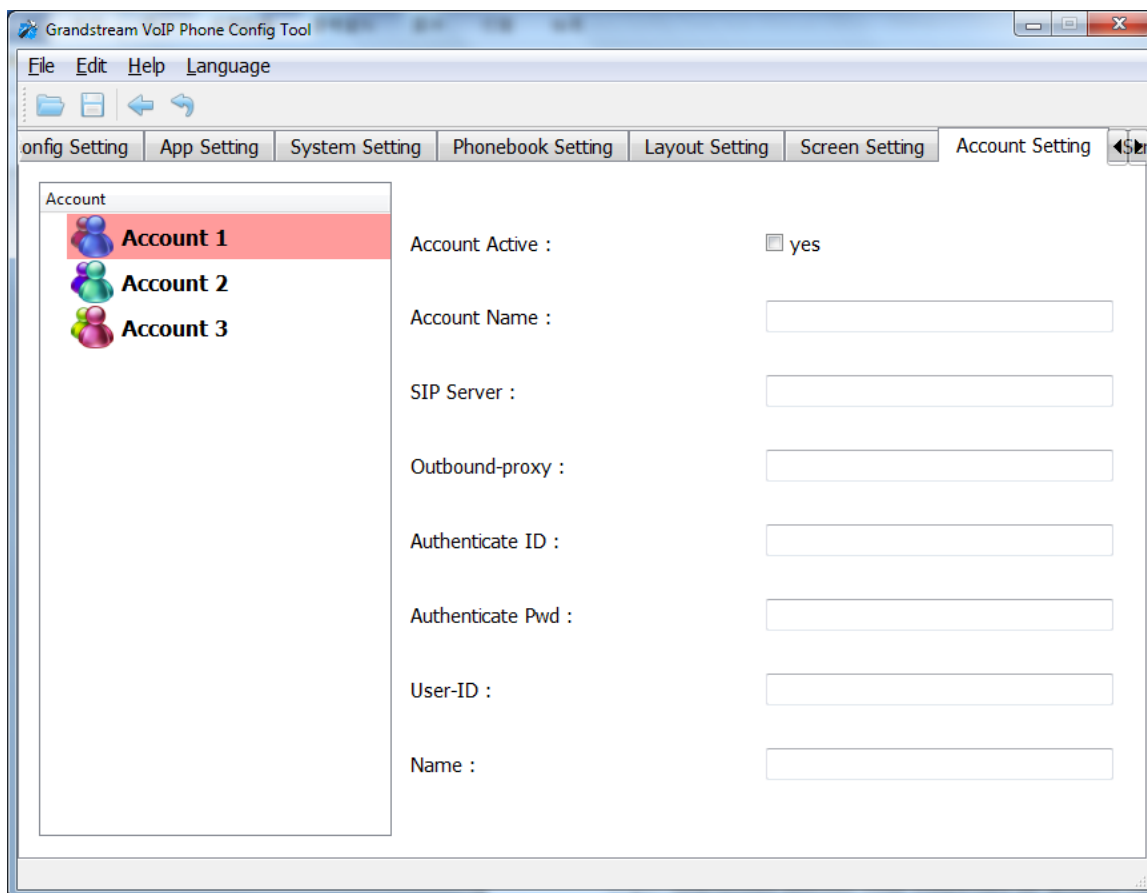


Figure 9: Account Setting Interface

SCREEN SAVER SETTING

The following figure shows the "Screen Saver Setting" section on the Config Tool.

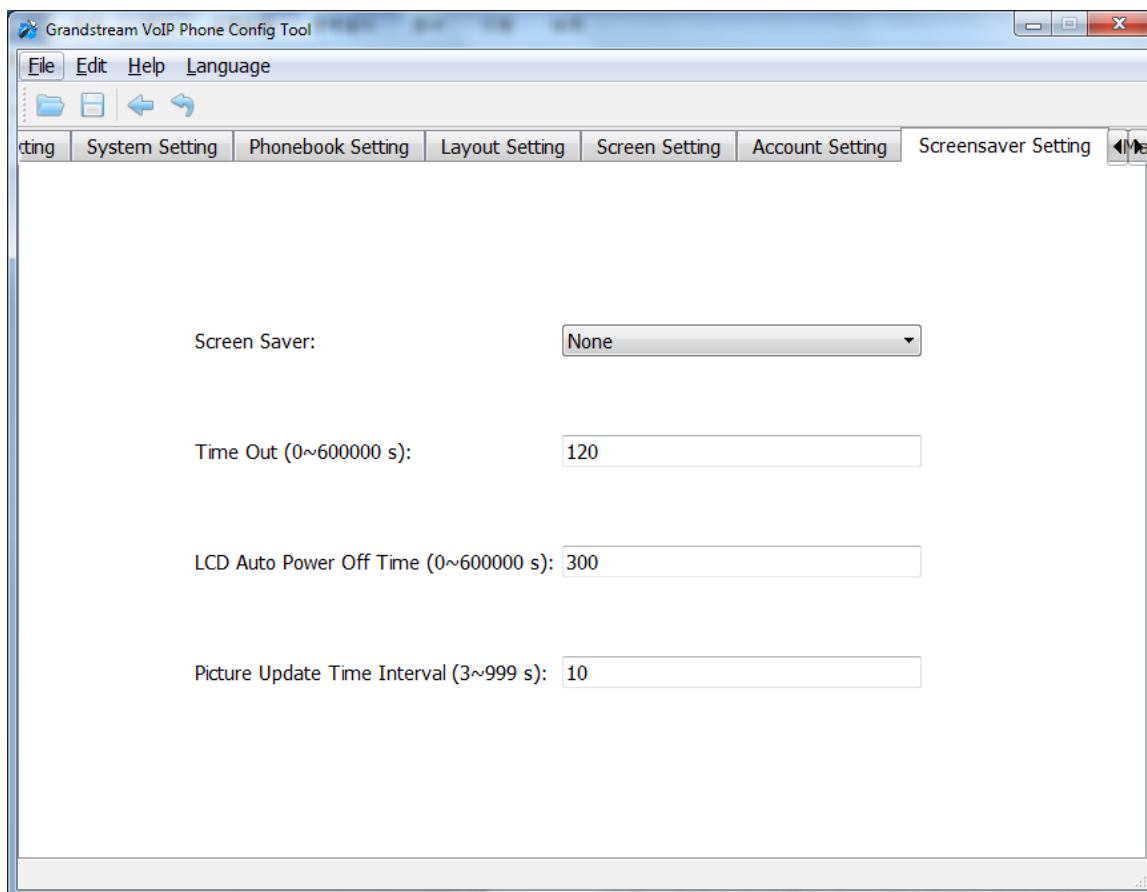


Figure 10: Screen Saver Setting Interface

MAINTENANCE SETTING

The following figure shows the "Maintenance Setting" section on the Config Tool. Users could select display languages, upgrade server, server URL and upload user data cycle here.

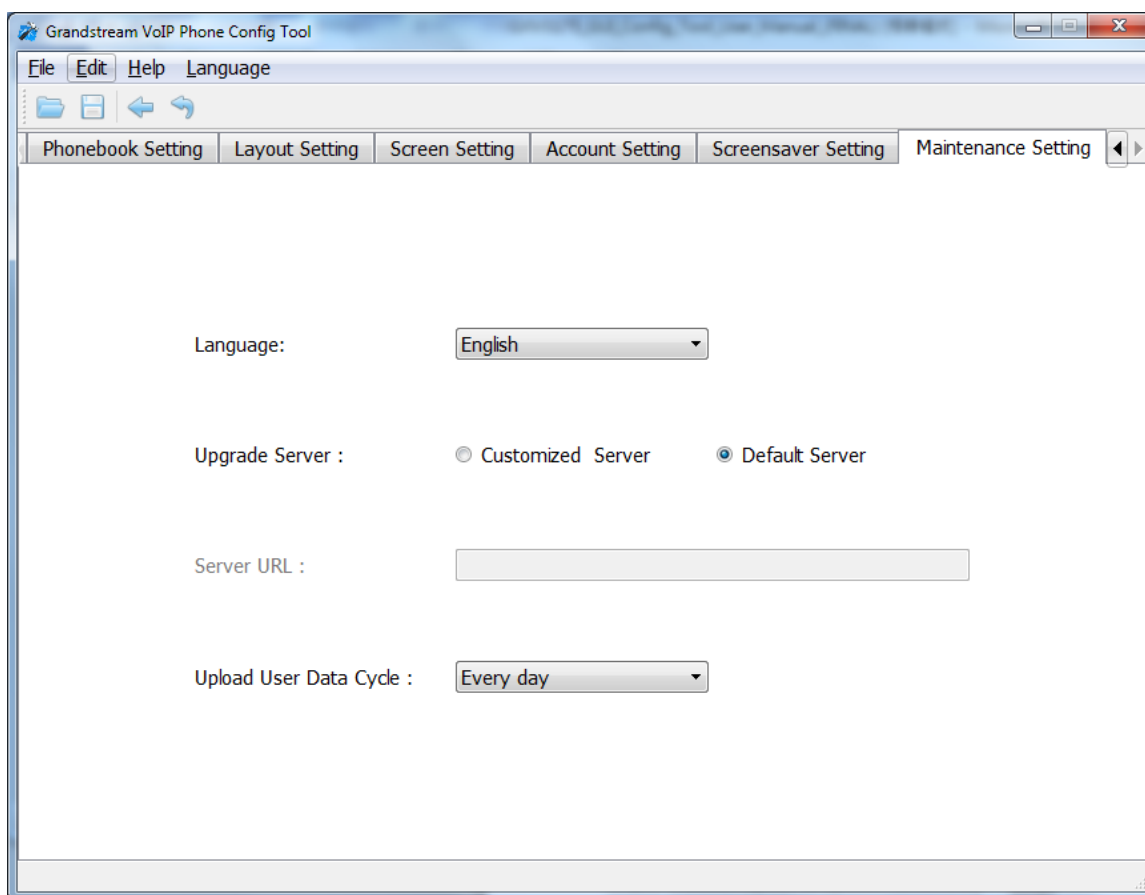


Figure 11: Maintenance Setting Interface