



GRANDSTREAM
CONNECTING THE WORLD

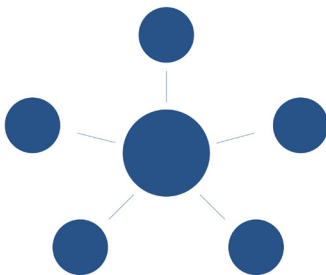


GWN.Cloud

Cloud Controller for Grandstream's GWN series

GWN.Cloud is a free enterprise-grade, management platform for Grandstream GWN series devices. Thanks to streamlined monitoring and maintenance, managing your network across multiple locations has never been easier. Secure networks can be deployed in seconds, then later managed from the same interface. Keep an eye on the network's performance with real-time monitoring, alerts, statistics and reports that can be viewed using a web browser or the mobile application.

Centralized Network Management



GWN.Cloud offers a centralized Wi-Fi network management platform for an entire enterprise, not just a single site.

- Complete scalability
- No limits on number of sites or APs
- Access from anywhere via web or mobile app
- Full network monitoring and reporting

Enterprise-Ready

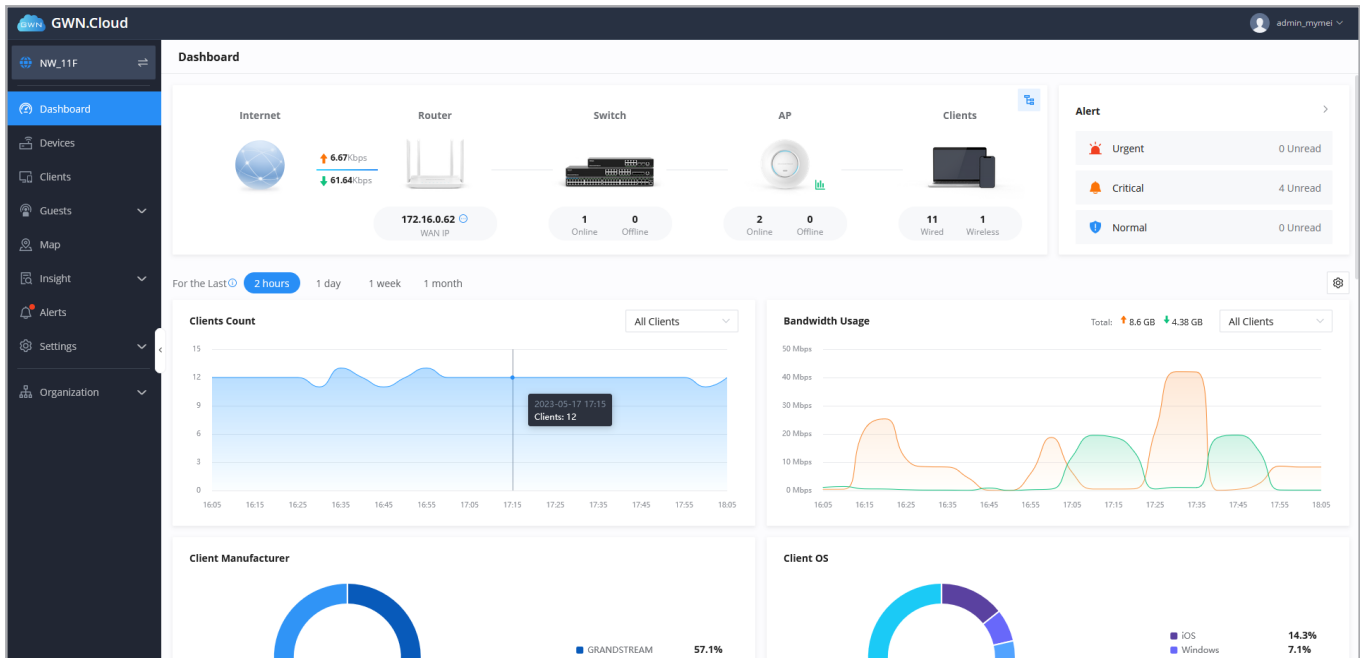


GWN.Cloud is built to handle the requirements of major enterprises, making it a robust option for SMBs as well.

- Hosted by Amazon Web Services (AWS)
- Bank-grade TLS encryption from end-to-end
- X.509 certificate-based authentication
- Resiliency from cloud disruptions

Real Time Monitoring and Reporting

See an overview of all networks through the web user interface or mobile app



Network Alerts

View network, device, client anomalies by alert

The screenshot displays the GWN.Cloud Alerts page. The interface includes a sidebar with navigation options: Dashboard, Devices, Clients, Guests, Map, Insight, Alerts, Settings, and Organization. The main alerts section shows a list of alerts with columns: Alert Detail, Alert Type, Level, and Alert Time. The alerts are filtered by 'All Types' and 'All Levels'. The list contains 10 alerts, with the first 9 visible. The alerts are categorized by type (Security, Performance, Network) and level (Urgent, Normal).

Alert Detail	Alert Type	Level	Alert Time
<input type="checkbox"/> Device mymel-7630 (C0:74:AD:02:FE:8C) detected a rogue AP of Spoofing SSID (BSSID: C2:74:AD:BD:C9:BA, SSID: GSHZGWN-yyca, RSSI: -60)	Security	Urgent	2023-05-17 01:08PM
<input type="checkbox"/> Device mymel-7630 (C0:74:AD:02:FE:8C) detected a rogue AP of Spoofing SSID (BSSID: C0:74:AD:CF:29:E5, SSID: GSHZGWN, RSSI: -64)	Security	Urgent	2023-05-17 01:08PM
<input type="checkbox"/> Device mymel-7630 (C0:74:AD:02:FE:8C) detected a rogue AP of Illegal access (BSSID: 00:0B:82:AF:D1:A9, SSID: GWNADF1A8, RSSI: -27)	Security	Urgent	2023-05-17 01:08PM
<input type="checkbox"/> AP mymel-7630 (C0:74:AD:02:FE:8C) 5GHz RF real-time channel usage exceeded 60%	Performance	Normal	2023-05-17 01:06PM
<input type="checkbox"/> AP mymel-7630 (C0:74:AD:02:FE:8C) 5G channel automatically switched from 161 to 36	Network	Normal	2023-05-17 01:05PM
<input type="checkbox"/> Router mymel_router (C0:74:AD:7C:74:94) 5GHz RF real-time channel usage exceeded 70%	Performance	Normal	2023-05-17 01:04PM
<input type="checkbox"/> AP mymel-7630 (C0:74:AD:02:FE:8C) 2.4GHz RF real-time channel usage exceeded 83%	Performance	Normal	2023-05-17 01:04PM
<input type="checkbox"/> Router mymel_router (C0:74:AD:7C:74:94) 2.4GHz RF real-time channel usage exceeded 64%	Performance	Normal	2023-05-17 01:03PM
<input type="checkbox"/> Device mymel-7630 (C0:74:AD:02:FE:8C) detected a rogue AP of Spoofing SSID (BSSID: C2:74:AD:BD:C9:BA, SSID: GSHZGWN-yyca, RSSI: -59)	Security	Urgent	2023-05-17 01:03PM
<input type="checkbox"/> Device mymel-7630 (C0:74:AD:02:FE:8C) detected a rogue AP of Illegal access (BSSID: 00:0B:82:AF:D1:A9, SSID: GWNADF1A8, RSSI: -29)	Security	Urgent	2023-05-17 01:03PM

Mobile Application

Manage the network-based devices at anytime from anywhere using Android and iOS with the free GWN app. This app links seamlessly with devices registered in GWN.Cloud or GWN Manager, and allows users to monitor and manage the network established by GWN devices. The GWN app extends web features to allow you to manage the network and be productive while on-the-go: monitor network/device/client status in different time periods, alert notification, add devices to the network via phone camera scanning, monitor device details and more. There is no purchase necessary to manage the network-based devices with the GWN app.



Specifications

Centralized Management

- Local data forwarding, no user traffic sent to the controller
- Bank-grade TLS encryption from end-to-end with X.509 certificate based authentication
- User and privilege management, support multi-factor safety authentication
- Mobile app for iOS and Android
- Network-based management and unified device configuration
- Network/device/client/guest monitoring
- Network topology to display the visual information of device and client

Access Security and Control

- Supports access policy configuration (blacklist, whitelist, time policy schedule)
- Multiple WLAN security type including open, personal, enterprise, ppsk, etc.
- Bandwidth rules for client access
- Supports firewall to control both wired and wireless client
- Rogue AP detection and alert

Reporting and Monitoring

- Real-time devices and client monitoring
- Detailed reports by network, device, client, etc
- Retrieval of historical data for statistical observations
- Customize monitoring pannel (add and remove chart, adjust the display order)

Supported Devices

- GWN Series Access Points: GWN7610, GWN7600(LR), GWN7630(LR), GWN7602, GWN7605(LR), GWN7615, GWN7660(LR), GWN7661, GWN7662, GWN7664(LR), GWN7624, GWN7625
- GWN Network Switches: GWN7801(P), GWN7802(P), GWN7803(P)
- GWN Routers: GWN7052(F), GWN7062

Enterprise Features

- Internet/LAN/Wi-Fi management
- Supports Wi-Fi Alliance Voice-Enterprise
- Support Mesh to extend wireless network
- Real-time Wi-Fi Scan for deployment
- URL access log collection
- Multiple Wi-Fi performance optimization methods including band- steering, Minimum RSSI, ARP Proxy, IP multicast to unicast, etc
- Multiple API for third-party application developing
- Presence API for pedestrian flow monitoring
- Supports Inventory to manage the unused device.
- Supports device, client and inventory export

Captive Portals

- Splash page with built-in WYSIWYG editor
- Facebook, Twitter, Google integration
- Multiple captive portal authentications including simple password, radius, custom field, email, sms etc.
- Voucher management, supports voucher download and print, support customize voucher logo and slogan
- External captive portal integration
- Real-time guest statistics and monitoring
- Advertisement integration with flexible strategies
- Export guest info into file and automatically send to email

Maintenance

- Real-time alerts with customize setting and notification
- Ping/traceroute/capture/ssh remote access
- Scheduled device firmware update and LED control
- Change log for audit trail
- Remote access to device Web depend on secure tunnel

Languages

- English, Chinese, French, German, Portuguese, Spanish, Vietnamese, Arabic, Danish, Finnish, Greek, Hebrew, Italian, Russian, Serbian, Ukrainian, Turkish, Slovakian, Czech, Polish