



GRANDSTREAM
CONNECTING THE WORLD

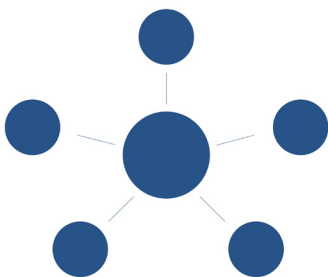


GWN Manager

On-Premise Software Controller for Grandstream's GWN series

GWN Manager is a free on-premise enterprise-grade, management platform for Grandstream GWN series devices. Typically deployed on a customer's private network, this flexible, scalable solution offers simplified configuration and management. Thanks to streamlined monitoring and maintenance, managing your network has never been easier. Keep an eye on the network's performance with real-time monitoring, alerts, statistics and reports that can be viewed using a web browser or the mobile application.

Centralized Network Management



GWN Manager offers a centralized network management platform for an entire enterprise, not just a single site.

- Complete scalability
- No software limits on number of sites or devices, but depend on your hardware specifications
- Full network monitoring and reporting

Enterprise-Ready

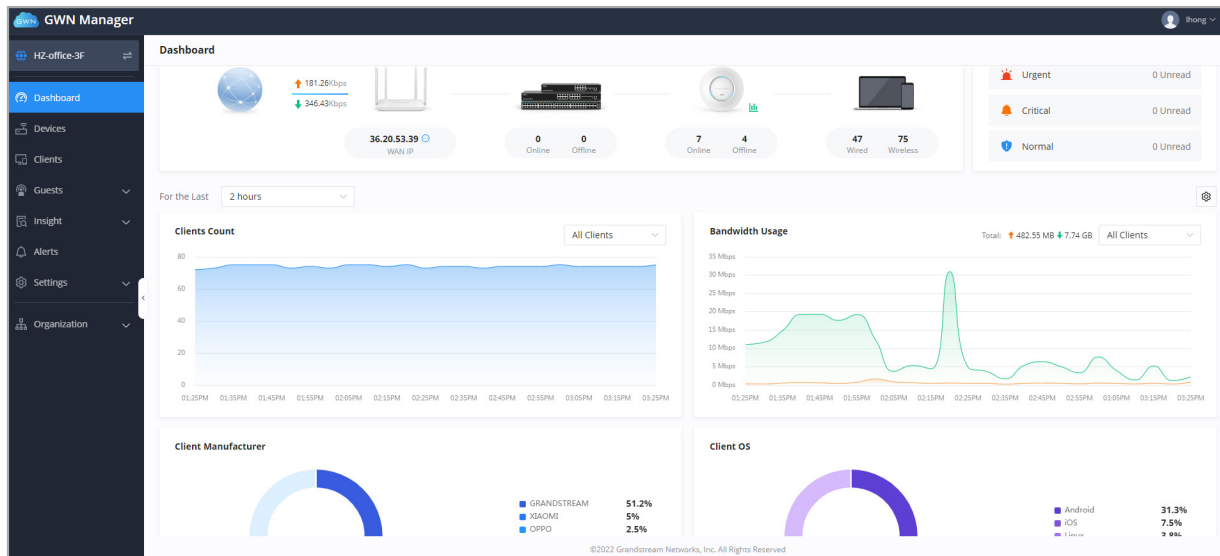


GWN Manager is built to handle the requirements of major enterprises, making it a robust option for SMBs as well.

- Bank-grade TLS encryption from end-to-end
- X.509 certificate-based authentication
- Detailed user data storage and backup

Real Time Monitoring and Reporting

See an overview of all networks through the web user interface or mobile app



Network Alerts

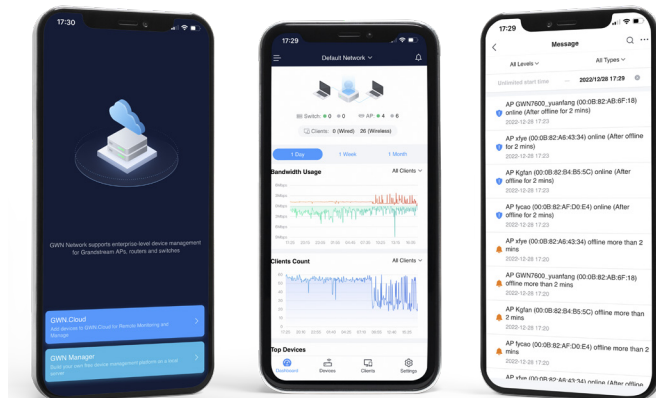
View network, device, client anomalies by alert

The screenshot shows the Alerts page in GWN Manager. It lists various network anomalies with columns for alert details, severity, and time. The alerts include throughput exceeding limits, memory usage exceeding 90%, and wireless connection failures.

Alert	Severity	Time
SSID (GSHZGWN) throughput exceeded 122Mbps	Normal	2022-12-26 03:36PM
AP test_ap1 (C0:74:AD:23:AE:C8) memory usage exceeded 90%	Critical	2022-12-26 03:36PM
AP test_ap1 (C0:74:AD:23:AE:C8) 2.4GHz RF real-time channel usage has returned to normal	Normal	2022-12-26 03:36PM
AP AP03 Design Department (C0:74:AD:62:C0:30) 2.4GHz RF real-time channel usage has returned to normal	Normal	2022-12-26 03:34PM
Router (C0:74:AD:7C:75:54) WAN port WAN1 throughput exceeded 53.24Mbps	Normal	2022-12-26 03:34PM
AP test_ap1 (C0:74:AD:23:AE:C8) memory usage has returned to normal	Critical	2022-12-26 03:34PM
Network (HZ-office-3F) throughput exceeded 111Mbps	Normal	2022-12-26 03:33PM
Client 9aa4977c2e62 (C0:74:AD:7C:75:54) wireless connection failed	Normal	2022-12-26 03:33PM
AP AP03 Design Department (C0:74:AD:62:C0:30) 2.4GHz RF real-time channel usage exceeded 61%	Normal	2022-12-26 03:32PM
AP AP05 一部室 ushichloul ap (C0:74:AD:62:C0:40) throughput exceeded 109Mbps	Normal	2022-12-26 03:31PM
SSID (GSHZGWN) throughput exceeded 108Mbps	Normal	2022-12-26 03:31PM
AP AP03 Design Department (C0:74:AD:62:C0:30) 2.4GHz RF real-time channel usage has returned to normal	Normal	2022-12-26 03:30PM
Client 829f8bac7f58 (C0:74:AD:7C:75:54) wireless connection failed	Normal	2022-12-26 03:29PM

Mobile Application

Manage the network-based devices at anytime from anywhere using Android and iOS with the free GWN app. This app links seamlessly with devices registered in GWN.Cloud or GWN Manager, and allows users to monitor and manage the network established by GWN devices. The GWN app extends web features to allow you to manage the network and be productive while on-the-go: monitor network/device/client status in different time periods, alert notification, add devices to the network via phone camera scanning, monitor device details and more. There is no purchase necessary to manage the network-based devices with the GWN app.



Specifications

Hardware requirements

For up to 200 Devices and 2000 Clients:

- CPU: Intel® Core™ i3-3240 or above
- RAM: 4GB or above
- Storage: 250GB (SSD preferred, depend on retained data size)

For up to 3000 Devices and 30000 Clients:

- CPU: Intel® Xeon® Silver 4210
- RAM: 16GB or above
- Storage: 250GB (SSD preferred, depend on retained data size)

Deployment types

- Install rpm software package on CentOS
- Run OVA format file by virtual software or system

Centralized Management

- Local data forwarding, no user traffic sent to the controller
- Bank-grade TLS encryption from end-to-end with X.509 certificate based authentication
- User and privilege management, support multi-factor safety authentication
- Mobile app for iOS and Android
- Network-based management and unified device configuration
- Network/device/client/guest monitoring
- Network topology to display the visual information of device and client
- Layer2 and Layer3 based AP discovery

Access Security and Control

- Supports access policy configuration (blacklist, whitelist, time policy schedule)
- Multiple WLAN security type including open, personal, enterprise, ppsk, etc
- Bandwidth rules for client access
- Supports firewall to control both wired and wireless client
- Rogue AP detection and alert

Reporting and Monitoring

- Real-time devices and client monitoring
- Detailed reports by network, device, client, etc
- Retrieval of historical data for statistical observations
- Customize monitoring pannel (add and remove chart, adjust the display order)

.

Supported Devices

- GWN Series Access Points: GWN7610, GWN7600(LR), GWN7630(LR), GWN7602, GWN7605(LR), GWN7615, GWN7660(LR), GWN7664(LR), GWN7624, GWN7625
- GWN Routers: GWN7052, GWN7062

Enterprise Features

- Internet/LAN/Wi-Fi management
- Supports Wi-Fi Alliance Voice-Enterprise
- Support Mesh to extend wireless network
- Real-time Wi-Fi Scan for deployment
- URL access log collection
- Multiple Wi-Fi performance optimization methods including band- steering, Minimum RSSI, ARP Proxy, IP multicast to unicast, etc
- Multiple API for third-party application developing
- Presence API for pedestrian flow monitoring
- Supports Inventory to manage the unused device.
- Supports device, client and inventory export

Captive Portals

- Splash page with built-in WYSIWYG editor
- Facebook, Twitter, Google integration
- Multiple captive portal authentications including simple password, radius, custom field, email, sms etc.
- Voucher management, supports voucher download and print, support customize voucher logo and slogan
- External captive portal integration
- Real-time guest statistics and monitoring
- Advertisement integration with flexible strategies
- Export guest info into file and automatically send to email

Maintenance

- Real-time alerts with customize setting and notification
- Ping/traceroute/capture/ssh remote access
- Both configuration and data backup
- Scheduled device firmware update and LED control
- Change log for audit trail

Languages

- English, Chinese, French, German, Portuguese, Spanish, Vietnamese, Arabic, Dansk, Suomi, Greek, Hebrew, Italian, Russian, Serbian