

Grandstream Networks, Inc.

Grandstream Device Management Tool

User Guide



Table of Content

INTRODUCTION.....	3
OVERVIEW OF FUNCTIONS AND UI.....	4
COMPATIBLE MODELS	4
BASIC FUNCTIONS	4
BASIC INTERFACE	4
TUTORIAL OF FUNCTIONS	6
NEW FILE	6
CREATE BY ORDER.....	7
IMPORT OPTION	8
EXPORT OPTION.....	9
HTTPD SERVICE	10
PNP FEATURE	11
LANGUAGE OPTIONS.....	11
OPTIONS.....	12
<i>BOOT AUTO START</i>	<i>12</i>
<i>RECOVERY DATA.....</i>	<i>12</i>
<i>AUTO HTTPD</i>	<i>12</i>
<i>CONFIGURE HTTPD PORT</i>	<i>12</i>



Table of Figures

Figure 1: Grandstream Device Management Tool Main Interface	5
Figure 2: New File Option	6
Figure 3: Create by Order	7
Figure 4: Import Option	8
Figure 5: Finish Importing	9
Figure 6: Export Option	10
Figure 7: Select an Available NIC	10
Figure 8: HTTPD Service Enabled.....	11
Figure 9: Configure HTTPD Port.....	12



INTRODUCTION

Grandstream Device Management Tool is a powerful deployment tool for Grandstream phones. It could configure and generate configuration file(s) for one or more Grandstream phone(s). This tool could help phones administrator to deploy phones with simpler operations and less time. This User Guide describes how to use Grandstream Device Management Tool to configure Grandstream phones. To learn more about Grandstream phones provisioning features, please visit link <http://www.grandstream.com/support> to check Grandstream phones' User Guides and Administration Guides.



OVERVIEW OF FUNCTIONS AND UI

Grandstream Device Management Tool should be installed on Windows platform before using it. Users could use its straightforward and intuitive interface to configure Grandstream phones.

COMPATIBLE MODELS

- GXP16XX
- GXP17XX
- GXP21XX
- DP750/720
- GXV32XX

BASIC FUNCTIONS

- Configure a new configuration file
- Create configuration files by order
- Import .CSV configuration file
- Export .CSV configuration file
- Start HTTPD service
- Enable PNP server
- Languages options
- Options

BASIC INTERFACE

Open the directory where Grandstream Device Management Tool is installed, and double click “GS Manager”. The main screen is shown below:



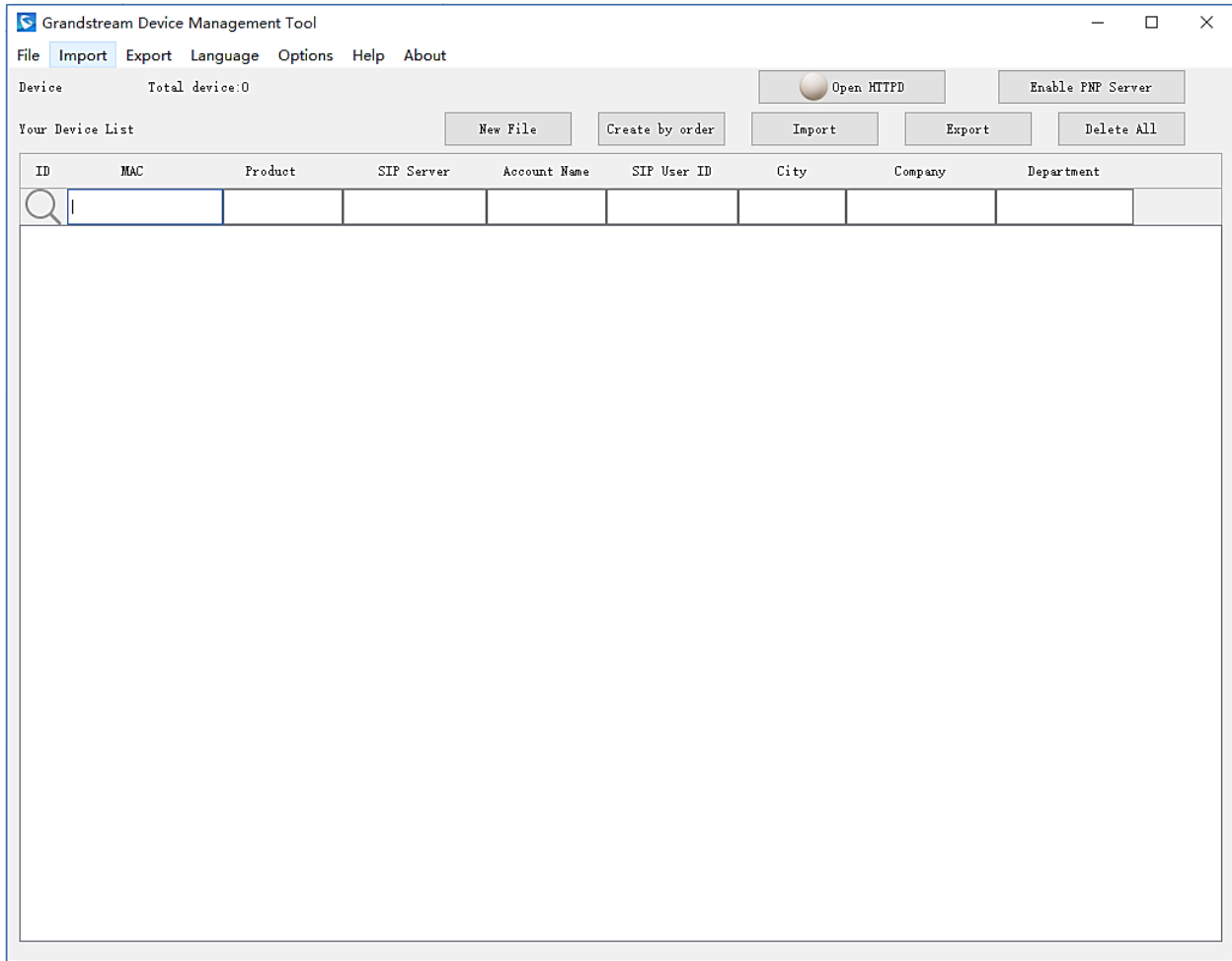
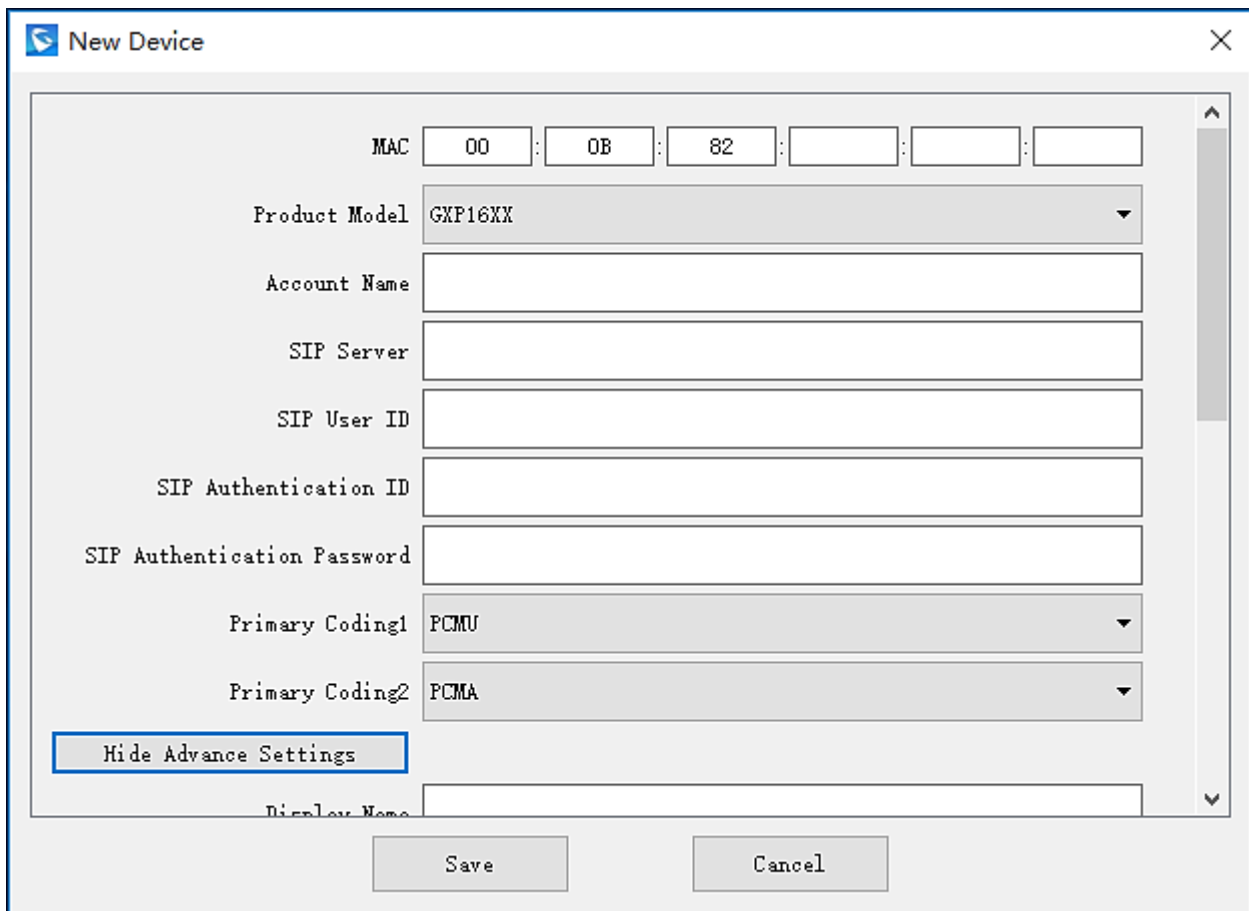


Figure 1: Grandstream Device Management Tool Main Interface

TUTORIAL OF FUNCTIONS

NEW FILE

The New File option is used to create a new configuration file for a specified Grandstream phone. Users need to fill the MAC address, Product model, Account name, and other advanced settings on the New Device interface. Once the configuration is done, users should click Save to store this configuration information on “Your Device List” in this application. The New File option is shown below:



The screenshot shows a 'New Device' configuration window with the following fields and values:

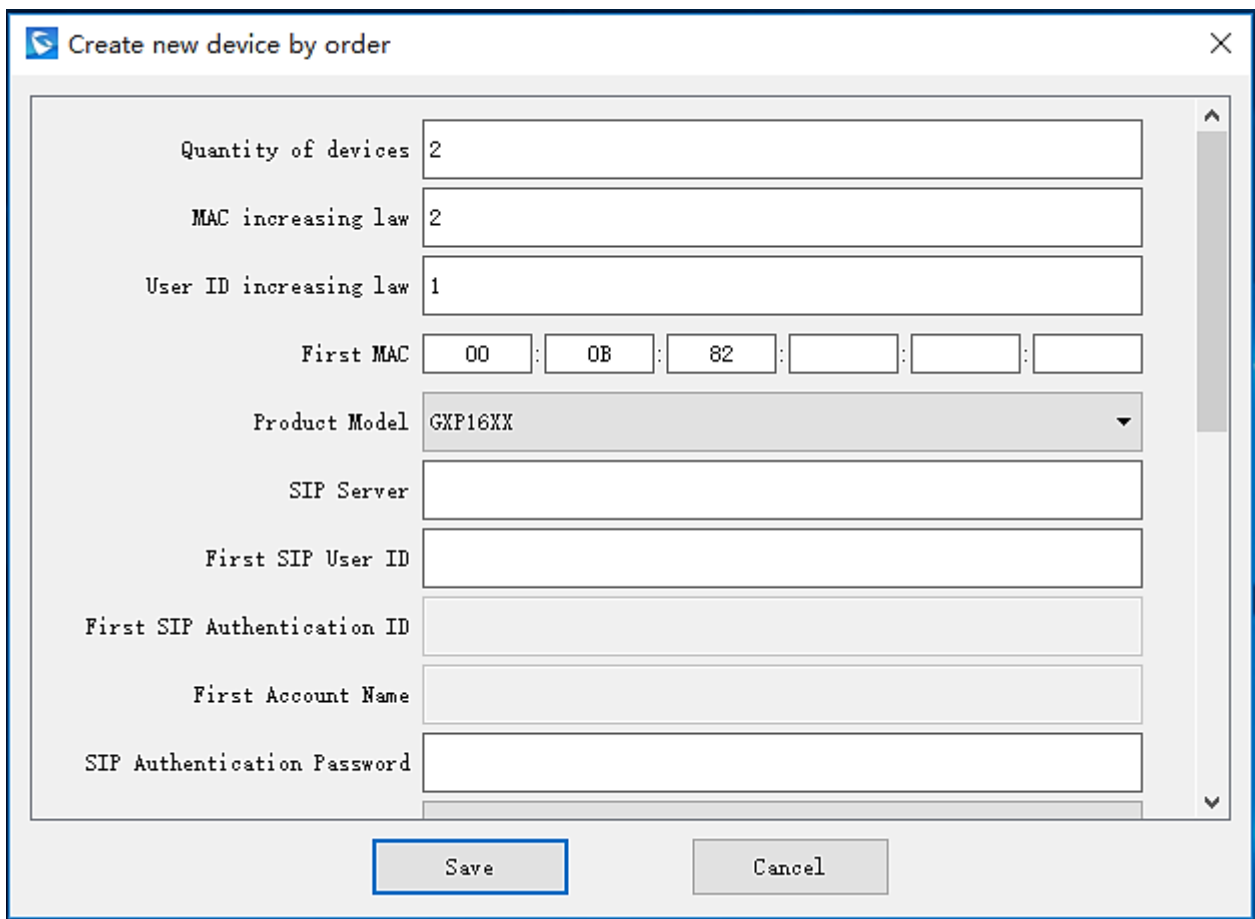
- MAC: 00 : 0B : 82 : [] : [] : []
- Product Model: GXP16XX
- Account Name: []
- SIP Server: []
- SIP User ID: []
- SIP Authentication ID: []
- SIP Authentication Password: []
- Primary Coding1: PCMU
- Primary Coding2: PCMA
- Hide Advance Settings: [] (highlighted)
- Display Name: []

Buttons at the bottom: Save, Cancel.

Figure 2: New File Option

CREATE BY ORDER

The Create by Order option is used to create two or more configuration files for Grandstream phones. Users not only need to fill the MAC address, Account name, codec configurations and other necessary settings, and also need to define the quantity of devices, MAC and User ID increasing law. For this reason, the devices' configuration files could be generated automatically following this defined law. Once the configuration is done, users should click Save to store this configuration information on "Your Device List" one by one in this application. The Create by Order option is shown below:



Create new device by order

Quantity of devices: 2

MAC increasing law: 2

User ID increasing law: 1

First MAC: 00 : 0B : 82 : : :

Product Model: GXP16XX

SIP Server:

First SIP User ID:

First SIP Authentication ID:

First Account Name:

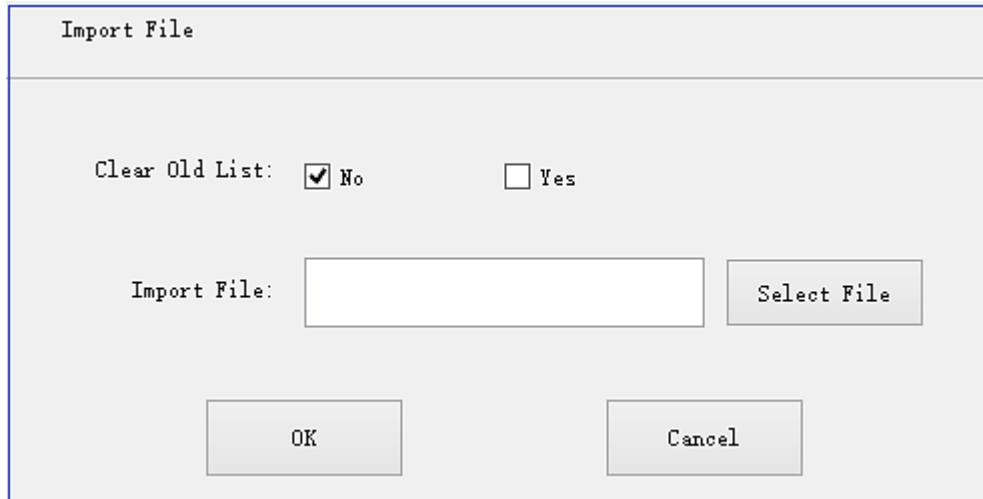
SIP Authentication Password:

Save Cancel

Figure 3: Create by Order

IMPORT OPTION

The Import feature allows users to import existing .CSV configuration file into Grandstream Device Management Tool, and the configuration file could be found on “Your Device List” after importing.



Import File

Clear Old List: No Yes

Import File:

Figure 4: Import Option

As the figure shows above, users need to select the .CSV configuration file and click OK to finish importing.

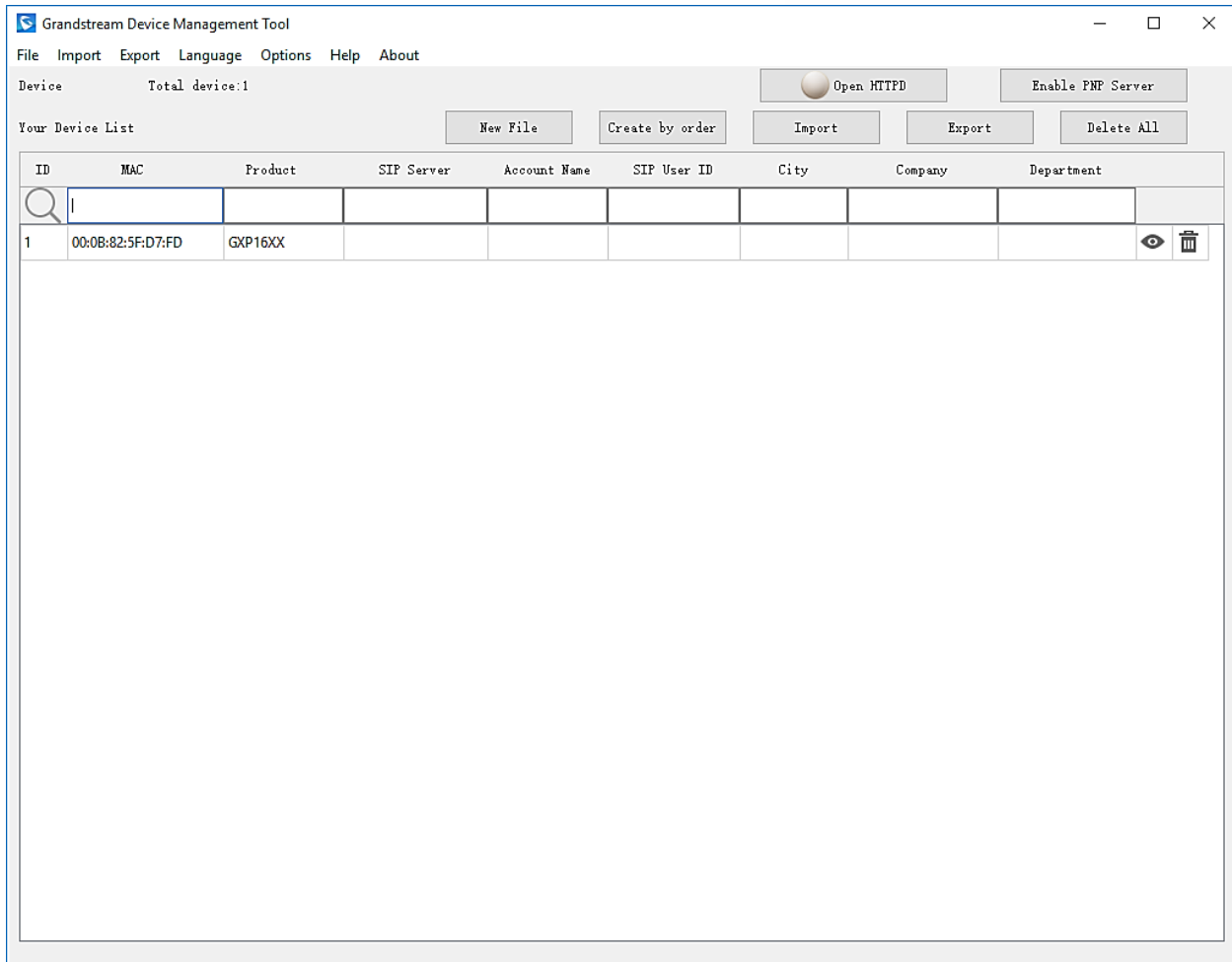


Figure 5: Finish Importing

- **Clear Old list:** If “No” is selected, the previous device configuration file will not be lost. If “Yes” is selected, the previous device configuration file will be overwritten.

EXPORT OPTION

The Export feature allows users to export configuration file from Grandstream Device Management Tool to PC as .CSV file.



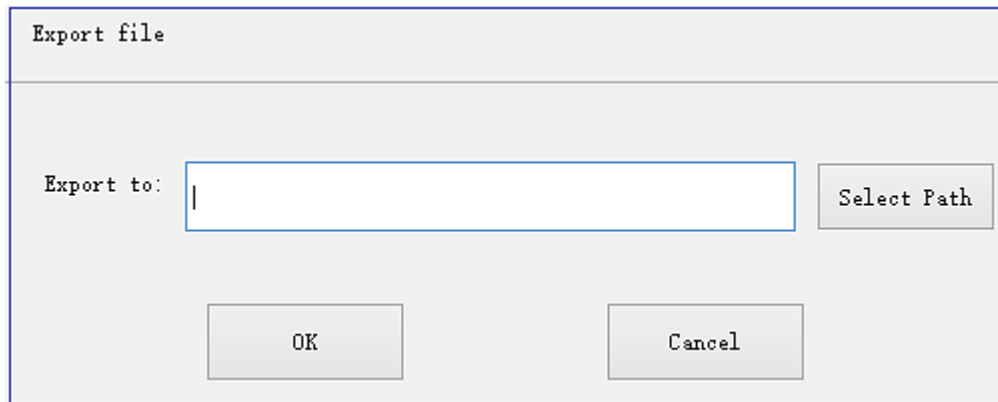
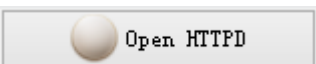


Figure 6: Export Option

As the figure shows above, users need to select the path where users want to export the configuration file, and click on OK to finish exporting. The default file name is “devices.csv”.

HTTPD SERVICE

The HTTPD service allows users to use Grandstream Device Management Tool as a configuration server, and users could configure Grandstream phones to fetch the configuration file via HTTPD service. Move

cursor to , and click on the “white ball” to activate the HTTPD service. There will be a dialog to ask users to select an available NIC for HTTPD service, as figure shows below:

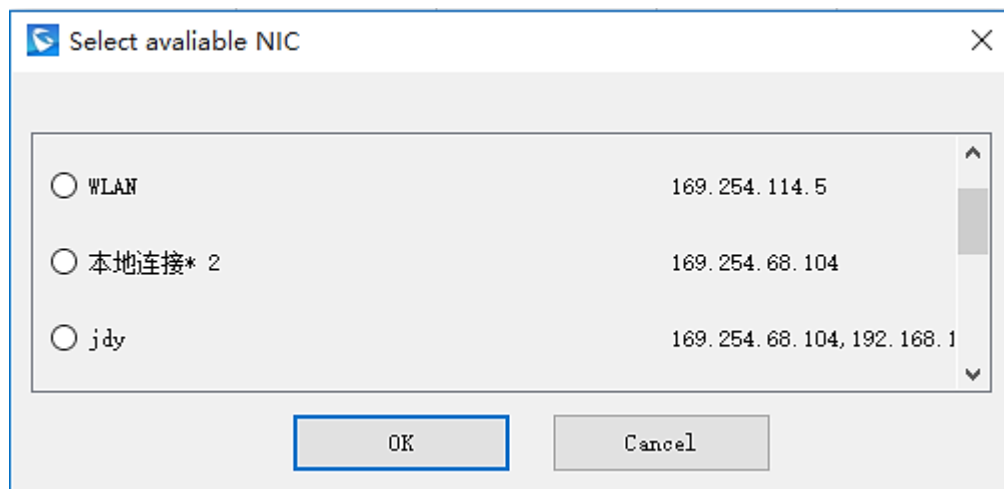


Figure 7: Select an Available NIC

Then, users need to press OK to select the NIC. An HTTPD service path and port number will appear on screen. Write down this information for the next step. As the figure shows blow:

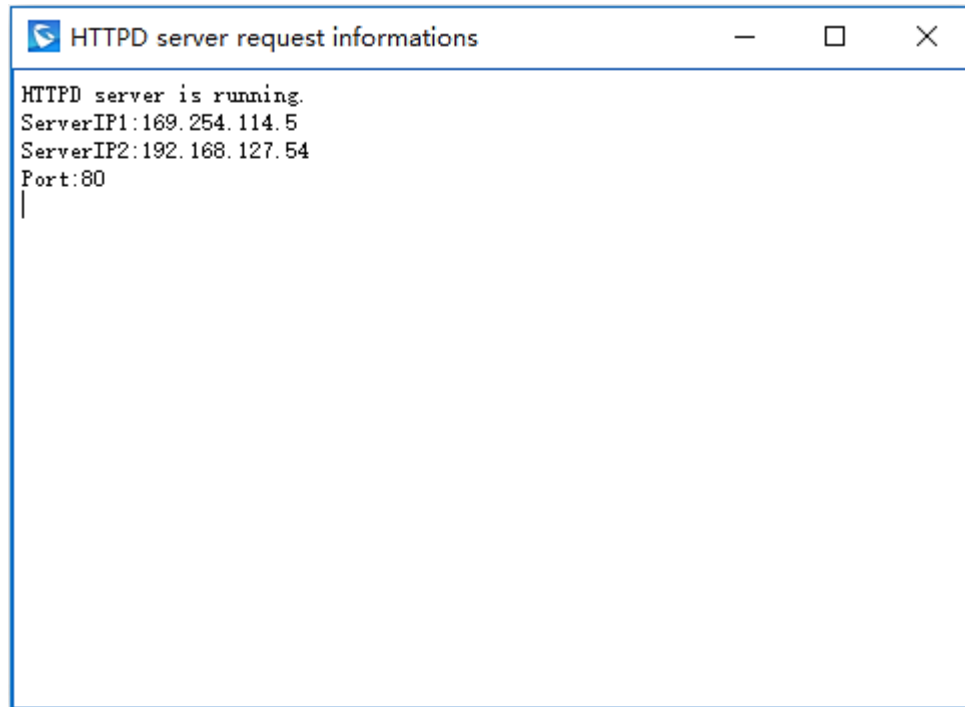



Figure 8: HTTPD Service Enabled

Then, users need to configure the Config Server Path on Grandstream phones. For example, on GXP2140, users need to login phone's web UI, and go to Maintenance -> Upgrade and Provisioning, fill the HTTPD server path into Config Server Path. When Grandstream phone finishes rebooting, phone will fetch the configuration file from HTTPD server.

PNP FEATURE

The PNP feature allows users to deploy a large amount of Grandstream phones easily. When HTTPD service is enabled, click on , the PNP service is enabled.

For Grandstream phones, users need to have at least 1 activated account on the phone, and enable "3CX Auto Provision" option on the phone side. Once phone finishes rebooting, phone will fetch the configuration file from Grandstream Device Management Tool automatically.

Note: Grandstream GXP/GXV phones have at least 1 activated account as default. The "3CX Auto Provision" is enabled as default.

LANGUAGE OPTIONS



Users could choose English/Chinese language as the UI displaying language. The default UI displaying language is the one users choose during installation process.

OPTIONS

BOOT AUTO START

Automatically run Grandstream Device Management Tool on Windows startup.

RECOVERY DATA

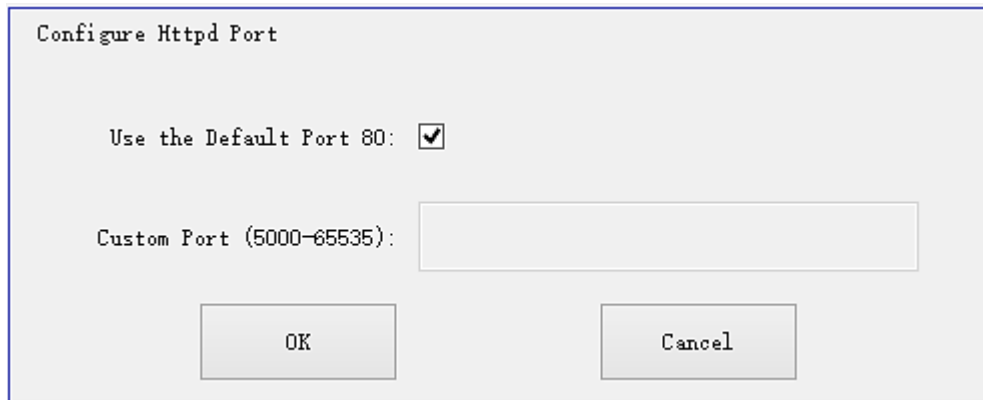
Loads the last saved configuration on program startup.

AUTO HTTPD

Automatically start HTTPD server on program startup.

CONFIGURE HTTPD PORT

Users could use the default port 80, or custom port between 5000 and 65535. As the figure shows below:



Configure Httpd Port

Use the Default Port 80:

Custom Port (5000-65535):

OK Cancel

Figure 9: Configure HTTPD Port