

# UCM RemoteConnect



**GRANDSTREAM**

CONNECTING THE WORLD

# UCM6300 ECOSYSTEM

Communicate & Collaborate from anywhere on any device...

The **UCM6300 Ecosystem** pairs together the customizability and control of an on-premise IP PBX with the remote-access and flexibility of a cloud solution to provide an **easy-to-manage hybrid communication platform** for businesses of all sizes.



***Reliability and Control***  
*On-Premise Solutions*



***Power and Flexibility***  
*Cloud Solutions*





# UCM6300 ECOSYSTEM

Unified Communications and Collaboration Solution



1. UCM6300 Series & UCM6300 Audio Series



2. Wave app



3. UCM RemoteConnect

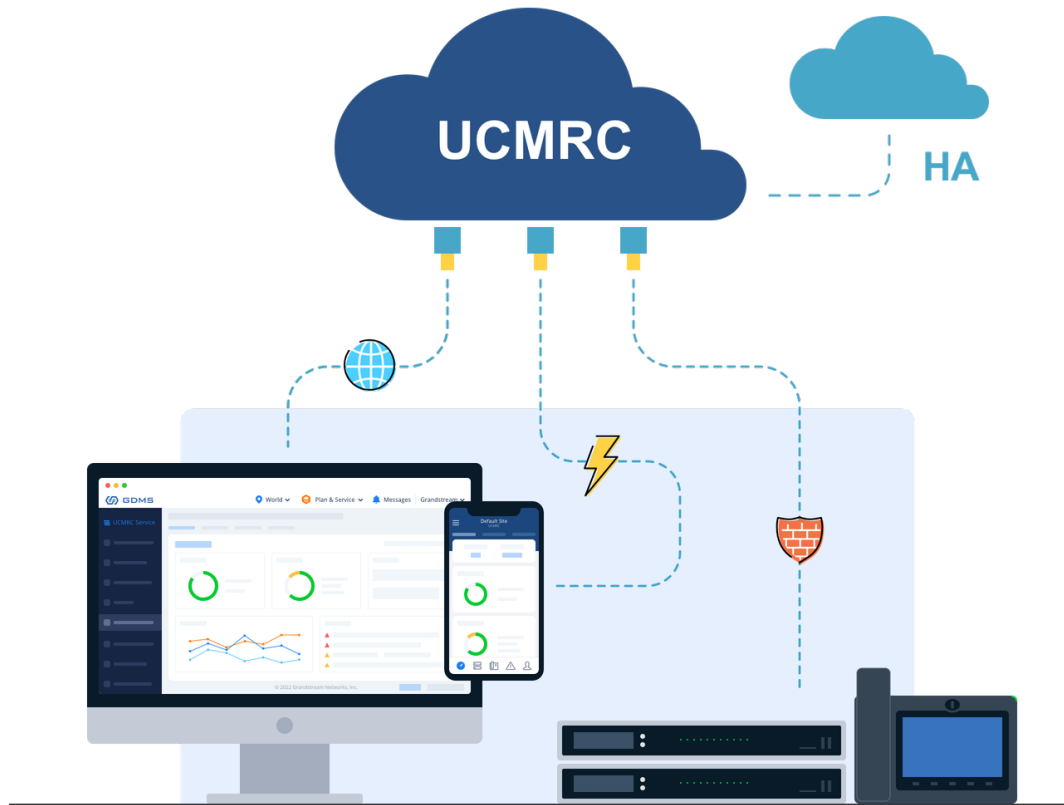


# UCM RemoteConnect

*Mobilize Your Business*

UCM RemoteConnect empowers businesses to easily build a secure communications and collaboration solution for all workers, on-site and remote.

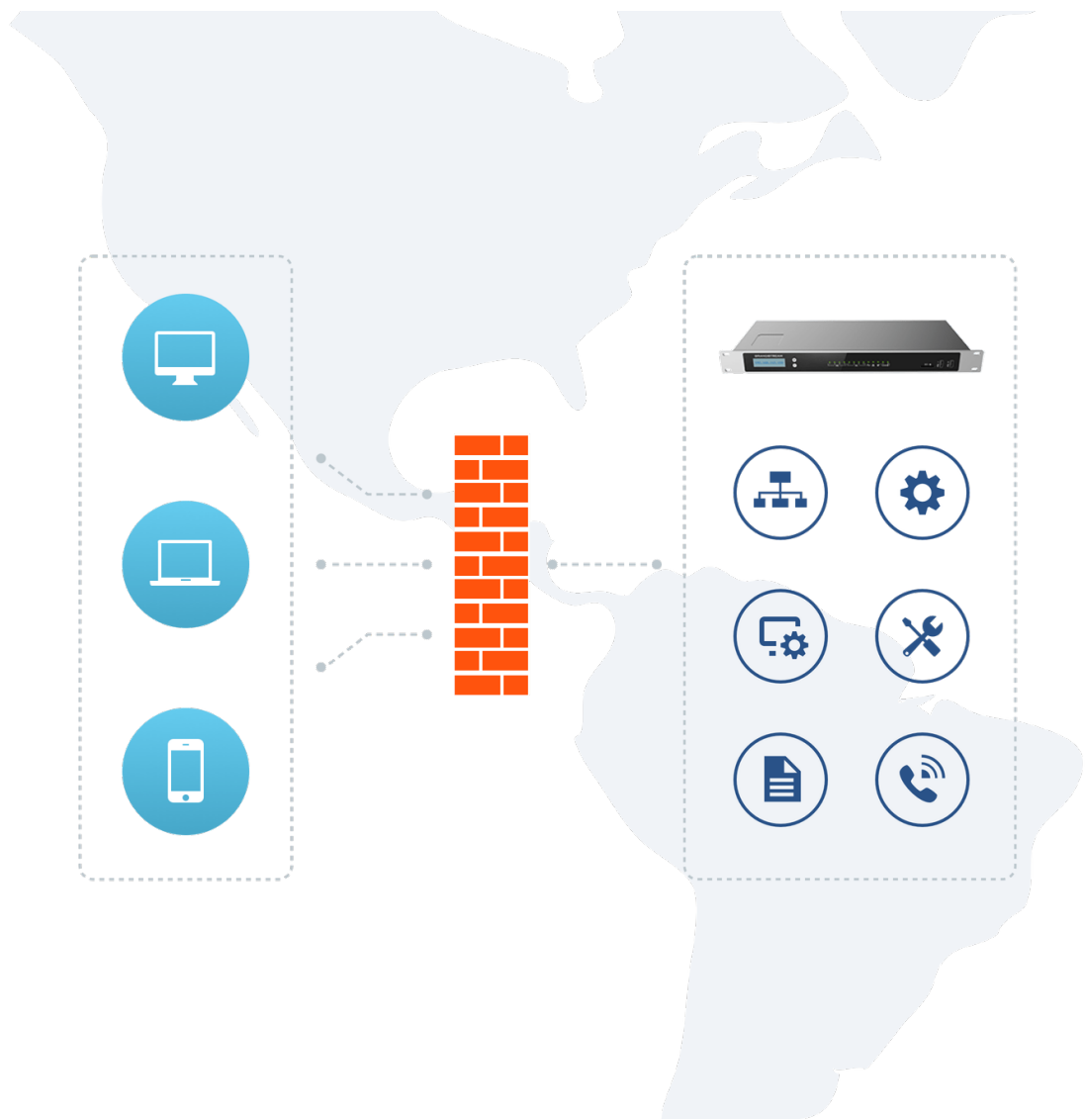




## Securely Collaborate with UCM RemoteConnect

- Cloud-based platform that makes it easy for you to setup a secure communication solution that can be accessed from anywhere
- Allows your team to communicate seamlessly by securing connections between the UCM6300 Series, the Wave app and Grandstream SIP endpoints - no matter if users are in the office, working from home or travelling

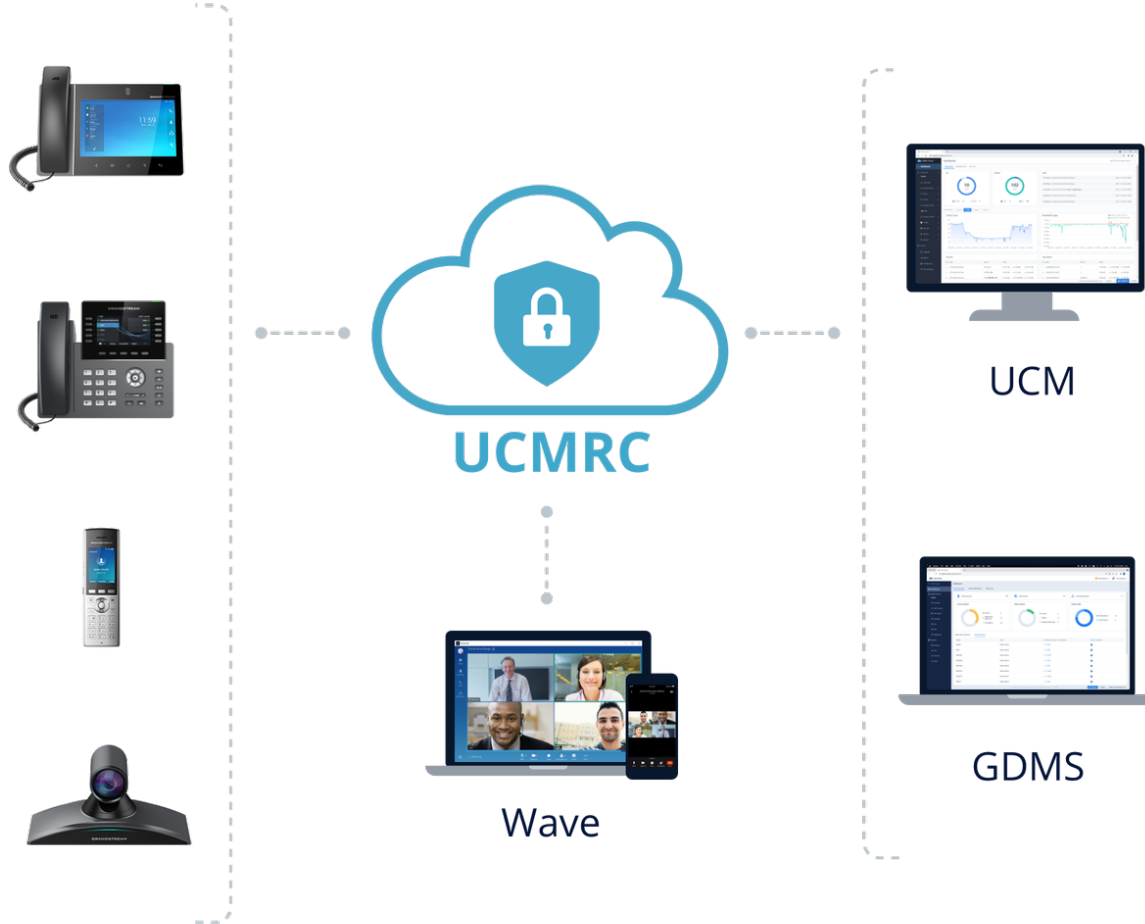




## UCMRC Makes it Easy to Build a Communication Solution that Can Be Accessed from Anywhere

- Centralized, cloud setup & management for your UCM6300 Series devices
- Automatic NAT traversal to ensure secure remote connections
- Active network security protection and monitoring
- Provides a failover mechanism to protect from network outages





## Easy Setup & Remote Management of the UCM6300 Ecosystem

- UCM RemoteConnect provides a zero-touch out-of-box platform that allows remote users & devices to reach your UCM6300 from outside your corporate network
- It is up-and-running immediately
- Allows you to manage the UCM6300 Series remotely & centrally





## Powerful Network Security

- UCMRC provides always-on, automatic NAT firewall traversal to ensure secure connections by users outside of your network
- Provides active security protection, monitoring, alarms, troubleshooting and more to ensure your network is always secure.



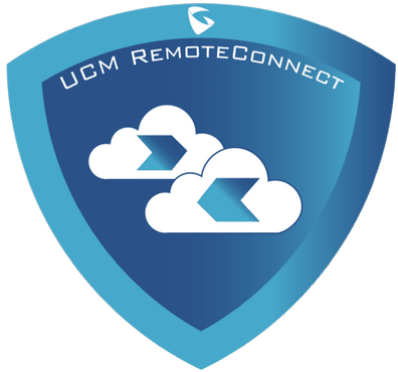




## Wave app – Your Collaboration Hub

- Available for mobile, desktop and web, the Wave app allows your team to communicate and collaborate from anywhere, at anytime, using nearly any device.
- No matter if they are in the office, travelling, or working from home, Wave provides easy access to voice and video calls, meetings, chat, file sharing, voicemail and more.

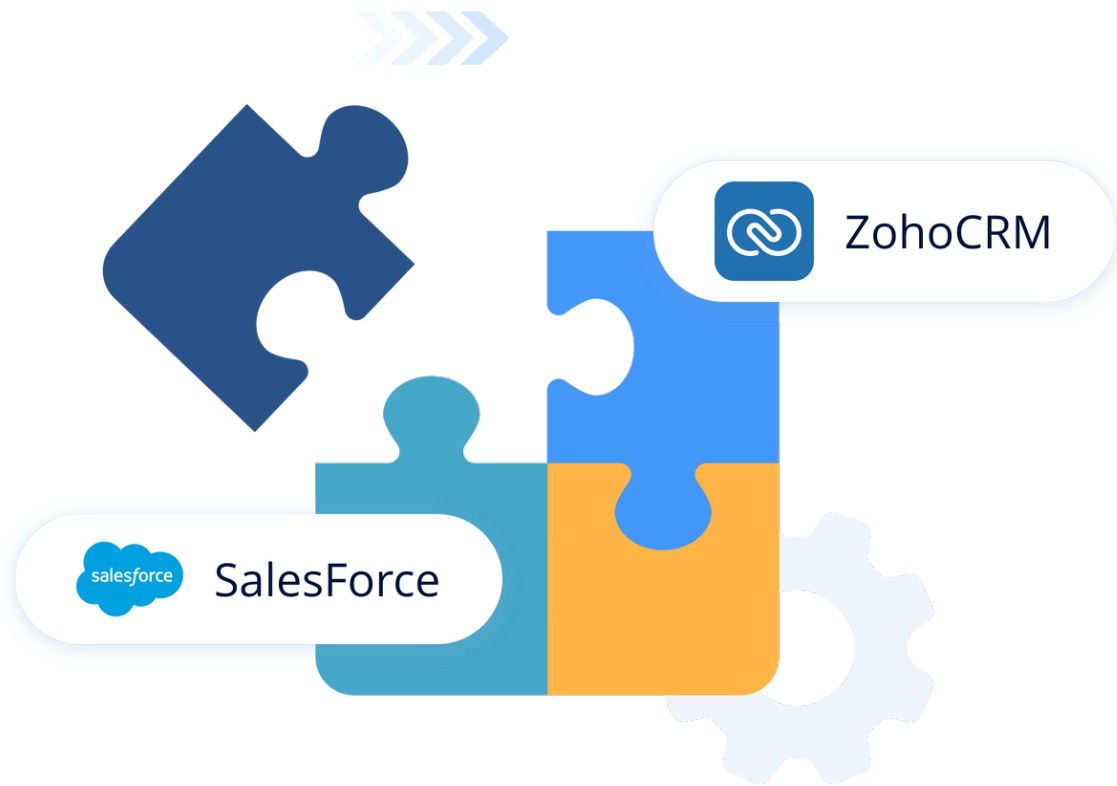




## One Network for All Locations

The Cloud IM add-on allows you to sync-together UCM6300 Series devices in any location, enabling businesses to build one network that can be utilized across all locations and accessed remotely.

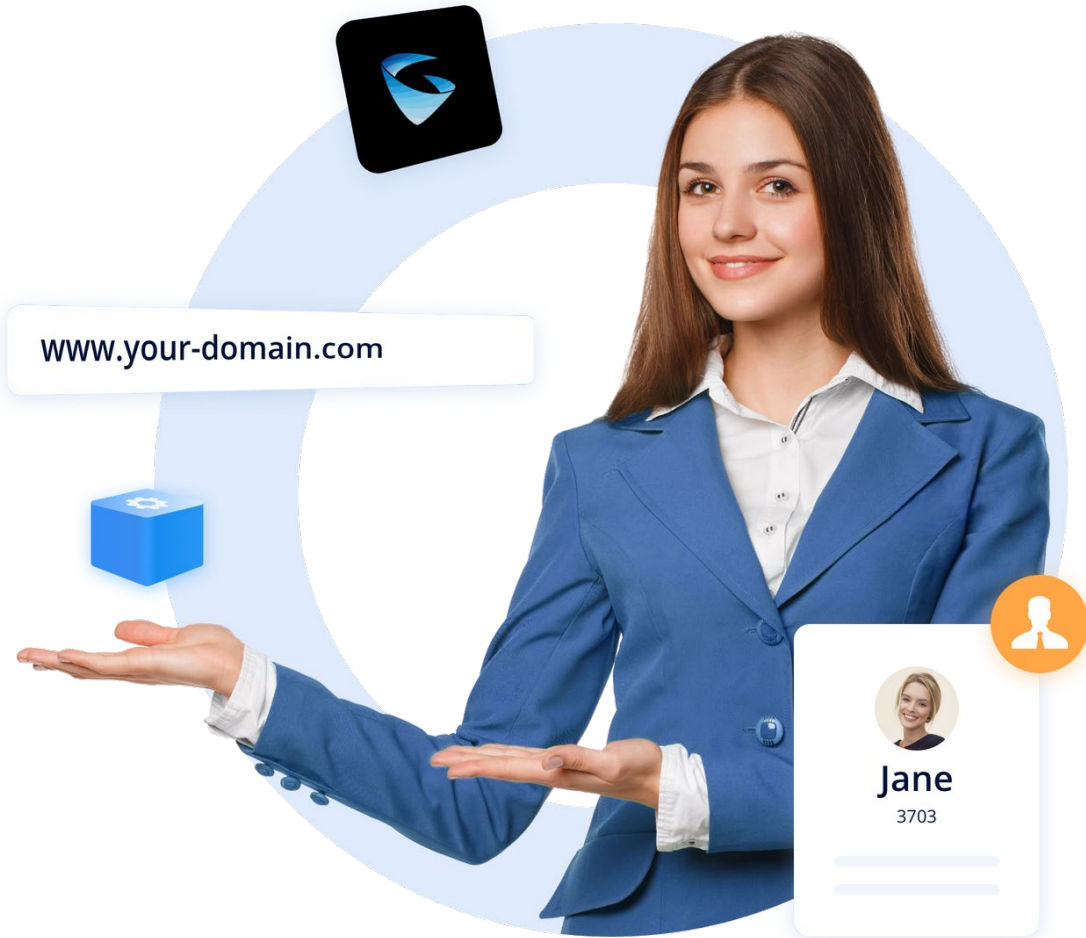




## Secure Integration and Expansion

- Wave can be integrated with a wide variety of services and applications, including popular CRM platforms, WebRTC and SIP trunks, and more
- Wave also provides an SDK that allows it to be integrated with many other third-party apps and services





## Customize for Your Business

UCM RemoteConnect allows you to customize your account for your specific business, including custom domain names, logos, contacts and much more.





Huge Cloud Storage



Data Backup



File Backup



Storage Security

## Get More From Your UCM with Cloud Storage

- Cloud storage allows you expand the local storage of any UCM6300 Series
- Provides critical backup of data and files
- Allows the UCM Series to maximize core services & functionality



# UCMRC Plans

	Basic	Plus	Pro	Business	Enterprise
List Price	FREE	\$195/year	\$299/year	\$469/year	\$829/year
Wave app included	✓	✓	✓	✓	✓
Automated NAT Firewall Traversal	✓	✓	✓	✓	✓
Registered Remote Users/Devices	10	50	100	200	400
Concurrent Voice/Video Calls/Meetings	2	8	16	32	64
Maximum Time Per Remote Call/Meeting	20 mins	Unlimited	Unlimited	Unlimited	Unlimited
Max Daily Allotment for Remote Calls/Meetings	2 Hours	Unlimited	Unlimited	Unlimited	Unlimited
Remote Admin of UCM6300 & GS Endpoints	Limited	Comprehensive	Comprehensive	Advanced	Advanced
Cloud Storage	No	1GB	2GB	5GB	10GB
System/Device Security & Status Monitoring	No	✓	✓	✓	✓
Other Features <i>(see next slides)</i>	No	Comprehensive	Comprehensive	Advanced	Advanced
Cloud IM Service	No	No	Add-On	Add-On	Included
Free Trial	Unlimited	First 3 Months	No	No	No
Purchase Method	Free	Sold Exclusively Through Authorized Channel Partners			

# Admin Features

	Basic	Plus	Pro	Business	Enterprise
	FREE	\$195/year	\$299/year	\$469/year	\$829/year
Remote Access to UCM Admin	✓	✓	✓	✓	✓
Access UCM Model info on UCMRC	✓	✓	✓	✓	✓
Access Endpoint Info and Manage Endpoints	✓	✓	✓	✓	✓
Mobile App to remotely manage Endpoint Devices	✓	✓	✓	✓	✓
Mobile App to remotely manage UCM		✓	✓	✓	✓
Auto-Sync SIP accounts on UCM server to GDMS		✓	✓	✓	✓
Enhanced security, real-time monitoring & alerts		✓	✓	✓	✓
Regular Email Reports of Stats and Device Status		✓	✓	✓	✓
User Defined Alerts by Email		✓	✓	✓	✓
Call Quality Statistics Analysis/Reports				✓	✓
Record UCM Alerts and Send SMS Alerts <i>(North America Only)</i>				✓	✓



# Other Features

	Basic	Plus	Pro	Business	Enterprise
	FREE	\$195/year	\$299/year	\$469/year	\$829/year
Wave Plugin Intergradation Capability		✓	✓	✓	✓
WebRTC Trunk		✓	✓	✓	✓
Custom Third-Level Domain Name		✓	✓	✓	✓
Custom Top-Level Domain & HTTPS Certification				✓	✓
Custom Logo in Web UI, Wave, Reports, Alerts				✓	✓
Cloud IM Service					✓
Cloud Storage		1GB	2GB	5GB	10GB





# Plan Add-Ons

		Basic	Plus	Pro	Business	Enterprise
		FREE	\$195/year	\$299/year	\$469/year	\$829/year
Admin-Only (1GB cloud storage & Remote Admin feature from Plus/Pro plans)	\$49 / year	✓				
Extra 50GB Cloud Storage	\$199 / year	✓	✓	✓	✓	✓
Cloud IM Service	\$79 / year			✓	✓	Included



# APPLICATION SCENEARIOS

UCM RemoteConnect



## Basic

Small offices, restaurants, cafes

Very few remote users and basic remote admin capability is sufficient



## Basic + Admin Add-On

Chain restaurants, hospitals

Very few remote users but advanced remote admin capability is critical



## Plus

Residential, apartments, college dorms

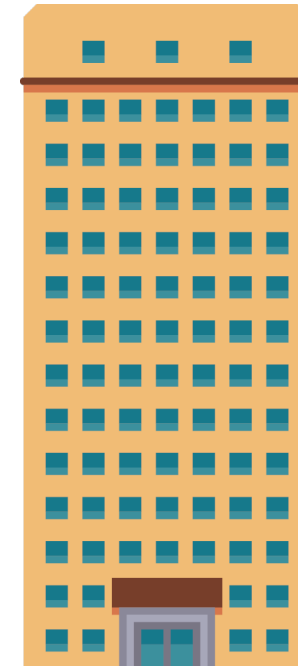
Ideal for door access control solutions with many audio/video intercom stations and mobile apps



## Pro

Small-to-medium business

A modest remote workforce with audio/video/collaboration needs



## Business

Medium business

A medium business with a modest remote workforce and audio, video and collaboration needs



## Enterprise

Large Business

A large business with a large remote workforce and audio, video and collaboration needs

# UCM6300 ECOSYSTEM

## Solution Diagram



# Thank You!



**GRANDSTREAM**

CONNECTING THE WORLD