

GWN7700M Series Multi-Gigabit Unmanaged Switches: Overview and Basics



About the GWN7700M Series

The GWN7700M series are unmanaged multi-Gigabit network switches that provide high-speed network connectivity up to 2.5Gbps to home offices and small-to-medium businesses. These 6 and 9-port multi-Gigabit switches support fast Ethernet, 1-Gigabit and 2.5-Gigabit network speeds while including 1 SFP+ Gigabit fiber port that provides 1-Gigabit or 10-Gigabit high-speed uplink connectivity to your network. The GWN7700M and GWN77001M require no configuration or installation, are desktop and wall-mountable, and provide auto MDI/MDIX to eliminate the need for crossover cables.

Product Positioning

The GWN7700M series supports auto negotiation on each port to recognize the speeds of 100/1000/2500Mbps network devices and intelligently adjust for compatibility and optimal performance. The plug-and-play GWN7700M and GWN7701M are the ideal unmanaged network switches for home offices and small-to-medium businesses that require high-speed, multi-Gigabit connectivity.



5 and 8 Multi-Gigabit ports, up to 2.5Gbps



One SFP+ Fiber Port with up to 10-Gigabit connectivity



Broadcast/Multicast/Unicast Storm Control

Competitive Features

- 5 and 8 Multi-Gigabit Copper Ports provide 100/100/2500Mbps connectivity
- One SFP+ Fiber Port with 1 Gigabit or 10-Gigabit connectivity
- Auto MDI/MDIX crossover for all ports
- Broadcast/Multicast/Unicast Storm Control (fixed to 100Mbps) to monitor traffic levels
- Green technology reduces power consumption
- QoS - Supports Default Strict Priority when present
- LED Indicators; Per port: Link/Activity, Per devices: Power
- PoE capabilities on GWN7700MP

GWN7700M Key Technical Specifications

	GWN7700M	GWN7700MP	GWN7701M
Network Protocol	IEEE 802.3i, IEEE 802.3u, IEEE 802.3ab, IEEE 802.3bz(2.5GBASE-T), IEEE 802.3x, IEEE 802.1p, IEEE 802.1x, IEEE 802.3ae, IEEE 802.3aq		
2.5 Gigabit Ethernet Ports	5 Ports, 1x SFP+ Fiber Port, Auto Negotiation, Auto MDI/MDIX	5 Ports; 4 PoE, 1x SFP+ Fiber Port, Auto Negotiation, Auto MDI/MDIX	8 Ports, 1x SFP+ Fiber Port, Auto Negotiation, Auto MDI/MDIX
Network Media	2.5GBase-T / 1000Base-T / 100Base-TX / 10 Base-T _e , Half/Full-Duplex		2.5GBase-T / 1000Base-T / 100Base-TX/10Base-T _e (Half-Duplex only supported in 10/100M mode on port 4-8)
Switching Capability	45Gbps		60Gbps

GWN7700M Series Multi-Gigabit Unmanaged Switches: Features and Benefits

Powerful Processing Capabilities

The GWN7700M series of unmanaged network switches are designed to be plug-and-play devices that are cost-effective, easy to deploy, and have high network speeds. These devices have powerful processing capabilities to ensure they meet the demands of the network that they are installed into. With up to 2.5Gbps port speeds, these devices can handle large amounts of data.

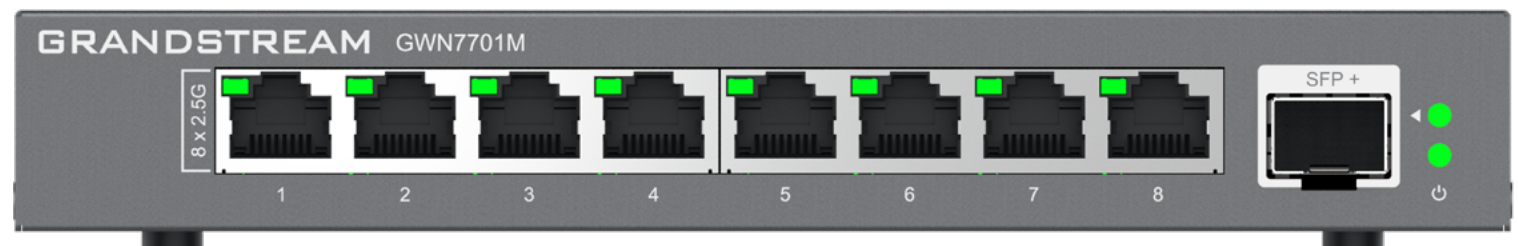
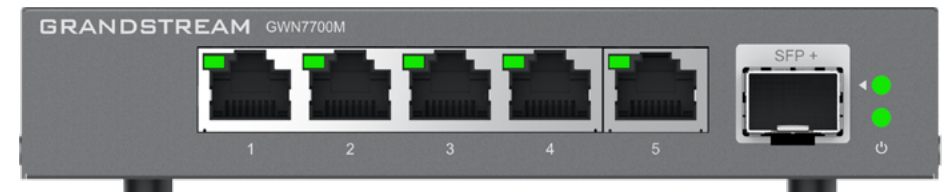
- The GWN7700M series supports up to 5, or 8 2.5Gigabit ports depending on the model, supporting up to 60Gbps switching capacity and 9KB Jumbo Frame capabilities
- All GWN7700M devices support Auto-Negotiation and Auto MDI/MDIX, which are two features that help ensure the network and all devices within it are operating at high transmission rates
- During times of heavy network activity, a switch's port buffers can receive too much traffic and fill up faster than the switch can send the information. GWN7700M switches have IEEE 802.3x Flow Control feature, which tells the transmitting device to wait so the information in the buffer can be sent



2.5G Network Connection

The GWN7700M series has both 2.5Gigabit network speeds and includes 1 SFP+ Gigabit fiber port that provides 1-Gigabit or 10-Gigabit high-speed uplink connectivity.

- Due to 2.5Gigabit port speeds, a GWN7700M series device can serve as an excellent in-between switch to branch endpoint switches to higher layer network switches
- SFP+ Fiber Port enables a 10-Gigabit connection coming from a single port, allowing the GWN7700M series to transfer large amounts of data to higher layer switches from a singular port



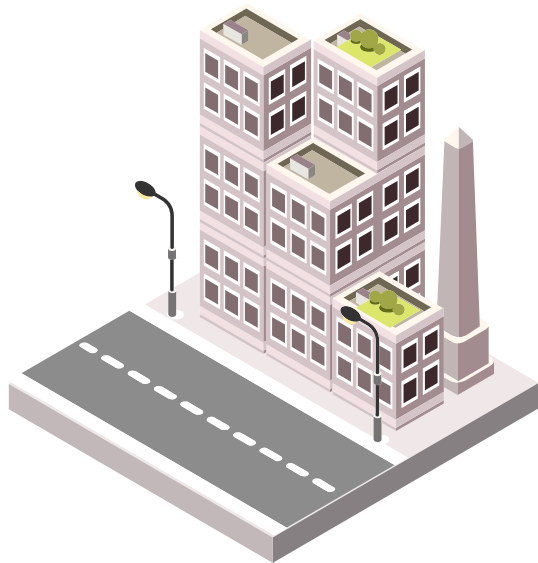
GWN7700M Series Multi-Gigabit Unmanaged Switches: Deployment Scenarios



Offices

Grandstream's GWN7700M Series of Unmanaged Network Switches are a quick and cost-effective way spread both a network and PoE connection throughout a small/medium business and home office.

- 5 and 8 port models, which allows for deployments to be customized depending on location and amount of IP endpoints
- All Ethernet ports support 2.5 gigabit speeds a 1 SFP+ fiber port, enabling a rapid connection between endpoint switches and high layer level switches



Smart Homes

Smart homes have IoT devices and home offices that have many devices that require a network connection; such as computers, phones, printers, and more. A GWN7700M can be deployed in a smart home to serve as a backbone to support these intensive networks.

- With support for 2.5 Gigabit network speeds, including 1 SFP+ 10 Gigabit fiber port, a GWN7700M device can support HD video meetings, streaming media, large file transfers, 4k gaming, and more all simultaneously
- The GWN7700M series provides 6 and 9-port models that require no configuration, making them an ideal plug-and-play solution for homeowners



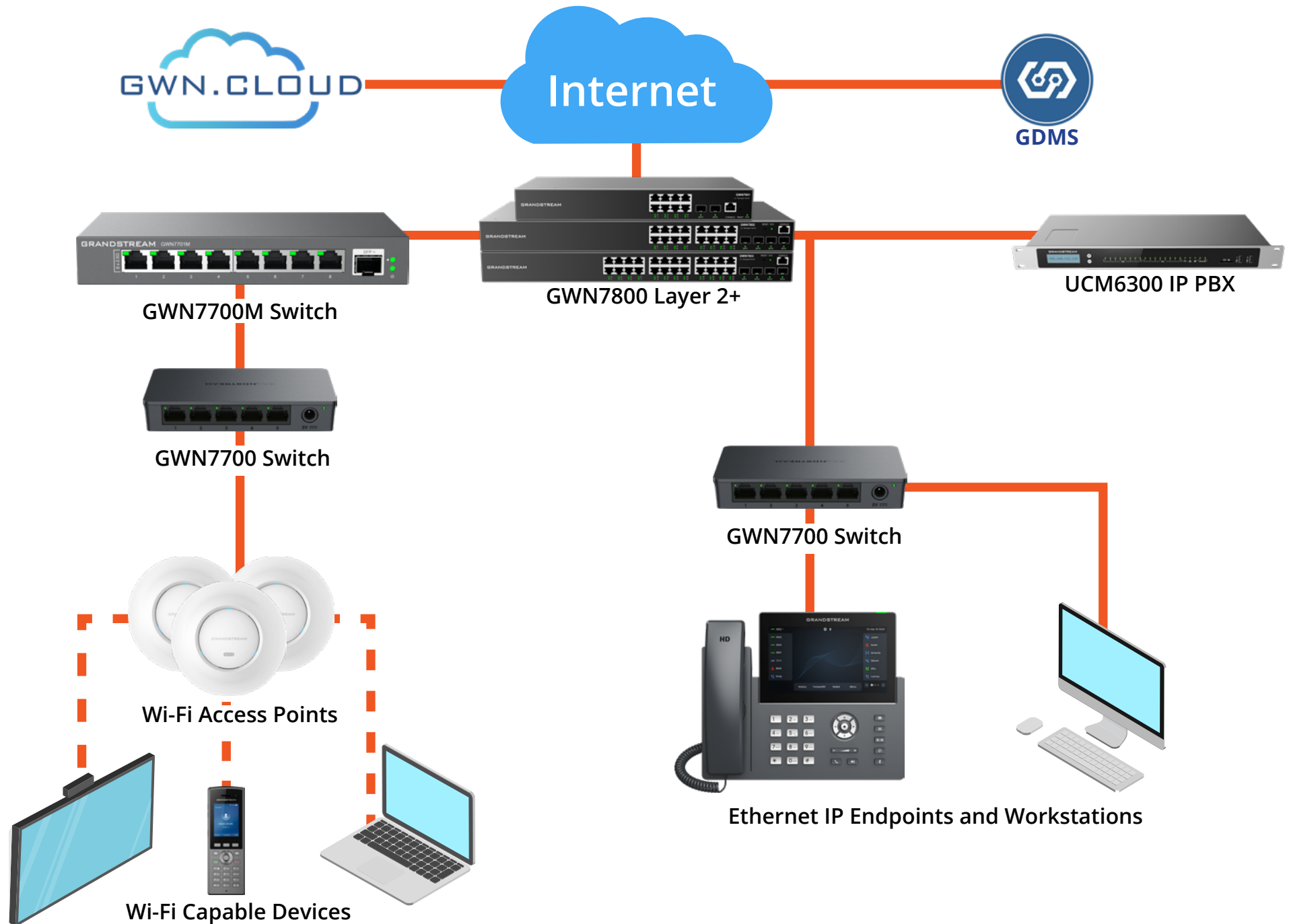
Education

Schools and larger campuses can take advantage of the GWN7700M series by providing a cost-effective switch to spread a network throughout the deployment.

- In older schools that are upgrading and renovating from legacy analog solutions, GWN7700M switches are an affordable and effective solution for quick network expansions to limited devices
- The affordability of the GWN7700M switches coupled with their feature sets ensures schools get the most for their money, meaning a GWN7700M series will always be a bid winner



GWN7700M Series Multi-Gigabit Unmanaged Switches: Deployment Diagram



GWN7700M Series Multi-Gigabit Unmanaged Switches: Grandstream Integration

GWN7800 Layer 2+ Switches

- In larger deployments, Grandstream's GWN7700M switches can serve as a pass-through device for GWN7800 Layer 2+ switches and IP endpoints, extending the number of devices a single GWN7800 switch can serve, especially in a link aggregation (LAG) deployment
- As long as higher layer switches within a deployment support Default Strict Priority, such as Grandstream's GWN7800 series, the GWN7700M series of unmanaged switches can also support the QoS feature



Wi-Fi Access Points

- A GWN7700M series switch can support an entire deployment of Grandstream access points due to its high throughput switching capabilities
- Switches can be easily deployed into the network as a plug-and-play solution, instantly providing a network connection to access points without needing configuration
- Network quality features on the GWN7700M series and QoS features with GWN Wi-Fi Access Points allow for a superior network experience

