



Partner Marketing Kit

GWN.Cloud

April, 2018

Agenda

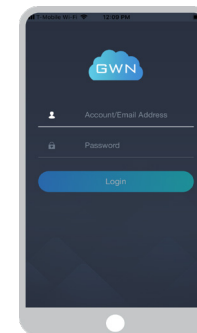
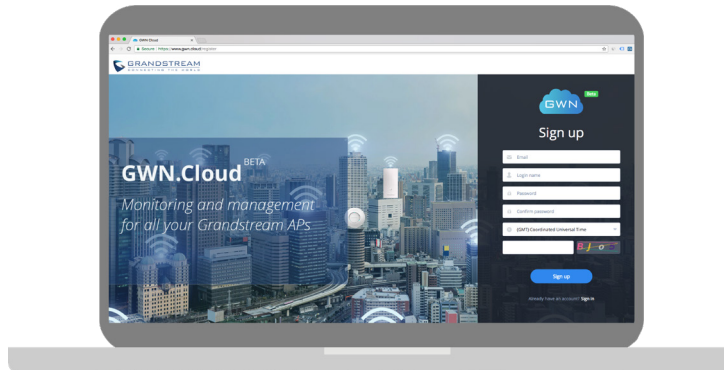
| | |
|--------------------------|---|
| About GWN.Cloud | 3 |
| Messaging Strategy | 4 |
| Brochure | 5 |
| Marketing Assets | 6 |

About GWN.Cloud

The GWN.Cloud is an enterprise-grade, management platform for Grandstream access points. Thanks to streamlined monitoring and maintenance, managing your network across multiple locations has never been easier. Secure networks can be deployed in seconds, then later managed from the same interface. Keep an eye on the network's performance with real-time monitoring, alerts, statistics and reports that can be viewed using a web browser or the mobile application (iOS and Android).

Get started with two easy steps:

1. Create your free account at: <https://www.gwn.cloud/register>
2. Through the GWN.Cloud application or Web UI, add your AP's by entering their MAC address and password



[French](#)

[Italian](#)

[Russian](#)

[German](#)

[Portuguese](#)

[Spanish](#)

Messaging Strategy

GWN.Cloud

| | |
|----------------------------|----------------------------------------------------------------------------------------------------------------------------------------------------------------------------------------------------------------------------------------------------------------------------------------------------------------------------------------------------------------------------------------------------------------------------|
| Tagline | Cloud Controller for the GWN series of AP's |
| Subhead | <i>a real-time, monitoring platform to streamline, manage and support your access points</i> |
| Positioning | Having a cloud management platform that helps users deploy and manage their access points is imperative in this WiFi driven era. GWN.Cloud allows remote-control and access of AP's regardless of the devices' physical location, allowing network admins to streamline the network configuration process, access statistics, reports and alerts, as well as monitor all access points to ensure their smooth performance. |
| Key Differentiators | <ul style="list-style-type: none">• A streamlined network configuration process• Real-time AP and client monitoring• Statistics, reports, and alerts |

[French](#)

[Italian](#)

[Russian](#)

[German](#)

[Portuguese](#)

[Spanish](#)

GWN.Cloud Brochure



GWN.Cloud

Cloud Controller for Grandstream's GWN series

GWN Cloud is an enterprise-grade, management platform for Grandstream access points. Thanks to streamlined monitoring and maintenance, managing your network across multiple locations has never been easier. Secure networks can be deployed in seconds, then later managed from the same interface. Keep an eye on the network's performance with real-time monitoring, alerts, statistics and reports that can be viewed using a web browser or the mobile application.

Centralized WiFi Management



GWN Cloud offers a centralized WiFi network management platform for an entire enterprise, not just a single site.

- Complete scalability
- No limits on number of sites or APs
- Access from anywhere via web or mobile app
- Full network monitoring and reporting

Enterprise-Ready



GWN.Cloud is built to handle the requirements of major enterprises, making it a robust option for SMBs as well.

- Hosted by Amazon Web Services (AWS)
- Bank grade TLS encryption from end-to-end
- X.509 certificate-based authentication
- Resiliency from cloud disruptions

www.grandstream.com

Value-Added Features

Captive Portals



Build custom landing pages to collect customer info

Real-time Monitoring



Realtime reports and status information on your APs

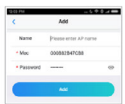
How does it work?

Step 1



Create an account on <https://www.gwn.cloud/register>

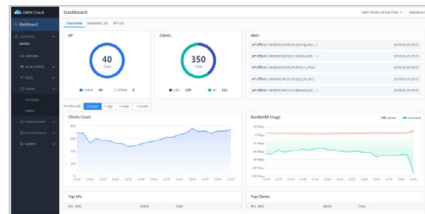
Step 2



Add WiFi APs using mobile app or web UI

Seamless Access

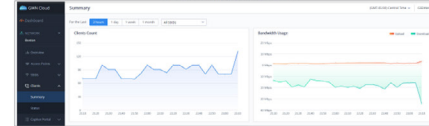
See an overview of all networks through the web user interface or mobile app



www.grandstream.com

Real-Time Monitoring and Reporting

View detailed reports on each network



View detailed reports about each AP



View detailed reports about each WiFi client

Specifications

Function

- Network-based AP management
- Network/client monitoring

Security and Authentication

- Supports several policy configuration (blacklist, whitelist, time policy)
- Multiple security modes including WPA, WPA2, WEP, open, etc.
- Bandwidth rules for client access
- User and privilege management
- QR code authentication

Enterprise Features

- No limit on number of sites or APs
- Hosted by AWS with 99.99% uptime
- Bank grade TLS encryption from end-to-end
- X.509 certificate based authentication
- Supports up to 16 SSIDs per access point
- Supports WiFi Alliance Voice-Enterprise
- Mobile app for iOS and Android

Supported WiFi Access Points

- GWN7610, GWN7600, GWN7600L (IPK Beta)

Captive Portals

- Splash page with built-in WIGWIG editor
- Facebook, Twitter, WeChat integration
- Multiple captive portal authentications including simple password, social login authentication, etc.
- Customizable online splash pages

Reporting and Monitoring

- Real-time WiFi AP and client monitoring
- Detailed real-time reports by network, WiFi client, etc.
- Maintains 30 days of historical data
- No user traffic sent to the cloud
- Real-time alerts

Troubleshooting

- Ping
- Traceroute

Languages

- English, Chinese, French, German, Portuguese and Spanish

www.grandstream.com

[English brochure](#)

[French brochure](#)

[German brochure](#)

[Italian brochure](#)

[Portuguese brochure](#)

[Russian brochure](#)

[Spanish brochure](#)

Marketing Assets

1. [GWN.Cloud logo and branding](#)
2. [GWN.Cloud dashboard screenshots](#)
3. [Social Media banners](#)
4. [Web banners](#)
5. [Email banners](#)
6. [Imagery](#)