



Grandstream Networks, Inc.

GXV3240 IP Multimedia Phone

GUI Customization Guide



GXV3240 GUI Customization Guide

Index

INTRODUCTION	3
OVERVIEW	3
HOW TO CUSTOMIZE GXV3240 LCD GUI.....	3
CONFIGURATION GUIDE.....	4
APP SETTING	4
<i>ADD THIRD PARTY APPLICATIONS.....</i>	<i>5</i>
LAYOUT SETTING	6
CONTACTS SETTINGS	7
SCREENSAVER SETTINGS.....	8
LANGUAGE AND KEYBOARD SETTING.....	9
SCREEN SETTINGS	10
OTHER SETTINGS	11

Table of Figures
GXV3240 GUI Customization Guide

Figure 1: App Setting Interface.....	4
Figure 2: Add a Third Part Application	5
Figure 3: Layout Settings	6
Figure 4: Contacts Interface.....	7
Figure 5: Screensaver Settings.....	8
Figure 6: Language and Keyboard Settings	9
Figure 7: Screen Settings.....	10
Figure 8: Other Settings	11

INTRODUCTION

OVERVIEW

Grandstream GXV3240 IP Multimedia Phone allows users to customize the GUI desktop layout as well as GUI configurations on the phone, offering users with flexibility and control. The GUI configuration includes display/hide certain applications, configure parameters on the phone with specific configuration items, control the display appearance and enable/disable some applications and much more.

This document describes how to use the Grandstream Graphical GUI Customization Tool to customize the GXV3240 GUI settings and applications. This tool allows users to do the following on applications running on GXV3240:

- Turn on/off applications
- Set up parameters
- Personalize phone display
- Turn on/off certain functions on applications

The Grandstream Graphical GUI Customization Tool is available for download from the following link:

<http://www.grandstream.com/support/tools>

HOW TO CUSTOMIZE GXV3240 LCD GUI

1. Unzip the tool package. Double click on “gui_config_tool.exe” to start up the tool. Single click on GXV3240 picture to get into the GXV3240 GUI customization interface.
2. Set up the parameters and application configurations.
3. Generate the GXV3240 custom file “gxv3240cust” by clicking on “File” → “Save As”. The tool also allows users to read and edit the existing custom files.
4. Put the generated custom file “gxv3240cust” on your HTTP/TFTP/HTTPS server.
5. Point the phone's configuration file path to the directory on the server where the custom file locates.
6. Reboot the phone to trigger the upgrade.
7. After booting up, GXV3240 LCD shall display the customized GUI.

CONFIGURATION GUIDE

APP SETTING

The following figure shows the "App Setting" section on the Config Tool.

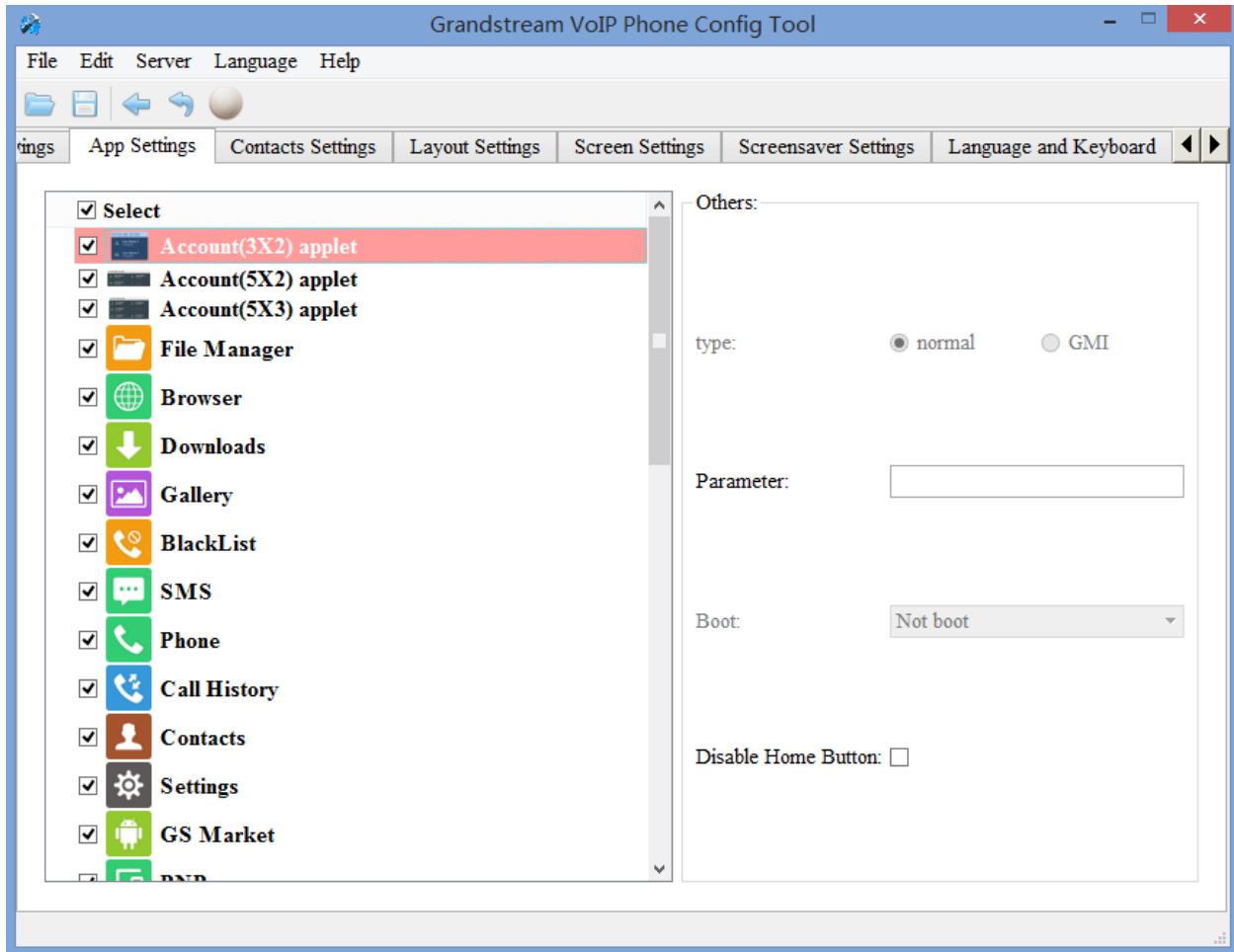


Figure 1: App Setting Interface

In this section, users could configure the following:

- Edit menu layout structure
- Enable or disable specific application
- Edit options to be displayed on GUI interface for a specific application, which includes icon and text for description purpose.(Default settings will be applied if there is no change made)
- Add submenu or link by right-clicking on the left panel list

Note:

On the left panel, “Settings”, “call history” and “phonebook” are mandatory.

ADD THIRD PARTY APPLICATIONS

To add a third party application, with the cursor located within the left panel, right-click the mouse, a drop-down menu will appear, with two options “add submenu” and “add3rdApp”.

Click on “add3rdApp”, a pop-up window “Add Third Party Application” will be shown like the following. Browse and select an “icon” and an “apk”, enter a “Display Name”, and click on “Add”.

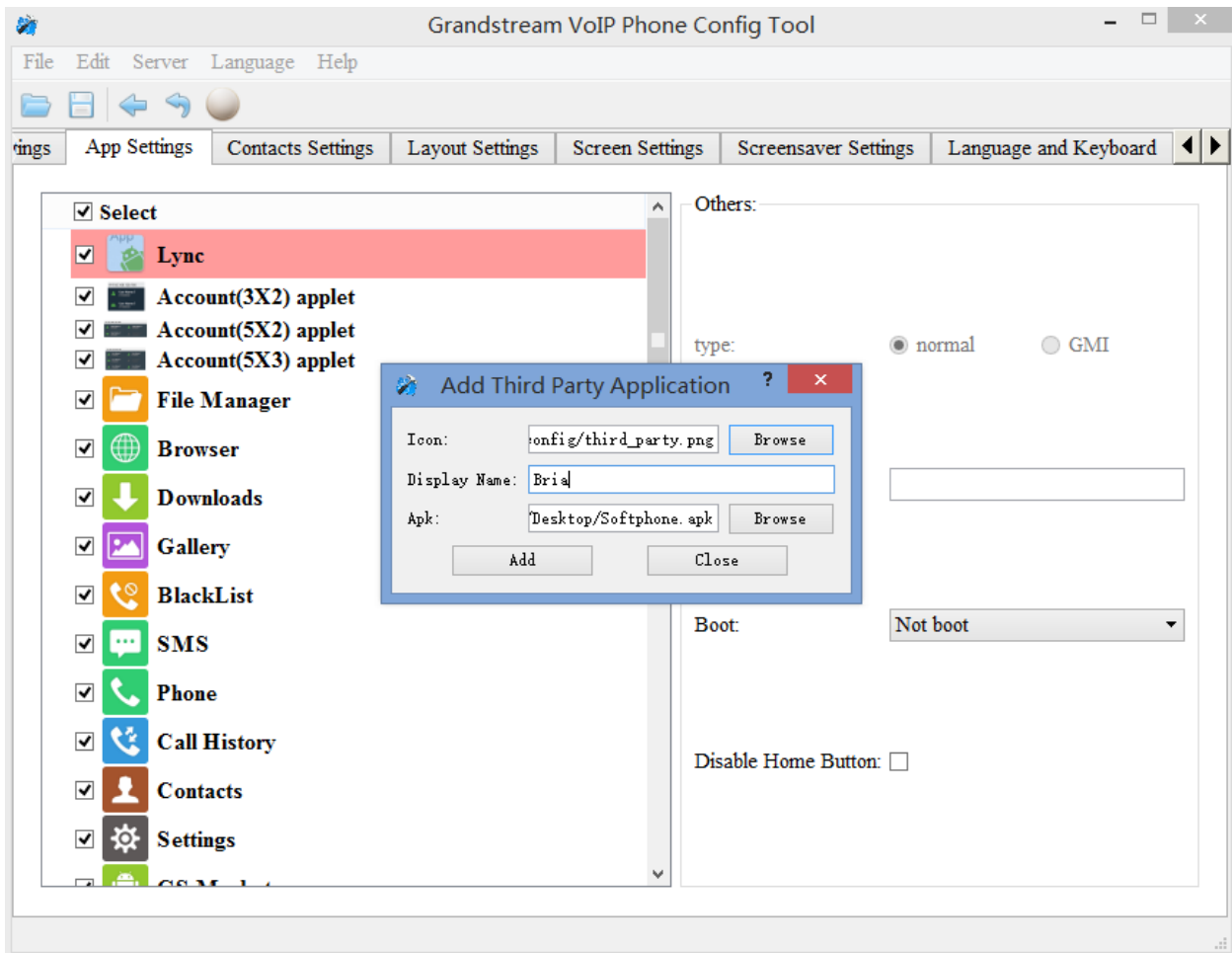


Figure 2: Add a Third Part Application

A third-party application with the icon and display name shows up in the left panel.

LAYOUT SETTING

The following figure shows the "Layout Setting" section on the Config Tool. Users could customize the following for the GXV3240 desktop layout.

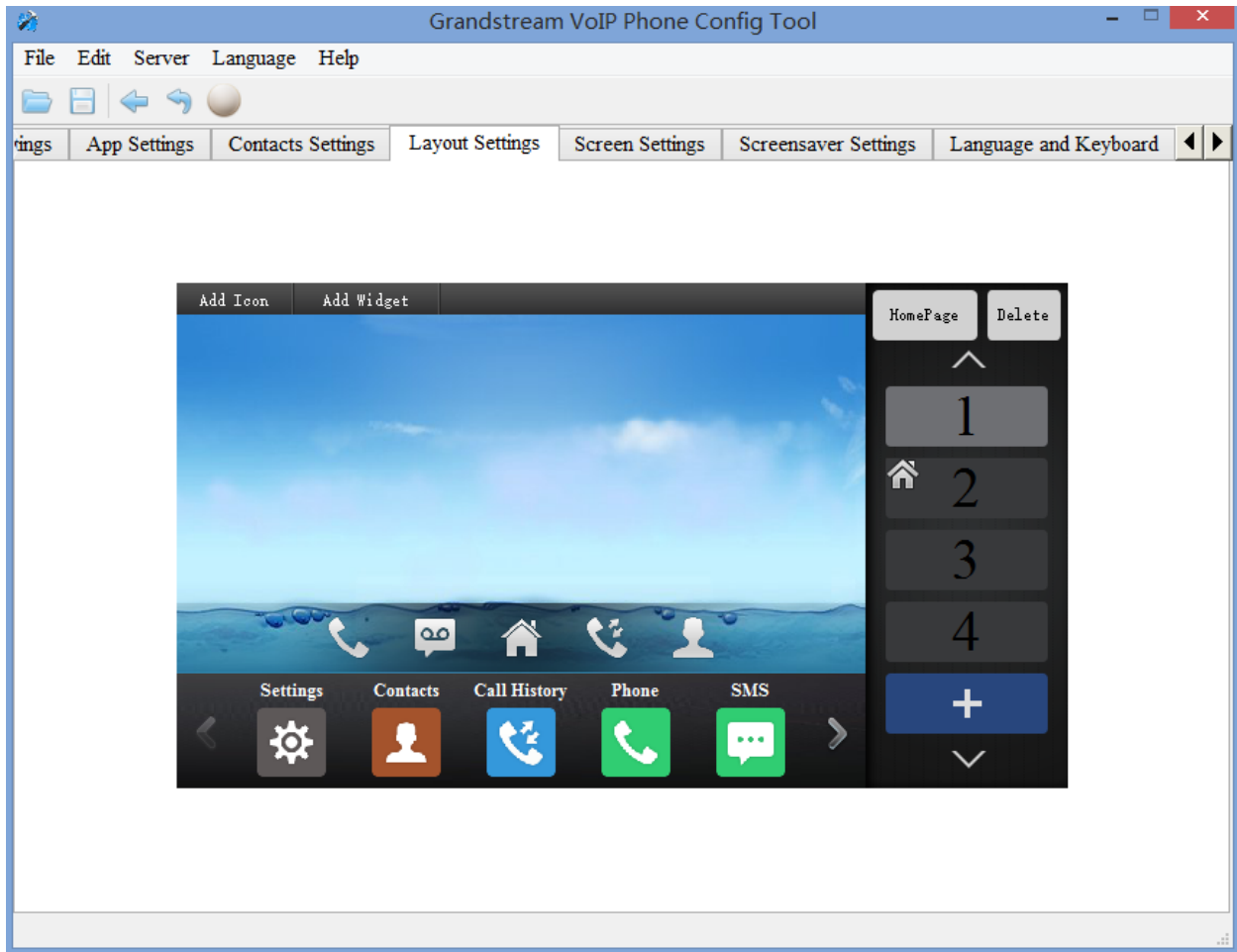


Figure 3: Layout Settings

CONTACTS SETTINGS

The following figure shows the "Contacts Settings" section on the Config Tool. As can be seen, in this section, parameters for phonebook download such as Download Mode, URL and Update-Interval can be set up for the GXV3240.

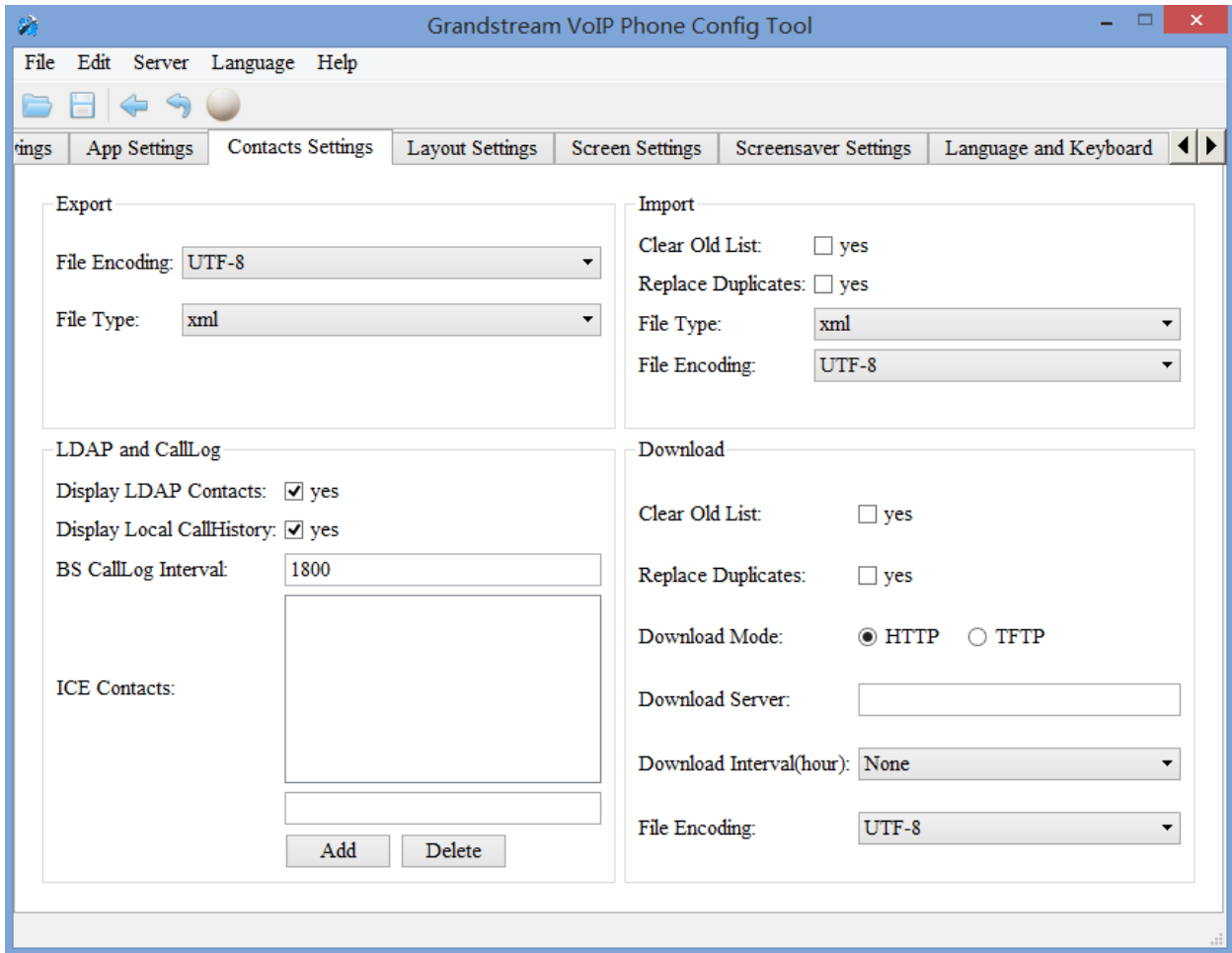


Figure 4: Contacts Interface

SCRENSAVER SETTINGS

The following figure shows the "Screen Display Setting" section on the Config Tool. Users could customize the screen saver and background image on the idle screens for GXV3240.

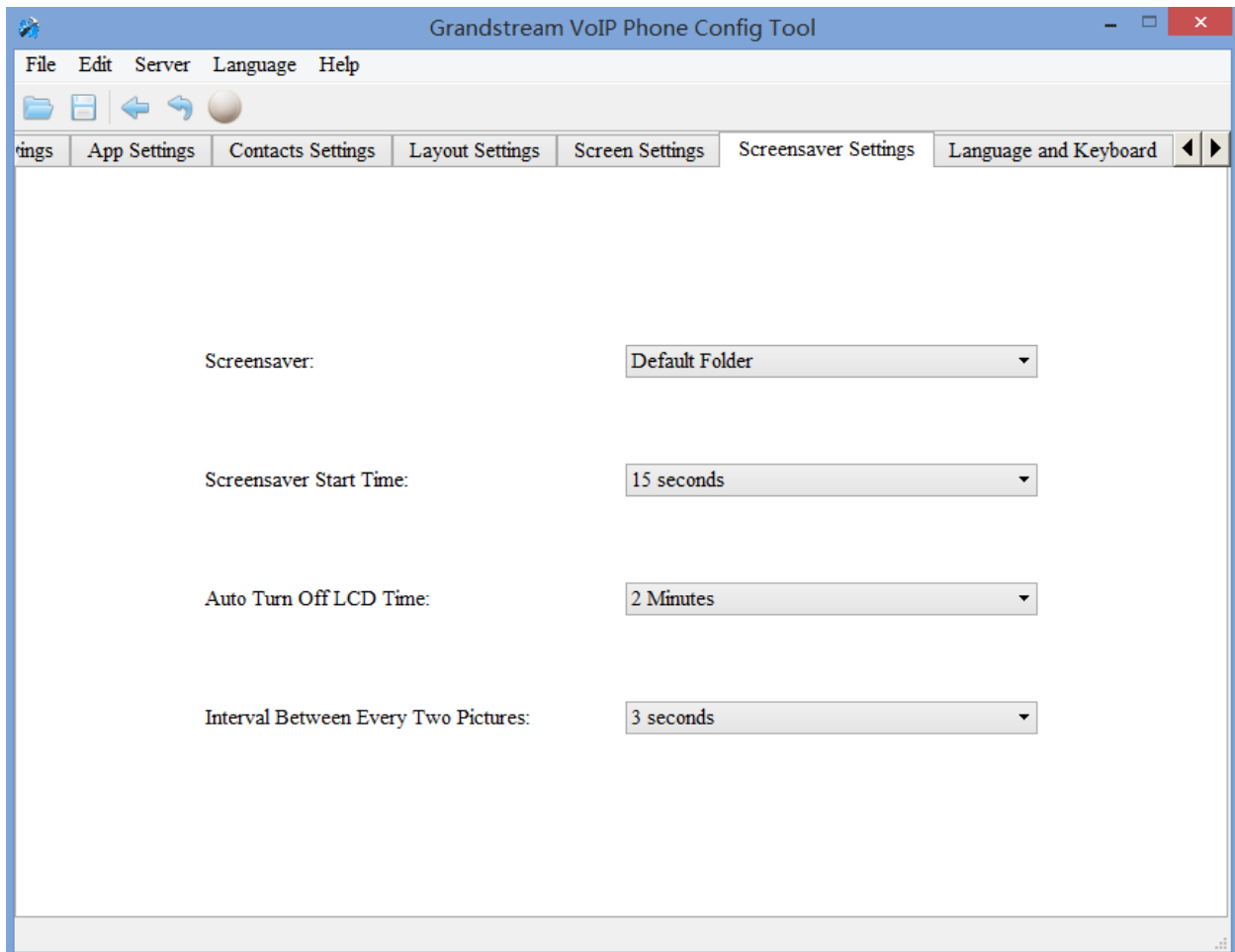


Figure 5: Screensaver Settings

LANGUAGE AND KEYBOARD SETTING

The following figure shows the "Language and Keyboard Settings" section on the Config Tool. Users could select display languages and input method.

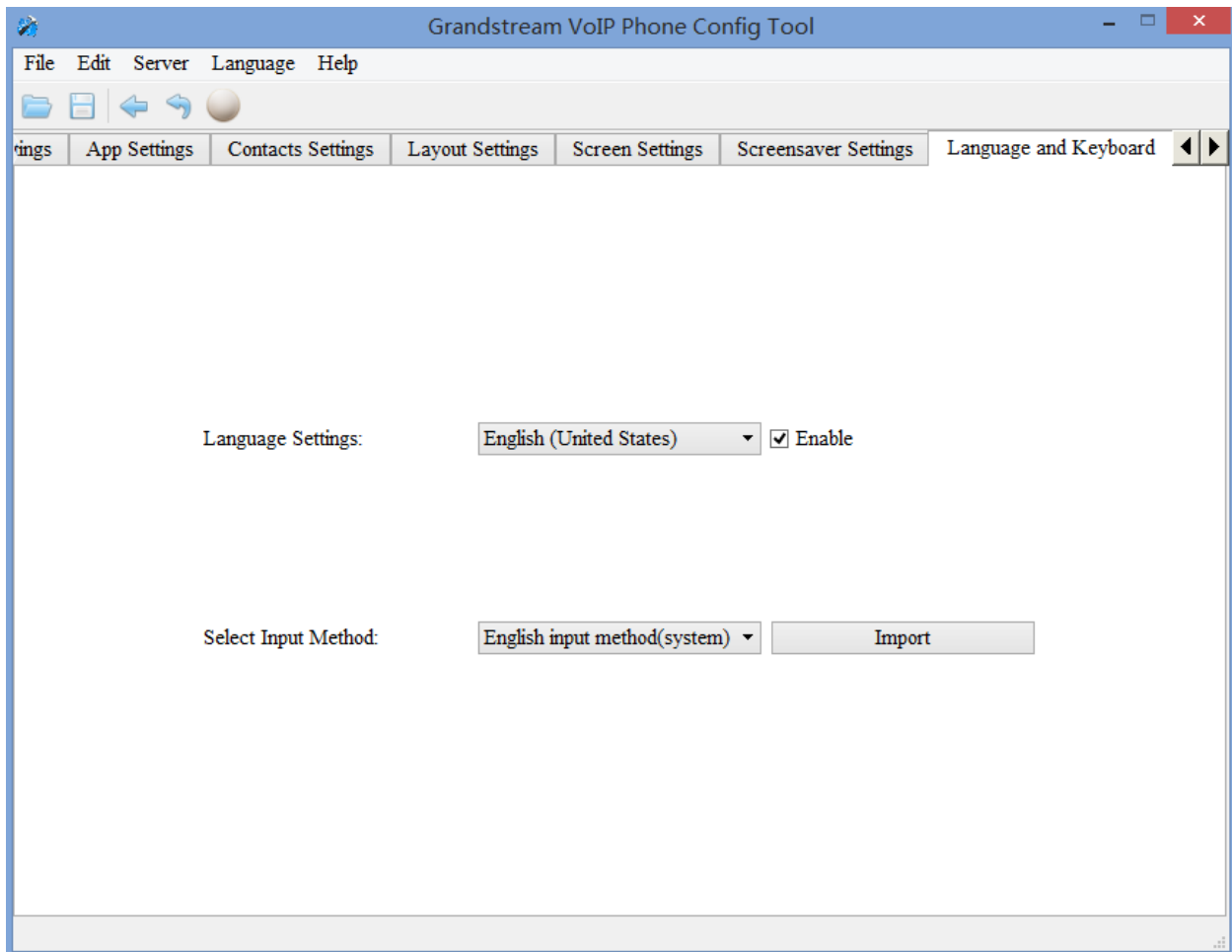


Figure 6: Language and Keyboard Settings

SCREEN SETTINGS

The following figure shows the "Screen Settings" section on the Config Tool. Users could select screen image.

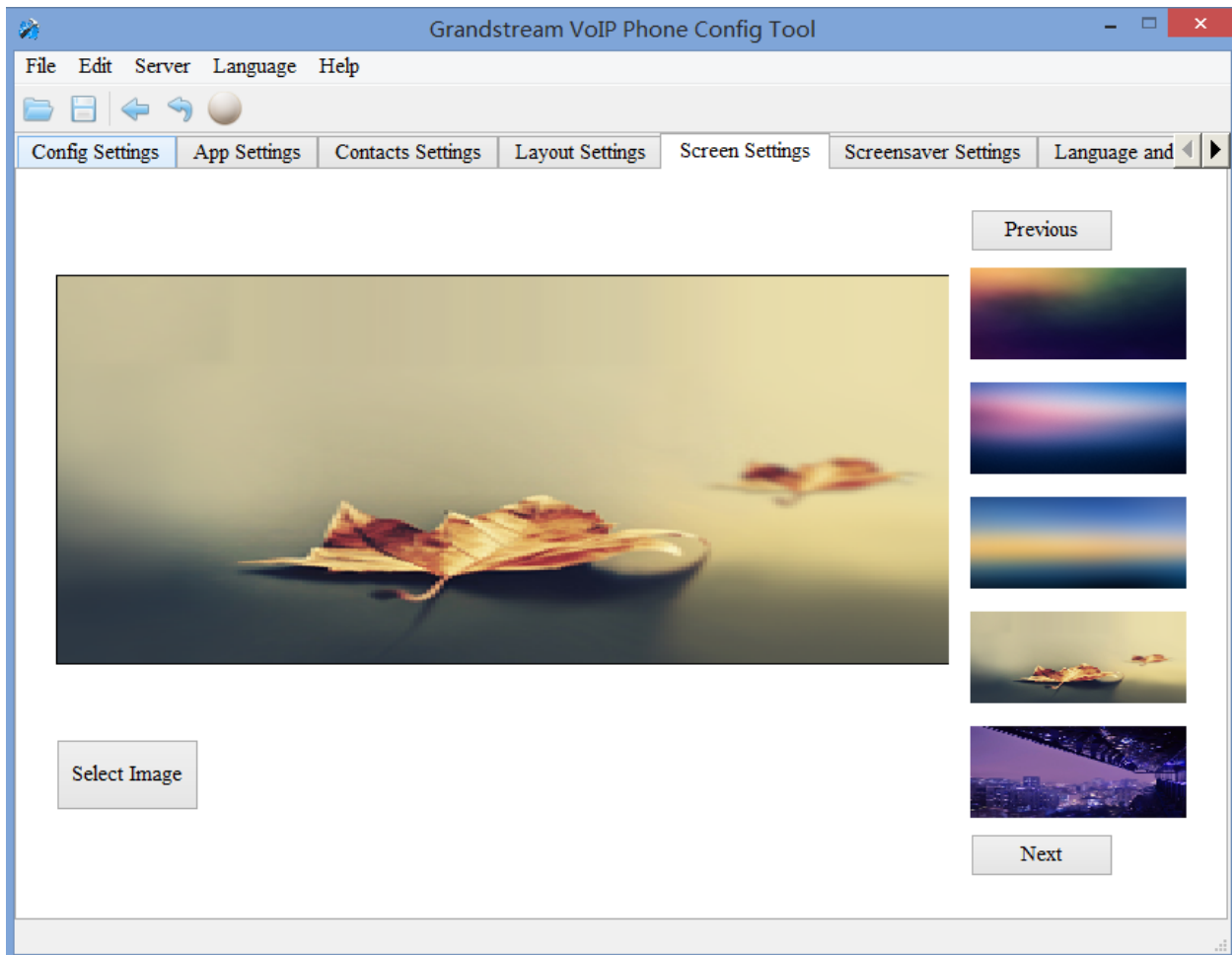


Figure 7: Screen Settings

OTHER SETTINGS

The following figure shows the "Other Settings" section on the Config Tool. Users could change the order of items in System Settings.

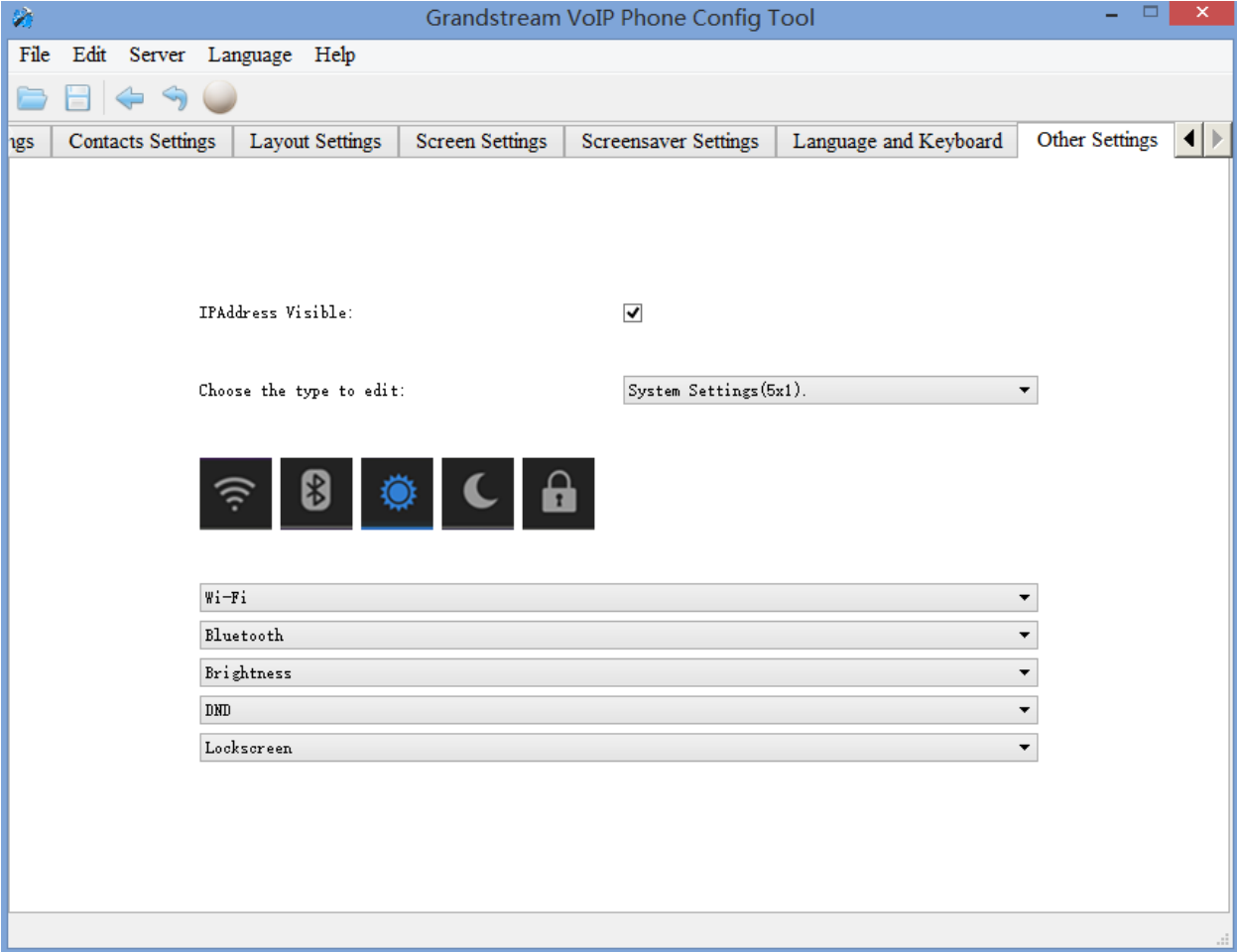


Figure 8: Other Settings