

GS Upgrade Utility Release Note

Table of Content

Table of Content	1
VERSION 1.0.0.16	2
PRODUCT NAME	2
DATE	2
SUMMARY OF UPDATE	2
ENHANCEMENT	2
NEW FEATURES OVERVIEW	3
LOG DISPLAY	3
VERSION 1.0.0.15	4
PRODUCT NAME	4
DATE	4
SUMMARY OF UPDATE	4
ENHANCEMENT	4
NEW FEATURES OVERVIEW	5
HIDDEN PASSWORD	5
CHECK USER & PASSWORD	5
BUTTON of "CLEAR LOGS"	5
VERSION 1.0.0.14	6
PRODUCT NAME	6
DATE	6
SUMMARY	6

VERSION 1.0.0.16

PRODUCT NAME

GS Upgrade Utility Tool (Free)

DATE

10/18/2018

SUMMARY OF UPDATE

The main purpose of this release is enhancement.

ENHANCEMENT

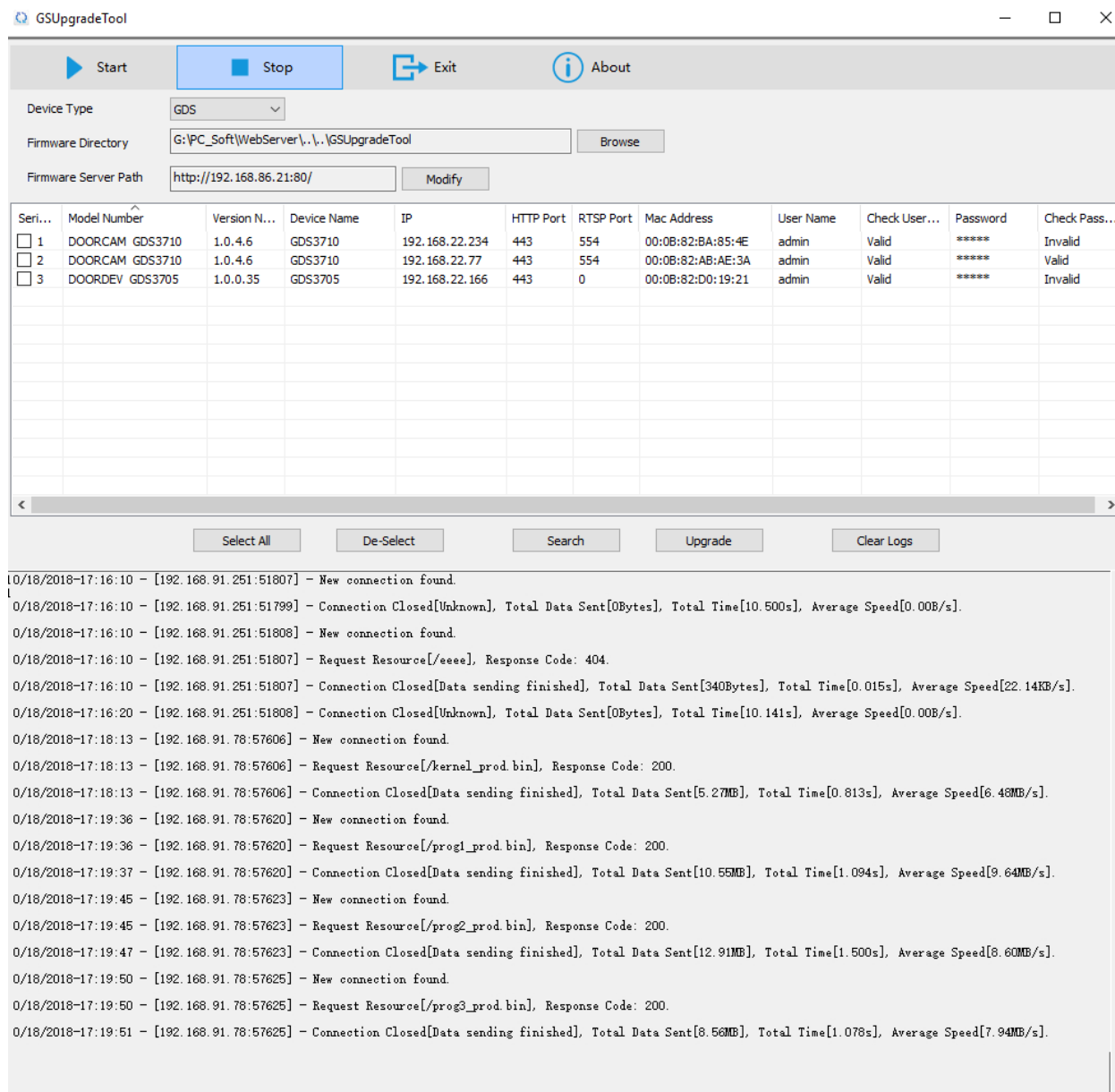
- Added log display during upgrade process.
- Added display the name of pending download file in the message list.

NEW FEATURES OVERVIEW

This section lists major new features or improvement and describes how to use it from the user's point of view.

LOG DISPLAY

Added log and display the name of pending download files in the message list, to help users view the upgrade progress and know the upgrade status.



The screenshot shows the GSUpgradeTool application window. At the top, there are buttons for Start, Stop, Exit, and About. Below these are input fields for Device Type (set to GDS), Firmware Directory (G:\PC_Soft\WebServer\...\GSUpgradeTool), and Firmware Server Path (http://192.168.86.21:80/). A table lists three devices: DOORCAM GDS3710, DOORCAM GDS3710, and DOORDEV GDS3705. Below the table are buttons for Select All, De-Select, Search, Upgrade, and Clear Logs. The bottom section displays a log of network activity, including connection found, connection closed, and resource requests.

Seri...	Model Number	Version N...	Device Name	IP	HTTP Port	RTSP Port	Mac Address	User Name	Check User...	Password	Check Pass...
<input type="checkbox"/> 1	DOORCAM GDS3710	1.0.4.6	GDS3710	192.168.22.234	443	554	00:08:82:BA:85:4E	admin	Valid	*****	Invalid
<input type="checkbox"/> 2	DOORCAM GDS3710	1.0.4.6	GDS3710	192.168.22.77	443	554	00:08:82:AB:AE:3A	admin	Valid	*****	Valid
<input type="checkbox"/> 3	DOORDEV GDS3705	1.0.0.35	GDS3705	192.168.22.166	443	0	00:08:82:D0:19:21	admin	Valid	*****	Invalid

```

0/18/2018-17:16:10 - [192.168.91.251:51807] - New connection found.
0/18/2018-17:16:10 - [192.168.91.251:51799] - Connection Closed[Unknown], Total Data Sent[0Bytes], Total Time[10.500s], Average Speed[0.00B/s].
0/18/2018-17:16:10 - [192.168.91.251:51808] - New connection found.
0/18/2018-17:16:10 - [192.168.91.251:51807] - Request Resource[/eeee], Response Code: 404.
0/18/2018-17:16:10 - [192.168.91.251:51807] - Connection Closed[Data sending finished], Total Data Sent[340Bytes], Total Time[0.015s], Average Speed[22.14KB/s].
0/18/2018-17:16:20 - [192.168.91.251:51808] - Connection Closed[Unknown], Total Data Sent[0Bytes], Total Time[10.141s], Average Speed[0.00B/s].
0/18/2018-17:18:13 - [192.168.91.78:57606] - New connection found.
0/18/2018-17:18:13 - [192.168.91.78:57606] - Request Resource[/kernel_prod.bin], Response Code: 200.
0/18/2018-17:18:13 - [192.168.91.78:57606] - Connection Closed[Data sending finished], Total Data Sent[5.27MB], Total Time[0.813s], Average Speed[6.48MB/s].
0/18/2018-17:19:36 - [192.168.91.78:57620] - New connection found.
0/18/2018-17:19:36 - [192.168.91.78:57620] - Request Resource[/prog1_prod.bin], Response Code: 200.
0/18/2018-17:19:37 - [192.168.91.78:57620] - Connection Closed[Data sending finished], Total Data Sent[10.55MB], Total Time[1.094s], Average Speed[9.64MB/s].
0/18/2018-17:19:45 - [192.168.91.78:57623] - New connection found.
0/18/2018-17:19:45 - [192.168.91.78:57623] - Request Resource[/prog2_prod.bin], Response Code: 200.
0/18/2018-17:19:47 - [192.168.91.78:57623] - Connection Closed[Data sending finished], Total Data Sent[12.91MB], Total Time[1.500s], Average Speed[8.60MB/s].
0/18/2018-17:19:50 - [192.168.91.78:57625] - New connection found.
0/18/2018-17:19:50 - [192.168.91.78:57625] - Request Resource[/prog3_prod.bin], Response Code: 200.
0/18/2018-17:19:51 - [192.168.91.78:57625] - Connection Closed[Data sending finished], Total Data Sent[8.56MB], Total Time[1.078s], Average Speed[7.94MB/s].
  
```

VERSION 1.0.0.15

PRODUCT NAME

GS Upgrade Utility Tool (Free)

DATE

05/11/2018

SUMMARY OF UPDATE

The main purpose of this release is enhancement.

ENHANCEMENT

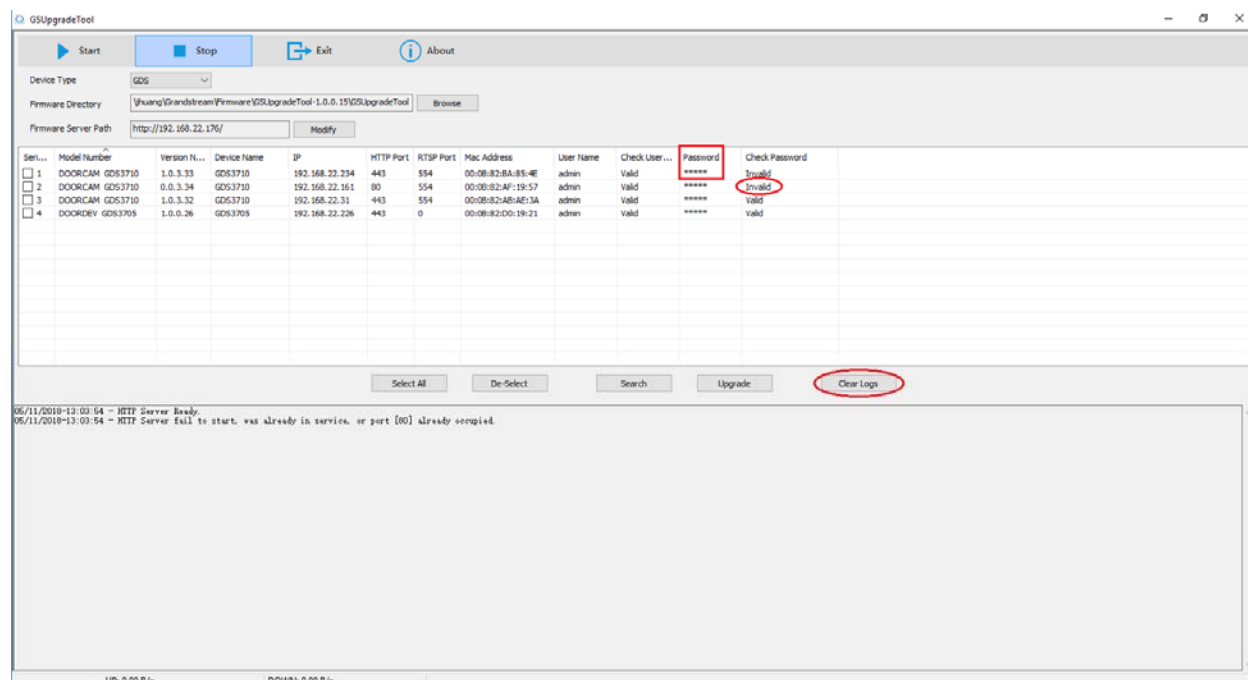
- Hidden password and display them via "*****".
- Added check the correctness of User Name and Password, will display "Invalid" if mismatch and not synchronized with the founded device to remind user to change and match them.
- Added "Clear Logs" button to clear the displayed logs.

NEW FEATURES OVERVIEW

This section lists major new features or improvement and describes how to use it from the user's point of view.

HIDDEN PASSWORD

When the program searching the device in same LAN (currently VLAN not supported due to searching device is via broadcasting packets), the founded device User Name and Password will be displayed but the password will be displayed via "*****" for security reason.



CHECK USER & PASSWORD

The incorrect User Name and/or Password will be displayed with "Invalid" in the related field. This is to notify user to correct them and make them synchronized between the Tool and the GDS device before doing firmware upgrade. Otherwise the firmware upgrade process will fail and device will not get upgraded.

BUTTON of "CLEAR LOGS"

Added "Clear Logs" button in the UI. Click the button will clear the logs displayed. This will help user to have a clean interface if having multiple device and want to upgrade the device one by one.

VERSION 1.0.0.14

PRODUCT NAME

GDSManager Management Utility Software (Free)

DATE

04/26/2018

SUMMARY

Initial Version of the Utility Tool for users to upgrade GDS37xx and IP Camera firmware locally to avoid bricking the device due to network or power interruption at the upgrade process.