



# Grandstream Networks, Inc.

---

GXV3175 IP Multimedia Phone

GUI Customization Guide



**TABLE OF CONTENTS**  
GXV3175 GUI CUSTOMIZATION GUIDE

**Introduction ..... 1**

    OVERVIEW ..... 1

    HOW TO USE ..... 1

**Configuration Guide ..... 2**

    CONFIG SETTING ..... 2

    APP SETTING ..... 3

    SYSTEM SETTING ..... 4

    PHONEBOOK SETTING ..... 5

    LAYOUT SETTING ..... 6

    SCREEN SETTING ..... 7

    ACCOUNT SETTING ..... 8

    SCREEN SAVER SETTING ..... 9

    MAINTENANCE SETTING ..... 10

**TABLE OF FIGURES**  
GXV3175 GUI CUSTOMIZATION GUIDE

Figure 1: Config Setting Interface ..... 2

Figure 2: App Setting Interface ..... 3

Figure 3: System Setting Interface ..... 4

Figure 4: Phonebook Setting Interface ..... 5

Figure 5: Layout Setting Interface ..... 6

Figure 6: Screen Setting Interface ..... 7

Figure 7: Account Setting Interface ..... 8

Figure 8: Screen Saver Setting Interface ..... 9

Figure 9: Maintenance Setting Interface ..... 10

# INTRODUCTION

## OVERVIEW

Grandstream GXV3175 IP Multimedia Phone allows users to customize the GUI desktop layout as well as GUI configurations on the phone, offering users with flexibility and control. The GUI configuration includes display/hide certain applications, configure parameters on the phone with specific configuration items, control the display appearance and enable/disable some applications and much more.

This document describes how to use the Grandstream Graphical GUI Customization Tool to customize the GXV3175 GUI settings and applications. This tool allows users to do the following on applications running on GXV3175:

- Turn on/off applications
- Set up parameters
- Personalize phone display
- Turn on/off certain functions on applications

The Grandstream Graphical GUI Customization Tool is available for download from the following link:

[http://www.grandstream.com/products/gxv\\_series/gxv3175/resources/gxv31xx\\_gui\\_customization\\_tool\\_v2.0.zip](http://www.grandstream.com/products/gxv_series/gxv3175/resources/gxv31xx_gui_customization_tool_v2.0.zip)

## HOW TO CUSTOMIZE GXV3175 LCD GUI

1. Unzip the tool package. Double click on “Grandstream VoIP Phone Config Tool.exe” to start up the tool. Single click on GXV3175 picture to get into the GXV3175 GUI customization interface.
2. Set up the parameters and application configurations.
3. Generate the GXV3175 custom file “gxv3170cust” by clicking on “File → Save As”. The tool also allows users to read and edit the existing custom files.
4. Put the generated custom file “gxv3170cust” on your HTTP/TFTP/HTTPS server.
5. Point the phone's firmware upgrade path to the directory on the server where the custom file locates.
6. Reboot the phone to trigger the upgrade.
7. After booting up, GXV3175 LCD shall display the customized GUI.

## CONFIGURATION GUIDE

### CONFIG SETTING

The following figure shows the "Config Setting" section on the GUI Config Tool. Users could enable or disable the specific configuration setting here for the GXV3175. Basically, it allows users to select the settings to be used on the phone.

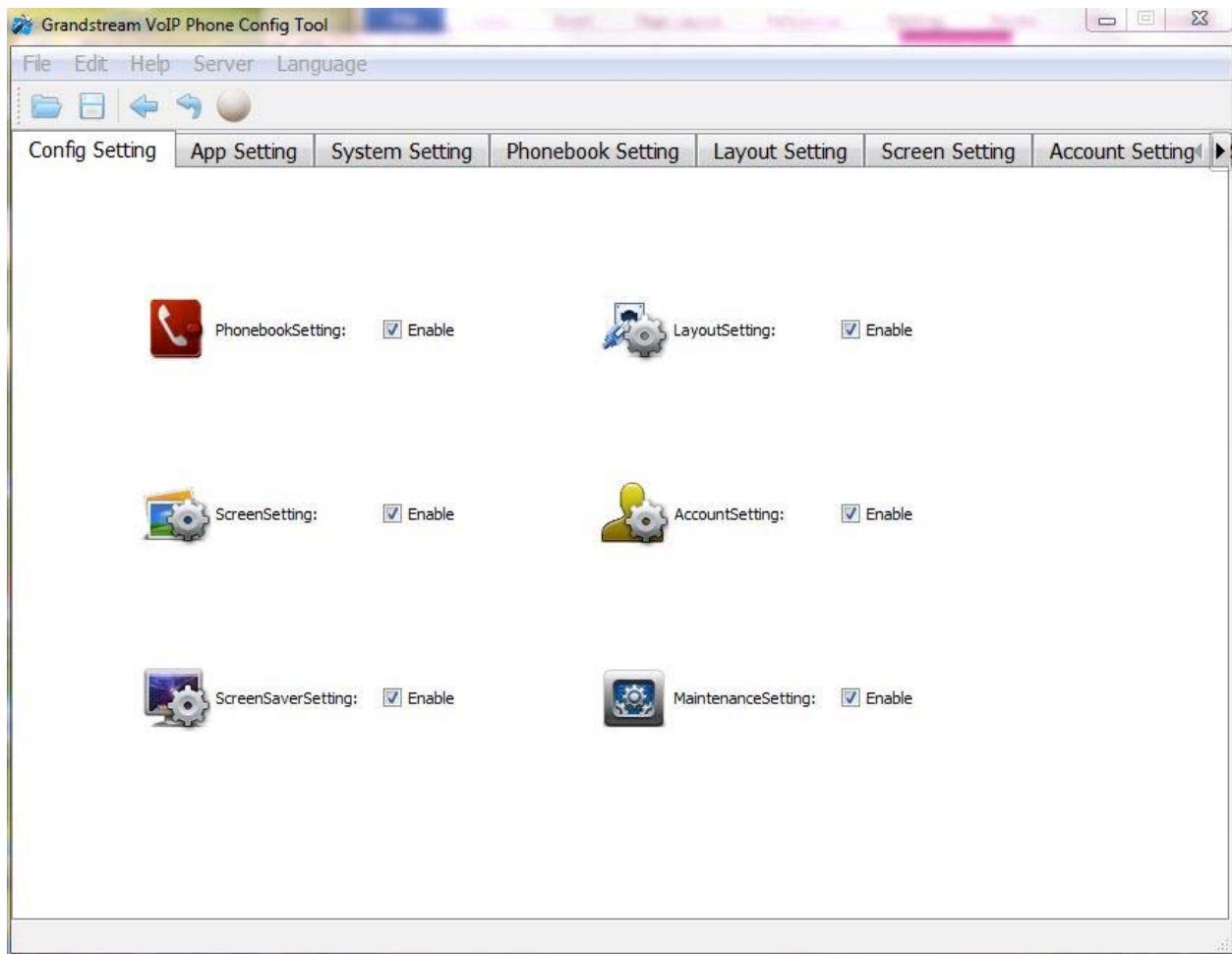
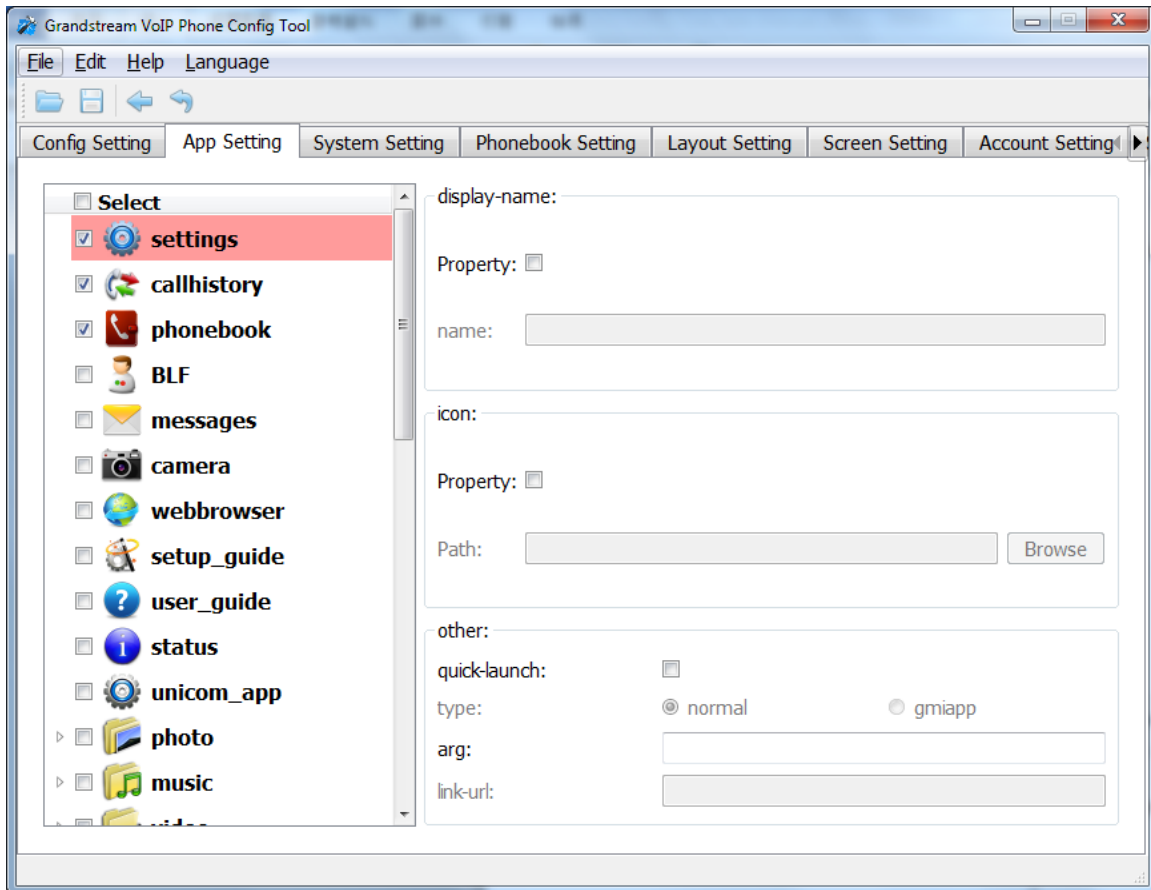


Figure 1: Config Setting Interface

## APP SETTING

The following figure shows the "App Setting" section on the Config Tool.



**Figure 2: App Setting Interface**

In this section, users could configure the following:

- Edit menu layout structure
- Enable or disable specific application
- Edit options to be displayed on GUI interface for a specific application, which includes icon and text for description purpose. (Default settings will be applied if there is no change made)
- Add submenu or link by right-clicking on the left panel list

**Note:**

On the left panel list, "Settings", "Callhistory" and "Phonebook" are mandatory.

## SYSTEM SETTING

The following figure shows the "System Setting" section on the Config Tool. By clicking on the checkbox for each item, users could enable or disable the corresponding setting under GXV3175 "System Setting" menu.

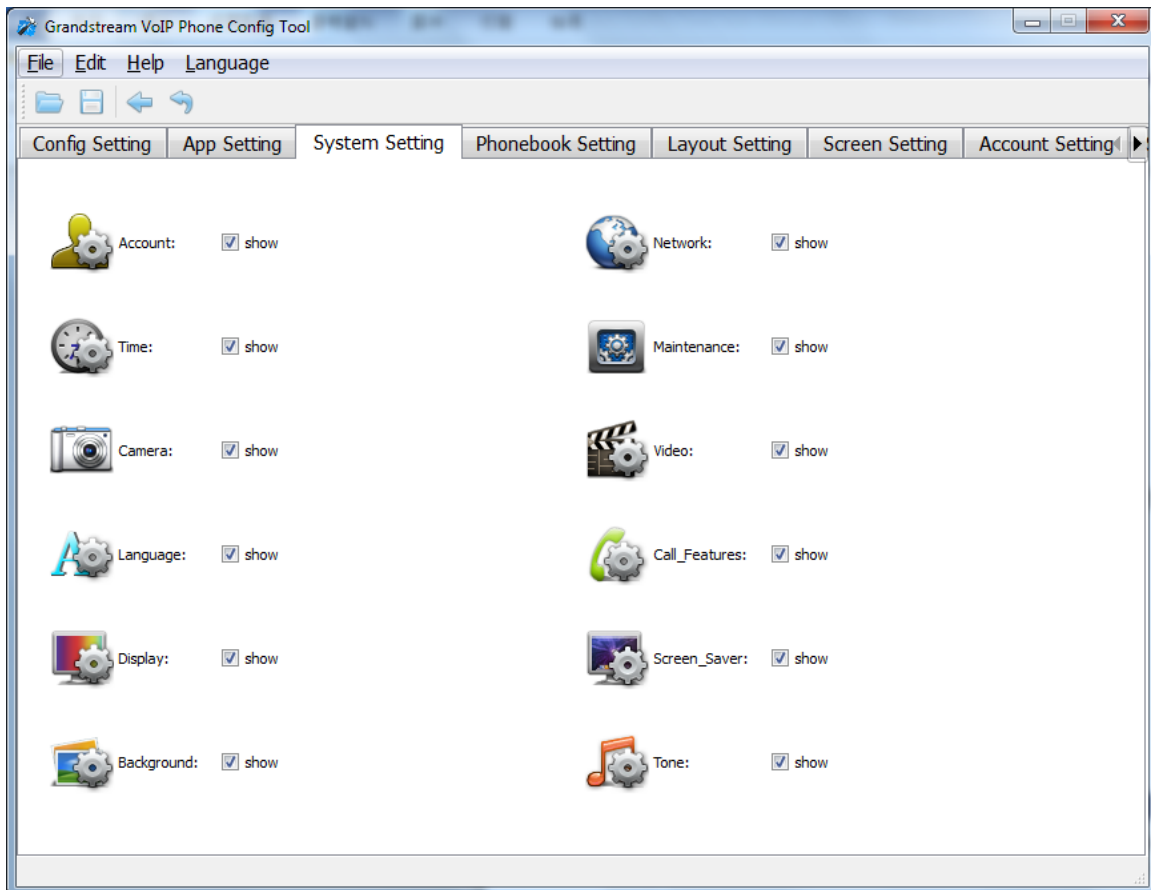


Figure 3: System Setting Interface

## PHONEBOOK SETTING

The following figure shows the "Phonebook Setting" section on the Config Tool. As can be seen, in this section, parameters for phonebook download (Mode, URL and etc), import or export can be set up for the GXV3175.

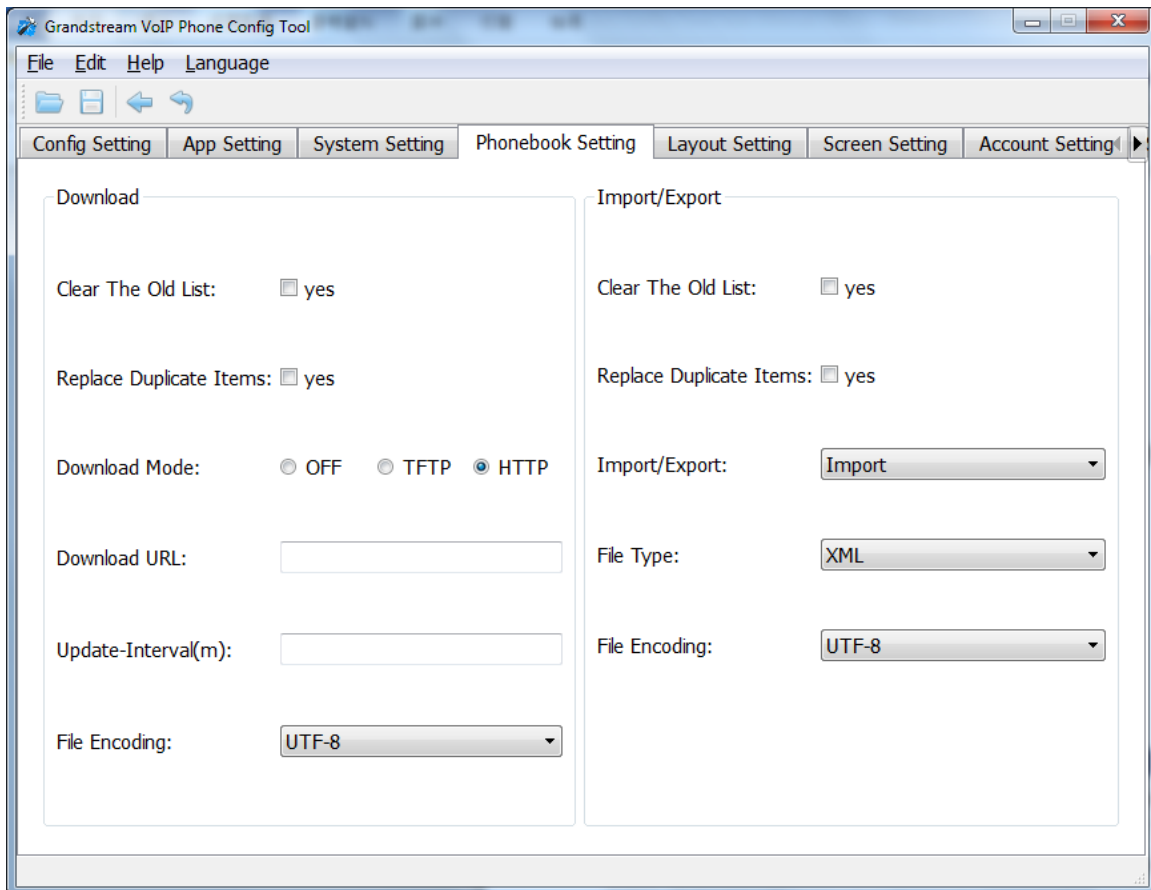


Figure 4: Phonebook Setting Interface

## LAYOUT SETTING

The following figure shows the "Layout Setting" section on the Config Tool. Users could customize the following for the GXV3175 desktop layout:

- Directly drag and place the application icons in the bottom list to the desktop as widgets
- Define and tune the x, y coordinates after placing the widgets
- Right-click on the widgets to remove it from the desktop

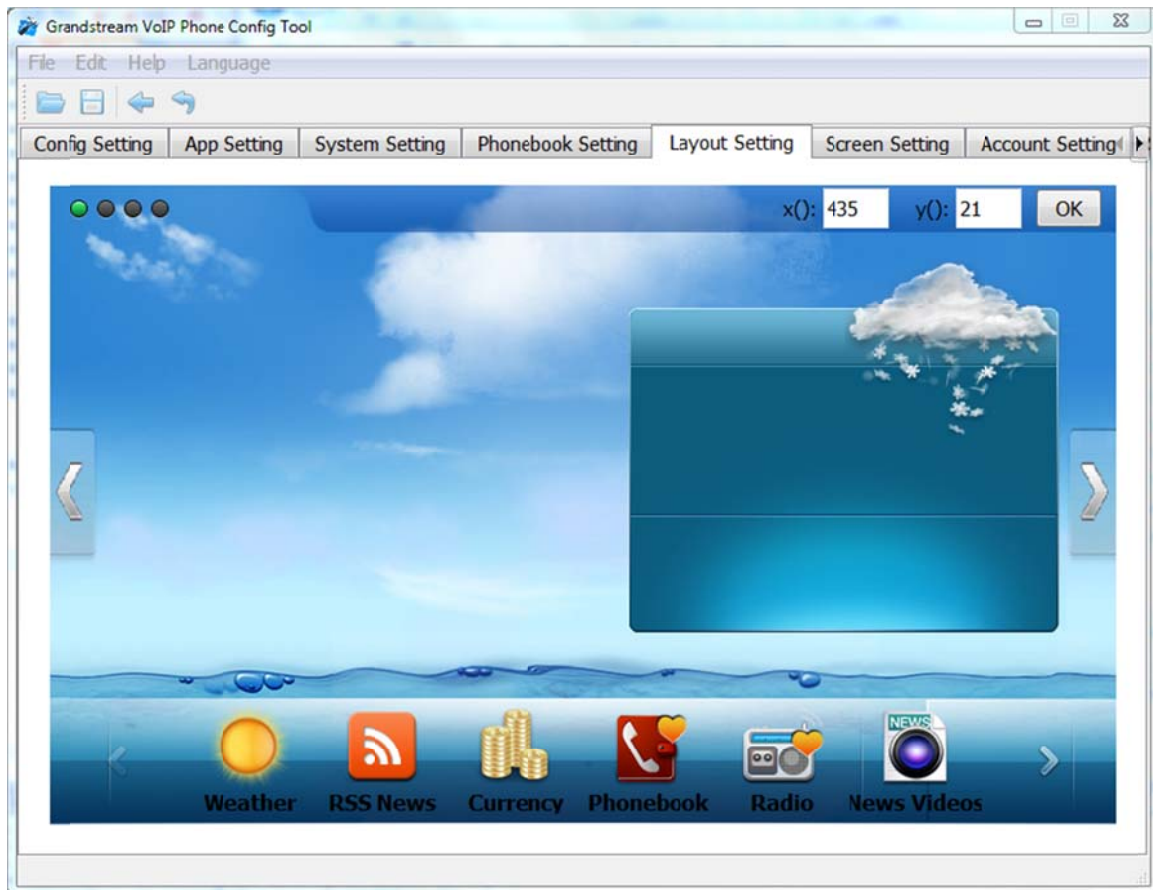
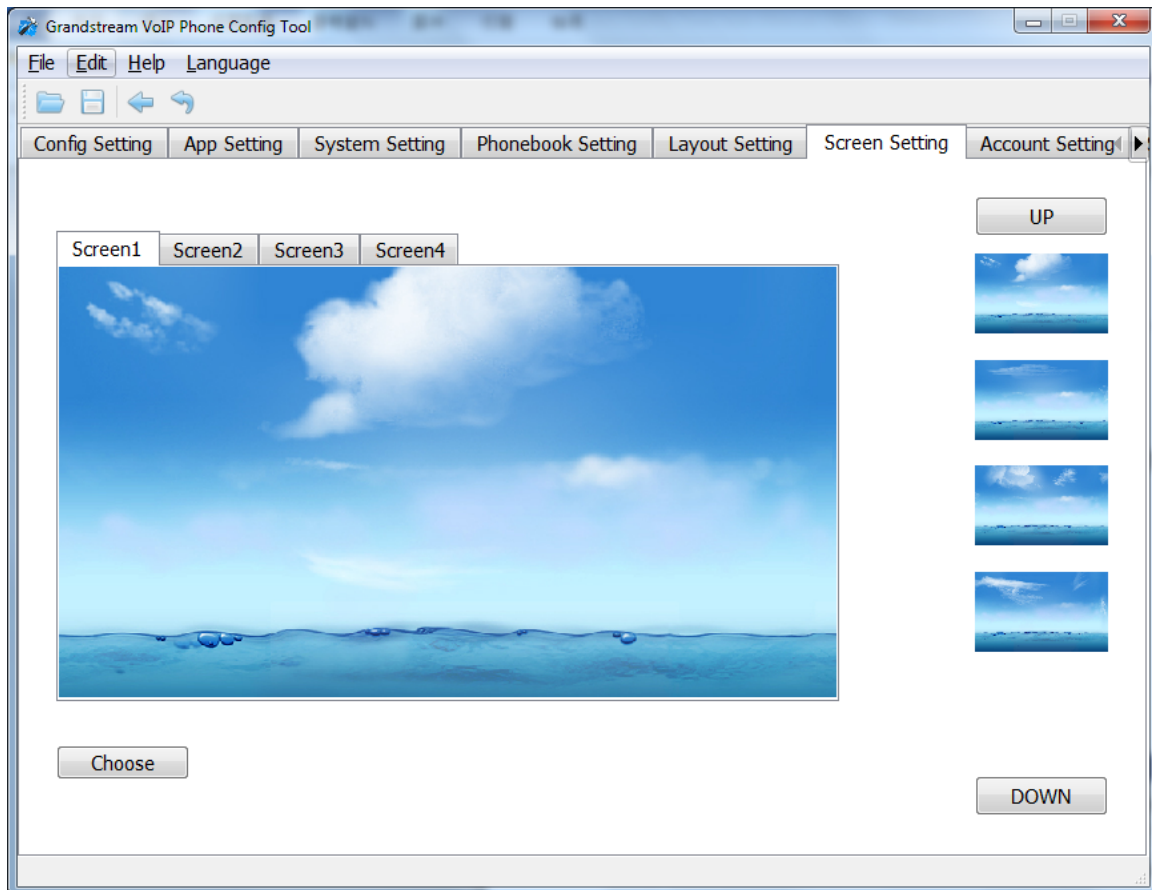


Figure 5: Layout Setting Interface

## SCREEN SETTING

The following figure shows the "Screen Setting" section on the Config Tool. Users could customize the background image on the four idle screens for GXV3175.

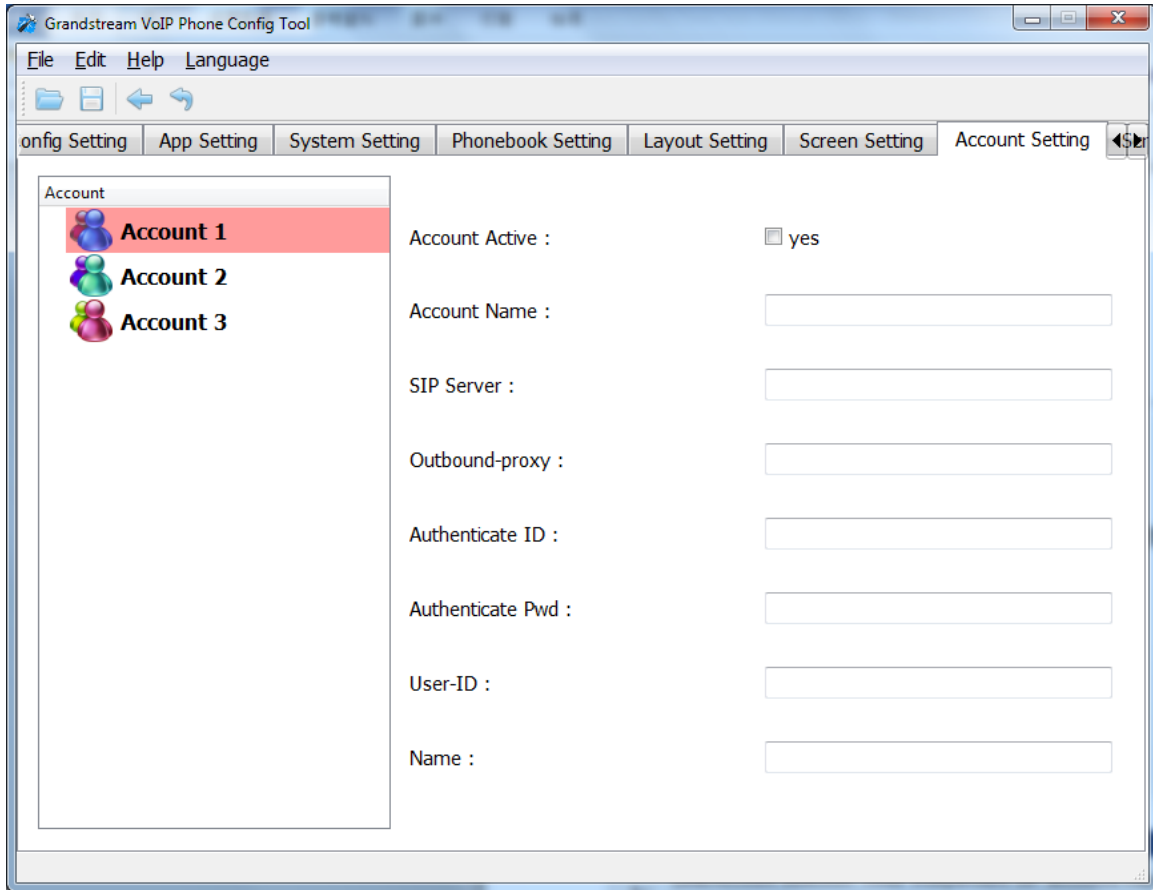
- Click Up or Down to select the image for each screen
- Click on Choose to import images from local directory



**Figure 6: Screen Setting Interface**

## ACCOUNT SETTING

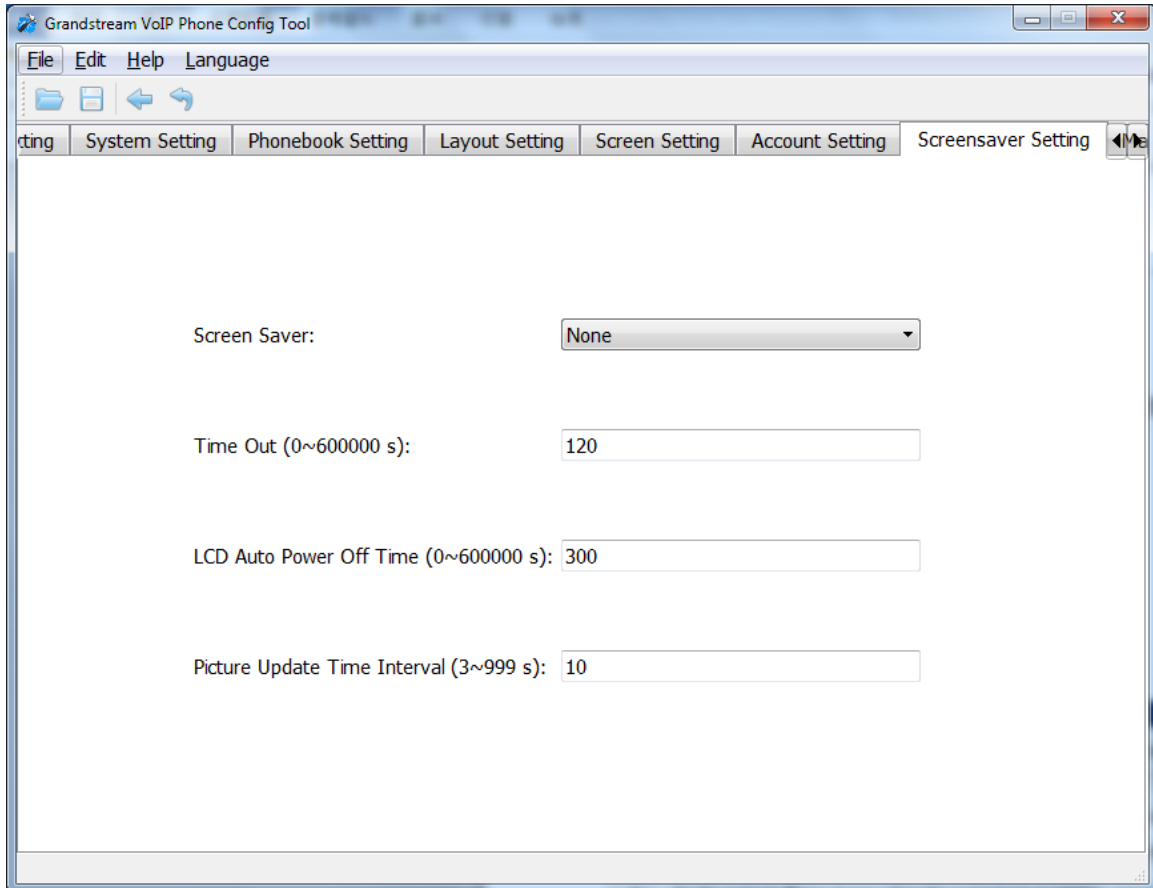
The following figure shows the "Account Setting" section on the Config Tool. Users could enter the account information here to register the account on GXV3175.



**Figure 7: Account Setting Interface**

## SCREEN SAVER SETTING

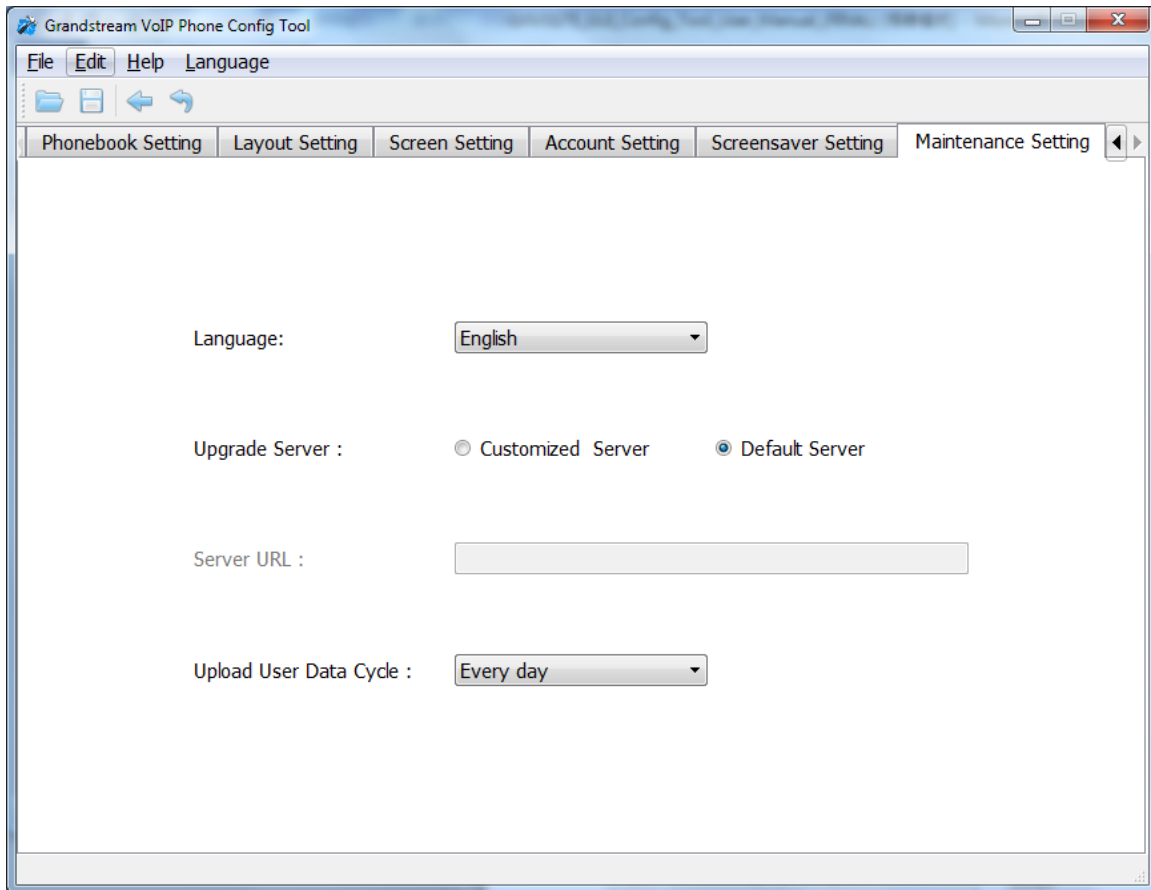
The following figure shows the "Screen Saver Setting" section on the Config Tool.



**Figure 8: Screen Saver Setting Interface**

## MAINTENANCE SETTING

The following figure shows the "Maintenance Setting" section on the Config Tool. Users could select display languages, upgrade server, server URL and upload user data cycle here.



**Figure 9: Maintenance Setting Interface**