



# Grandstream Networks, Inc.

---

## GXV3140 IP Multimedia Phone

### GUI Customization Guide



**TABLE OF CONTENTS**  
GXV3140 GUI CUSTOMIZATION GUIDE

<b>Introduction .....</b>	<b>1</b>
OVERVIEW .....	1
HOW TO CUSTOMIZE GXV3140 LCD GUI.....	1
<b>Configuration Guide .....</b>	<b>2</b>
APP SETTING .....	2
LAYOUT SETTING .....	3
PHONEBOOK SETTING .....	4
ACCOUNT SETTING.....	5
SCREEN DISPLAY SETTING .....	6
MAINTENANCE SETTING .....	7

**TABLE OF FIGURES**  
GXV3140 GUI CUSTOMIZATION GUIDE

Figure 1: App Setting Interface .....	2
Figure 2: Layout Setting Interface.....	3
Figure 3: Phonebook Setting Interface .....	4
Figure 4: Account Setting Interface.....	5
Figure 5: Screen Display Setting Interface .....	6
Figure 6: Maintenance Setting Interface .....	7

# INTRODUCTION

## OVERVIEW

Grandstream GXV3140 IP Multimedia Phone allows users to customize the GUI desktop layout as well as GUI configurations on the phone, offering users with flexibility and control. The GUI configuration includes display/hide certain applications, configure parameters on the phone with specific configuration items, control the display appearance and enable/disable some applications and much more.

This document describes how to use the Grandstream Graphical GUI Customization Tool to customize the GXV3140 GUI settings and applications. This tool allows users to do the following on applications running on GXV3140:

- Turn on/off applications
- Set up parameters
- Personalize phone display
- Turn on/off certain functions on applications

The Grandstream Graphical GUI Customization Tool is available for download from the following link:

[http://www.grandstream.com/products/gxv\\_series/GXV3140/resources/gxv31xx\\_gui\\_customization\\_tool\\_v2.0.zip](http://www.grandstream.com/products/gxv_series/GXV3140/resources/gxv31xx_gui_customization_tool_v2.0.zip)

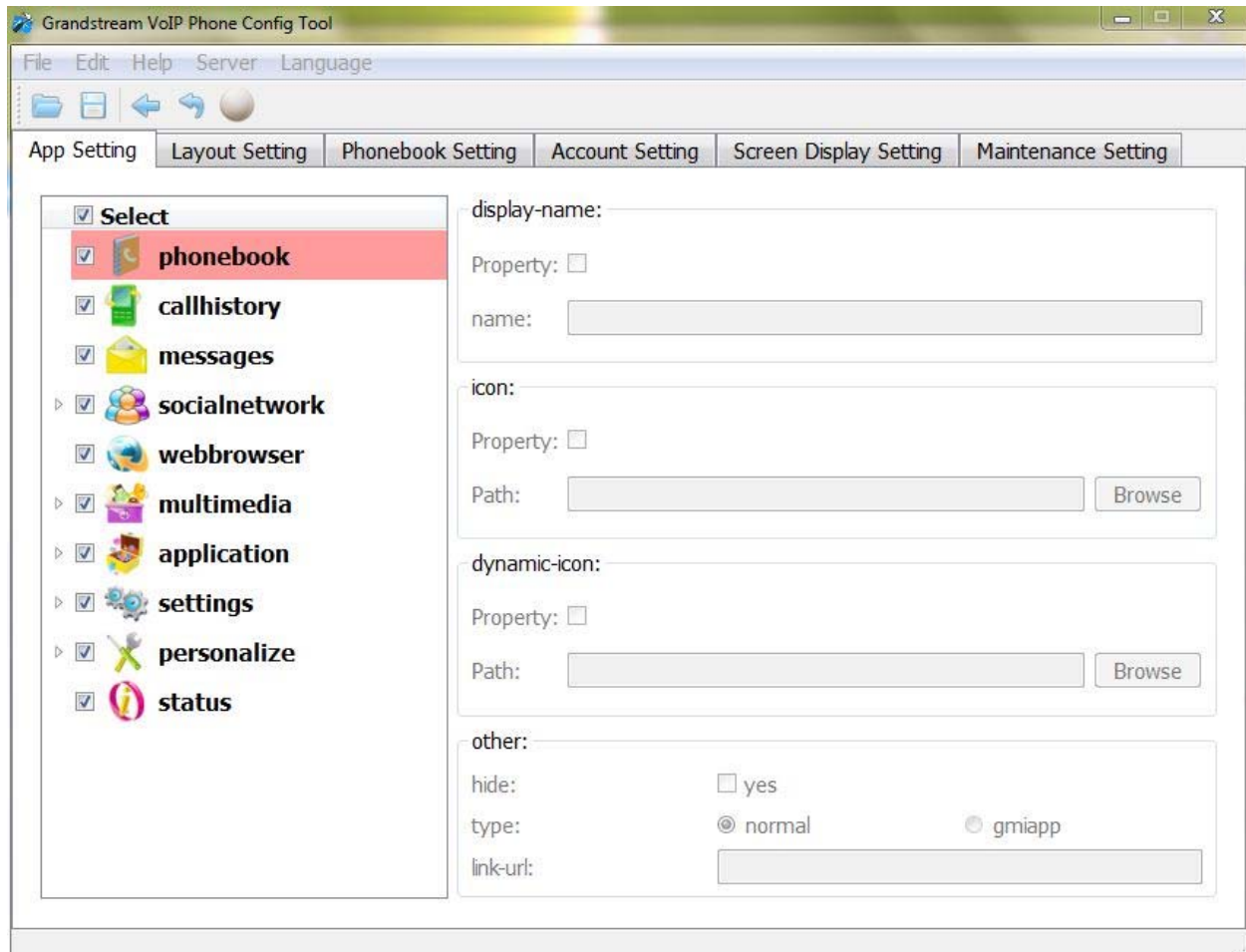
## HOW TO CUSTOMIZE GXV3140 LCD GUI

1. Unzip the tool package. Double click on “Grandstream VoIP Phone Config Tool.exe” to start up the tool. Single click on GXV3140 picture to get into the GXV3140 GUI customization interface.
2. Set up the parameters and application configurations.
3. Generate the GXV3140 custom file “gxv3140cust” by clicking on “File → Save As”. The tool also allows users to read and edit the existing custom files.
4. Put the generated custom file “gxv3140cust” on your HTTP/TFTP/HTTPS server.
5. Point the phone's firmware upgrade path to the directory on the server where the custom file locates.
6. Reboot the phone to trigger the upgrade.
7. After booting up, GXV3140 LCD shall display the customized GUI.

# CONFIGURATION GUIDE

## APP SETTING

The following figure shows the "App Setting" section on the Config Tool.



**Figure 1: App Setting Interface**

In this section, users could configure the following:

- Edit menu layout structure
- Enable or disable specific application
- Edit options to be displayed on GUI interface for a specific application, which includes icon and text for description purpose. (Default settings will be applied if there is no change made)

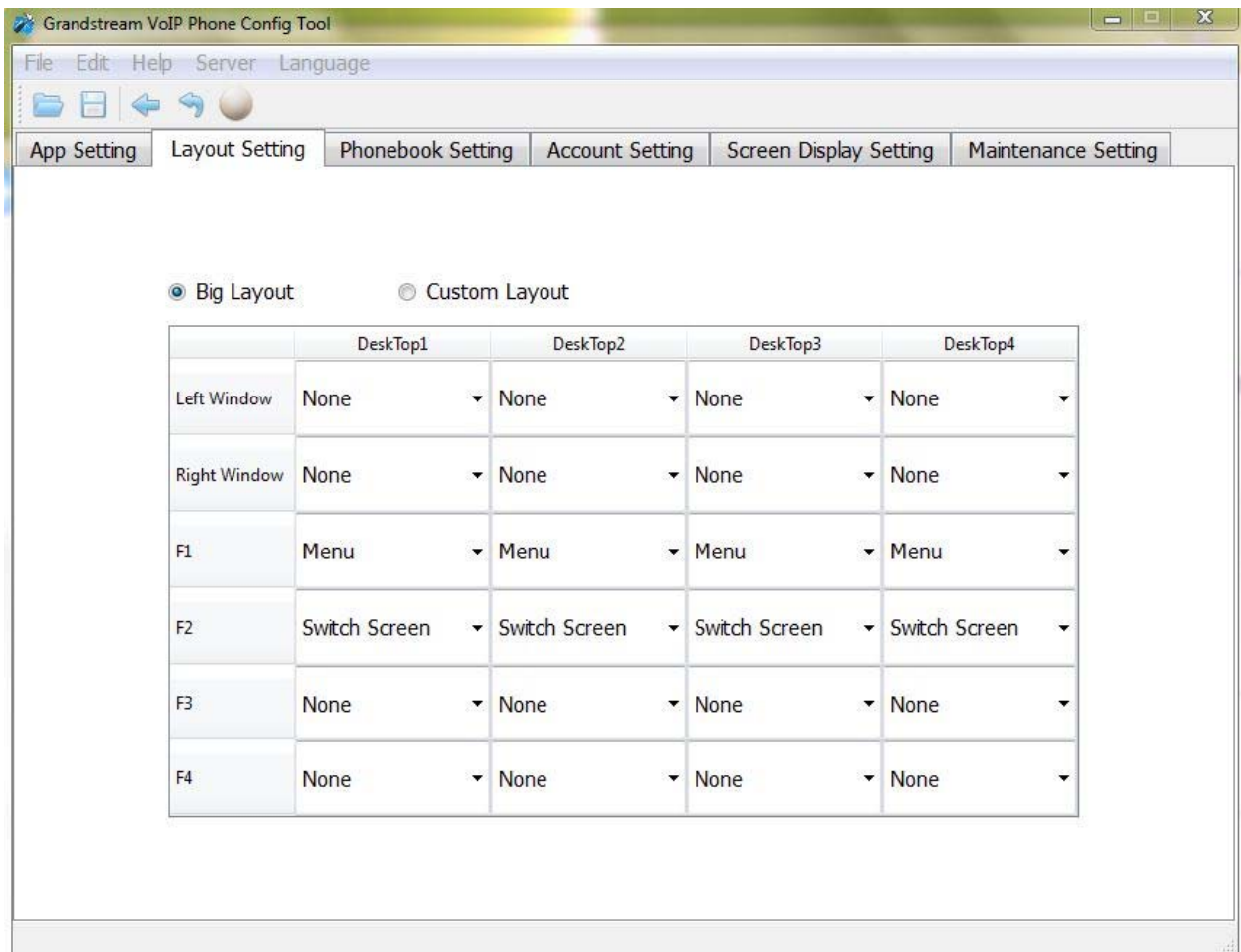
- Add submenu or link by right-clicking on the left panel list

**Note:**

On the left panel list, “Settings”, “Callhistory” and “Phonebook” are mandatory.

## LAYOUT SETTING

The following figure shows the "Layout Setting" section on the Config Tool. Users could customize the following for the GXV3140 desktop layout with either the “Big Layout” configuration or “Custom Layout” file.



**Figure 2: Layout Setting Interface**

## PHONEBOOK SETTING

The following figure shows the "Phonebook Setting" section on the Config Tool. As can be seen, in this section, parameters for phonebook download such as Download Mode, URL and Update-Interval can be set up for the GXV3140.

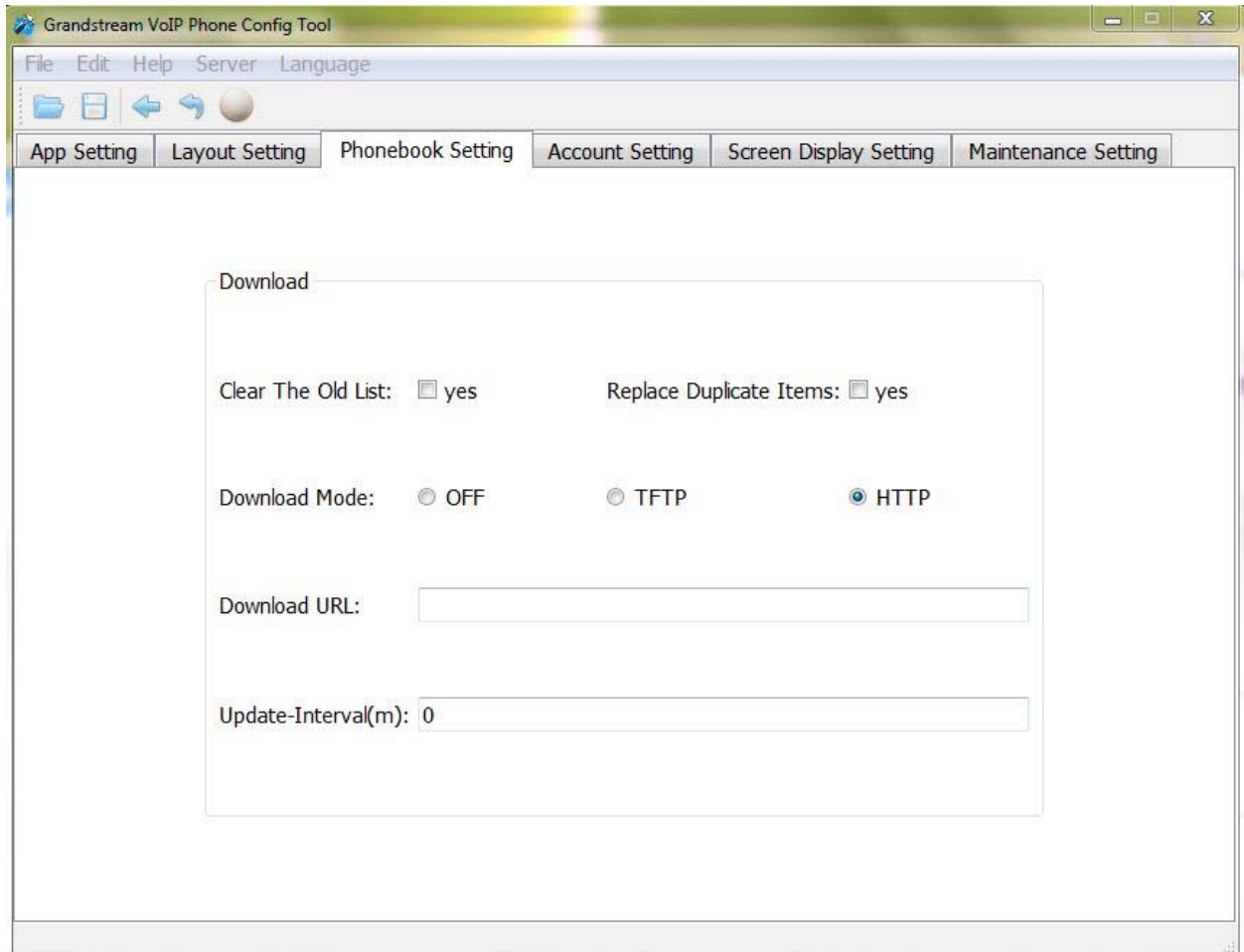
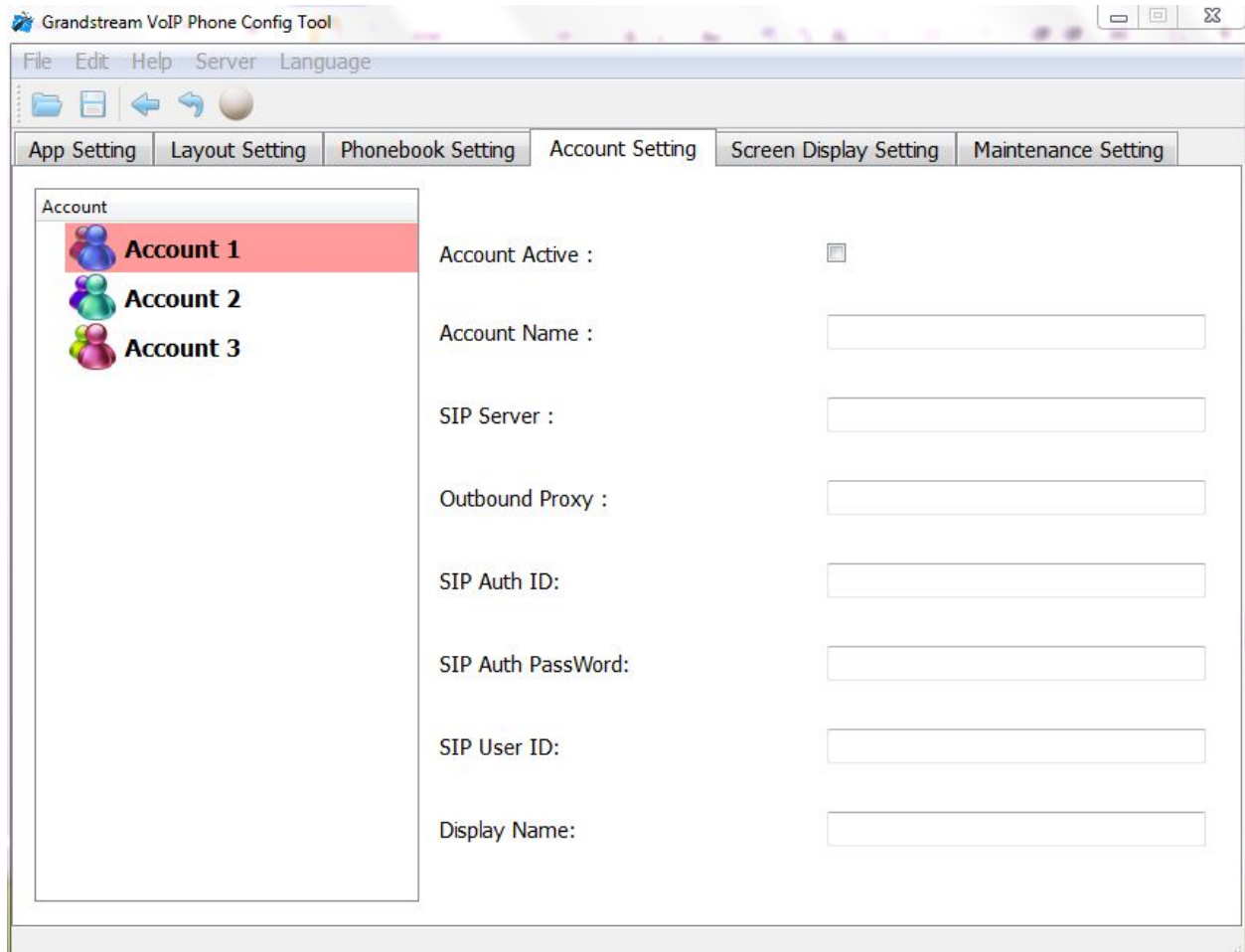


Figure 3: Phonebook Setting Interface

## ACCOUNT SETTING

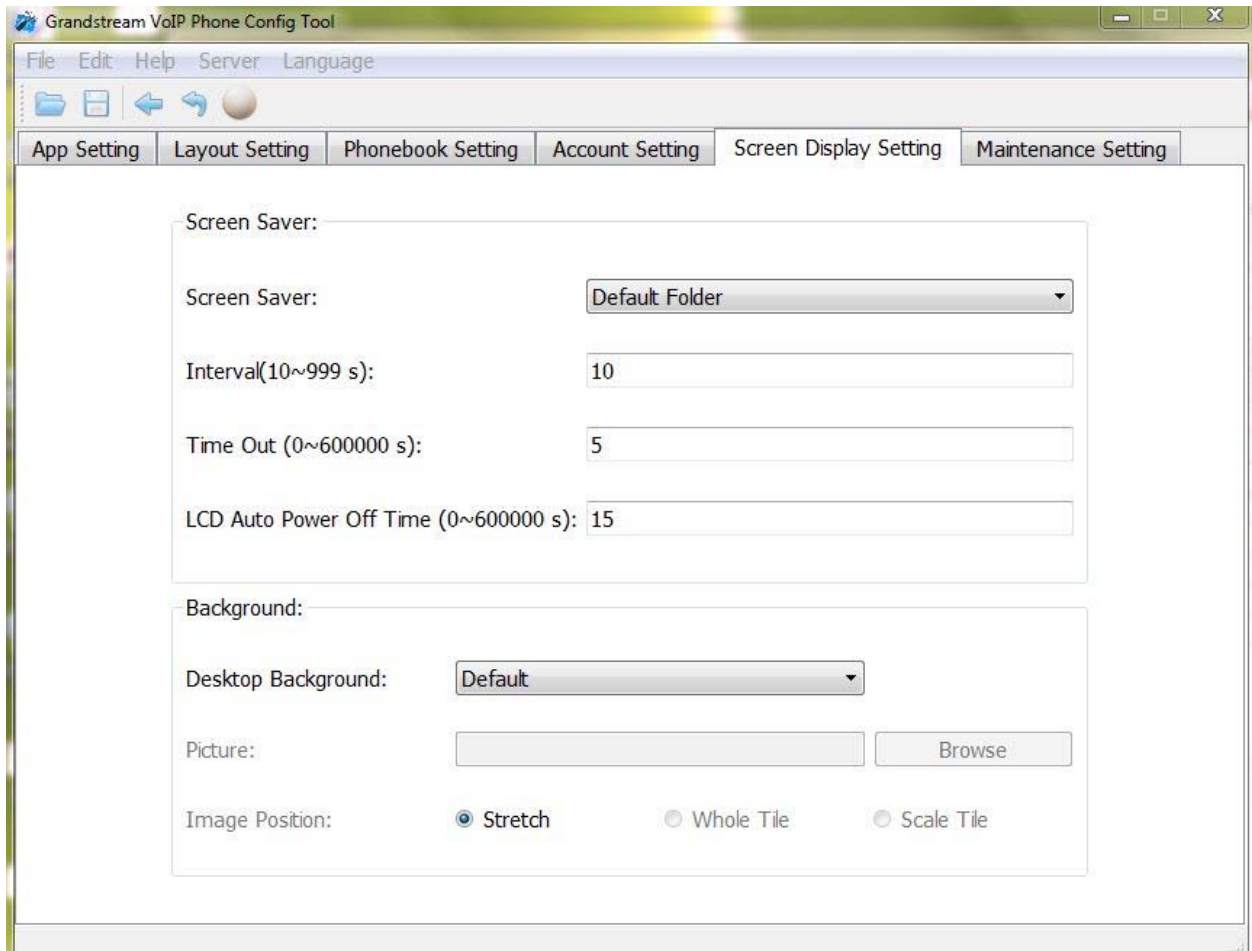
The following figure shows the "Account Setting" section on the Config Tool. Users could enter the account information here to register the account on GXV3140.



**Figure 4: Account Setting Interface**

## SCREEN DISPLAY SETTING

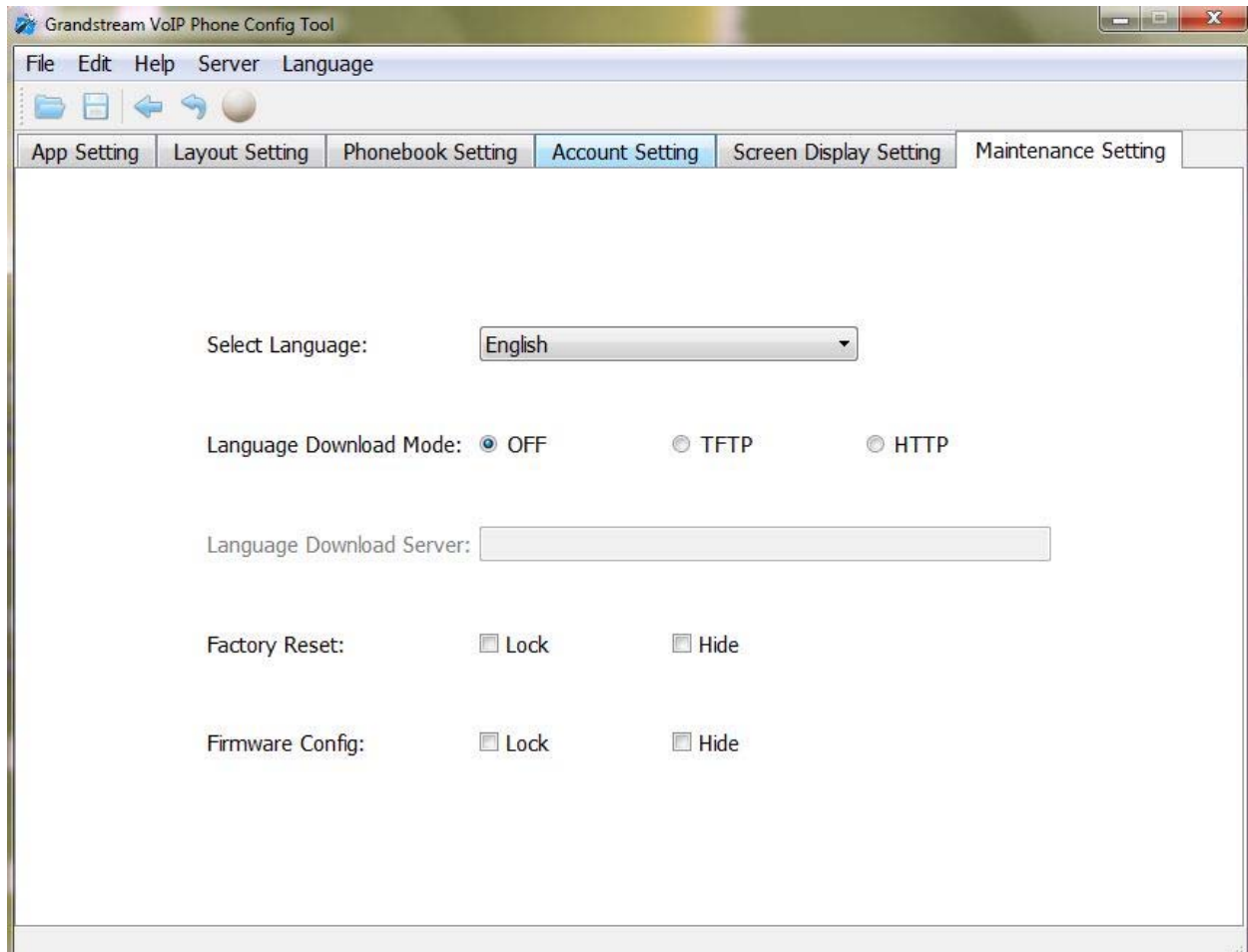
The following figure shows the "Screen Display Setting" section on the Config Tool. Users could customize the screen saver and background image on the idle screens for GXV3140.



**Figure 5: Screen Display Setting Interface**

## MAINTENANCE SETTING

The following figure shows the "Maintenance Setting" section on the Config Tool. Users could select display languages, configure upgrade server, and choose "Lock" or "Hide" "factory reset" and "Firmware Config" on the LCD.



**Figure 6: Maintenance Setting Interface**