



# Grandstream Networks, Inc.

---

## GXP2130/2140/2160 Enterprise IP Phone

### BLF Configuration User Guide



# GXP2130/2140/2160 BLF Configuration User Guide

## Index

<b>INTRODUCTION .....</b>	<b>4</b>
<b>OVERVIEW OF FUNCTIONS.....</b>	<b>5</b>
CONFIGURATION VIA WEB BROWSER .....	5
BLF KEYS CONFIGURATIONS .....	6
VISUAL INDICATORS .....	9
DIRECTED CALL PICKUP .....	10

**Table of Tables**  
**GXP2130/2140/2160 BLF Configuration User Guide**

Table 1: Default Passwords for Login Page ..... 6

Table 2: The BLF Indicators Status in Different Scenarios..... 10

**Table of Figures**  
**GXP2130/2140/2160 BLF Configuration User Guide**

Figure 1: Programmable Keys Settings .....	6
Figure 2: Configure Multi-Purpose Keys .....	7
Figure 3: Select Associated Account.....	8
Figure 4: Add Description.....	8
Figure 5: Add Extension Value .....	9
Figure 6: Save and Apply .....	9

## INTRODUCTION

Busy Lamp Field (BLF) feature allows an end user, such as attendant, to monitor the hook status of a list of users. GXP2130/GXP2160 supports Busy Lamp Field (BLF) on the Multi-Purpose Keys on the phone. GXP2140 is expandable with 1 to 4 expansion modules to support BLF feature. This document serves as an end user guide on how to configure Grandstream GXP2130/2140/2160 Enterprise IP phones for Busy Lamp Field feature.

To learn more about GXP2130/2140/2160's basic and advanced features, please visit link <http://www.grandstream.com/support> to download the latest "GXP2130/2140/2160 Administration Guide" and "GXP2130/2140/2160 User Guide".

## OVERVIEW OF FUNCTIONS

Grandstream GXP2130/2140/2160 Enterprise IP Phone supports Busy Lamp Filed (BLF) feature. GXP2130/2140/2160 supports this feature by changing the color and status of the MPK indicators, associated with the monitored users, on the mounted MPK extensions board or Programmable Keys on the phone body. GXP2130/2160 phones support this feature by changing the LED keys color and status on the MPKs on phone body, GXP2140 is expandable with 1 to 4 expansion modules to support BLF feature. Additional, the phone system is also able to pick up the calls to the monitored extensions.

## CONFIGURATION VIA WEB BROWSER

GXP2130/2140/2160 embedded Web server responds to HTTP/HTTPS GET/POST requests. Embedded HTML pages allow a user to configure the IP phone through a Web browser such as Google Chrome, Mozilla Firefox and Microsoft's IE.

To access the Web GUI:

1. Connect the computer to the same network as the phone;
2. Make sure the phone is turned on and shows its IP address. You may check the IP address by pressing Up arrow button when phone is at idle state;
3. Open a Web browser on your computer;
4. Enter the phone's IP address in the address bar of the browser;
5. Enter the administrator's login and password to access the Web Configuration Menu

Note:

- The computer has to be connected to the same sub-network as the phone. This can be easily done by connecting the computer to the same hub or switch as the phone connected to. In absence of a hub/switch (or free ports on the hub/switch), please connect the computer directly to the PC port on the back of the phone;
- If the phone is properly connected to a working Internet connection, the IP address of the phone will display in MENU->Status->Network Status. This address has the format: xxx.xxx.xxx.xxx, where xxx stands for a number from 0-255. Users will need this number to access the Web GUI. For example, if the phone has IP address 192.168.40.154, please enter "http://192.168.40.154" in the address bar of the browser;
- There are two default passwords for the login page:

Table 1: Default Passwords for Login Page

User Level	User	Password	Web Pages Allowed
End User Level	user	123	Only Status and Basic Settings
Administrator Level	admin	admin	Browse all pages

The password is case sensitive with maximum length of 25 characters.

- When changing any settings, always SUBMIT them by pressing the "Save" or "Save and Apply" button on the bottom of the page. If the change is saved only but not applied, after making all the changes, click on the "APPLY" button on top of the page to submit. After submitting the changes in all the Web GUI pages, reboot the phone to have the changes take effect if necessary (All the options under "Accounts" page and "Phonebook" page do not require reboot. Most of the options under "Settings" page do not require reboot).

## BLF KEYS CONFIGURATIONS

To configure the BLF feature on GXP2130/2140/2160 color phones:

- On the Web UI, click on "Settings";
- On the drop-down list, click on "Programmable Keys", as the figure shows below:

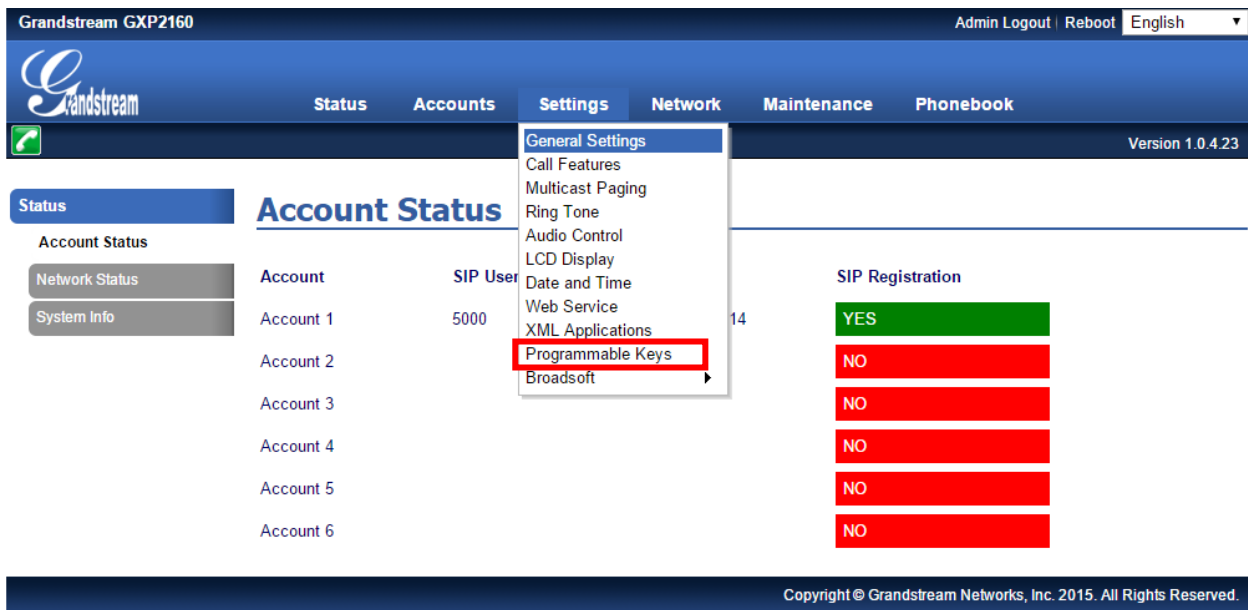


Figure 1: Programmable Keys Settings

- Go down to the “Multi-Purpose Keys” section of the page. Click on the dropdown menu of the key being set up. Scroll down and click on “Busy Lamp Field (BLF)”;

Version 1.0.4.23

SFTKEY 3    Default    Account 1    Description    Value

---

**Multi-Purpose Keys**

	Mode	Account	Description	Value
MPK 1	Busy Lamp Field (BLF)	Account 1	1003	1003
MPK 2	Busy Lamp Field (BLF)	Account 1	5001	5001
MPK 3	Speed Dial	Account 1	Description	Value
MPK 4	Busy Lamp Field (BLF)	Account 1	Description	Value
MPK 5	Presence Watcher	Account 1	Description	Value
MPK 6	Eventlist BLF	Account 1	Description	Value
MPK 7	Speed Dial via Active Account	Account 1	Description	Value
MPK 8	Dial DTMF	Account 1	Description	Value
MPK 9	Voice Mail	Account 1	Description	Value
MPK 10	Call Return	Account 1	Description	Value
MPK 11	Transfer	Account 1	Description	Value
MPK 12	Call Park	Account 1	Description	Value
MPK 13	Intercom	Account 1	Description	Value
MPK 14	LDAP Search	Account 1	Description	Value
MPK 15	Multicast Paging	Account 1	Description	Value
MPK 16	Record	Account 1	Description	Value
MPK 17	Speed Dial	Account 1	Description	Value
MPK 18	Speed Dial	Account 1	Description	Value
MPK 19	Speed Dial	Account 1	Description	Value

**Figure 2: Configure Multi-Purpose Keys**

- On the “Account” dropdown menu, select the account associated with the IP PBX that carries the extension being set up;



Version 1.0.4.23

SFTKEY 2	Default	Account 1	Description	Value
SFTKEY 3	Default	Account 1	Description	Value

**Multi-Purpose Keys**

	Mode	Account	Description	Value
MPK 1	Busy Lamp Field (BLF)	Account 1	1003	1003
MPK 2	Busy Lamp Field (BLF)	Account 1	5001	5001
MPK 3	Speed Dial	Account 1	Description	Value
MPK 4	Speed Dial	Account 2	Description	Value
MPK 5	Speed Dial	Account 3	Description	Value
MPK 6	Speed Dial	Account 4	Description	Value
MPK 7	Speed Dial	Account 5	Description	Value
MPK 8	Speed Dial	Account 6	Description	Value

**Figure 3: Select Associated Account**

- In the “Description” field, type the name of the individual or department that you want to associate with the extension being set up;

Version 1.0.4.23

SFTKEY 2	Default	Account 1	Description	Value
SFTKEY 3	Default	Account 1	Description	Value

**Multi-Purpose Keys**

	Mode	Account	Description	Value
MPK 1	Busy Lamp Field (BLF)	Account 1	1003	1003
MPK 2	Busy Lamp Field (BLF)	Account 1	James	5001
MPK 3	Speed Dial	Account 1	Description	Value
MPK 4	Speed Dial	Account 1	Description	Value

**Figure 4: Add Description**

- In the “Value” field, type the extension number for the extension being set up;

Version 1.0.4.23

SOFTKEY 2	Default	Account 1	Description	Value
SOFTKEY 3	Default	Account 1	Description	Value

Multi-Purpose Keys				
	Mode	Account	Description	Value
MPK 1	Busy Lamp Field (BLF)	Account 1	1003	1003
MPK 2	Busy Lamp Field (BLF)	Account 1	James	5001
MPK 3	Speed Dial	Account 1	Description	Value
MPK 4	Speed Dial	Account 1	Description	Value

Figure 5: Add Extension Value

7. Go to the bottom of the page, and click on “Save and Apply”.

MPK 23	Busy Lamp Field (BLF)	Account 1	Andy	1002
MPK 24	Busy Lamp Field (BLF)	Account 1	James	1000

Figure 6: Save and Apply

## VISUAL INDICATORS

The phone system is able to notify the end user the hook status of the monitored extension by changing the LED colors.

For example, if the monitored extension is ringing, the BLF indicator status will be changed from solid green to blinking red; and if the monitored extension answers the call, the BLF indicator status will be changed from blinking red to solid red.

The following table shows the BLF indicator status in different scenarios:

**Table 2: The BLF Indicators Status in Different Scenarios**

<b>Monitored Extension Behavior</b>	<b>BLF Indicator Status (LINE Keys/MPKs on Phone Body)</b>	<b>Extension Board Key Status (On Mounted Extension Board)</b>
Idle	Solid green	Solid green
Placing a call	Solid red	Solid red
Ringing	Blinking red	Blinking red
During a call	Solid red	Solid red
Hold the call	Solid red	Solid red
Monitored extension not registered/BLF subscription failed	Off	Off

## **DIRECTED CALL PICKUP**

Directed call pickup feature allows GXP2130/2140/2160 phone system to be able to answer the calls to the monitored users. This feature is very useful for the attendant to help the specified callees to answer the call if the callees are not available to answer it.

When the monitored user's indicator is blinking red, that means there is an incoming call on this monitored extension phone, GXP2130/2140/2160 phones user should tap the "Busy Lamp Field" MPK button to answer the call for the monitored user.